

## Product datasheet for **TA807649BM**

### G CSF (CSF3) Mouse Monoclonal Antibody (HRP conjugated) [Clone ID: OTI7B3]

#### Product data:

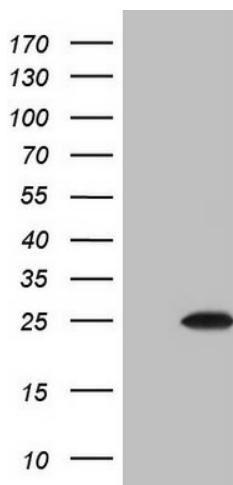
|                         |  |
|-------------------------|--|
| Product Type:           | Primary Antibodies   |
| Clone Name:             | OTI7B3   |
| Applications:           | WB   |
| Recommended Dilution:   | WB 1:2000  |
| Reactivity:             | Human  |
| Host:                   | Mouse  |
| Isotype:                | IgG1   |
| Clonality:              | Monoclonal   |
| Immunogen:              | Human recombinant protein fragment corresponding to amino acids 30-200 of human CSF3(NP_757374) produced in E.coli.  |
| Formulation:            | PBS (pH 7.3) containing 1% BSA, 50% glycerol.  |
| Concentration:          | 0.5 mg/ml  |
| Purification:           | Purified from mouse ascites fluids or tissue culture supernatant by affinity chromatography (protein A/G)  |
| Conjugation:            | HRP  |
| Storage:                | Store at -20°C as received.  |
| Stability:              | Stable for 12 months from date of receipt.   |
| Predicted Protein Size: | 21.4 kDa   |
| Gene Name:              | colony stimulating factor 3  |
| Database Link:          | <a href="#">NP_757374</a><br><a href="#">Entrez Gene 1440 Human</a><br><a href="#">P09919</a>  |
| Background:             | The protein encoded by this gene is a cytokine that controls the production, differentiation, and function of granulocytes. The active protein is found extracellularly. Alternatively spliced transcript variants have been described for this gene. [provided by RefSeq, May 2010] |
| Synonyms:               | C17orf33; CSF3OS; GCSF   |
| Protein Families:       | Druggable Genome, ES Cell Differentiation/IPS, Secreted Protein  |



[View online »](#)

**Protein Pathways:** Cytokine-cytokine receptor interaction, Hematopoietic cell lineage, Jak-STAT signaling pathway

**Product images:**



HEK293T cells were transfected with the pCMV6-ENTRY control (Left lane) or pCMV6-ENTRY CSF3 ([RC207709], Right lane) cDNA for 48 hrs and lysed. Equivalent amounts of cell lysates (5 ug per lane) were separated by SDS-PAGE and immunoblotted with anti-CSF3. Positive lysates [LY403533] (100ug) and [LC403533] (20ug) can be purchased separately from OriGene.