

## Product datasheet for **TA807641BM**

### PDGF Receptor alpha (PDGFRA) Mouse Monoclonal Antibody (HRP conjugated) [Clone ID: OTI1H10]

#### Product data:

Product Type:	Primary Antibodies
Clone Name:	OTI1H10
Applications:	WB
Recommended Dilution:	WB 1:2000
Reactivity:	Human, Mouse, Rat
Host:	Mouse
Isotype:	IgG2a
Clonality:	Monoclonal
Immunogen:	Human recombinant protein fragment corresponding to amino acids 789-1089 of human PDGFRA(NP_006197) produced in E.coli.
Formulation:	PBS (pH 7.3) containing 1% BSA, 50% glycerol.
Concentration:	0.5 mg/ml
Purification:	Purified from mouse ascites fluids or tissue culture supernatant by affinity chromatography (protein A/G)
Conjugation:	HRP
Storage:	Store at -20°C as received.
Stability:	Stable for 12 months from date of receipt.
Predicted Protein Size:	120.3 kDa
Gene Name:	platelet derived growth factor receptor alpha
Database Link:	<a href="#">NP_006197</a> <a href="#">Entrez Gene 18595 Mouse</a> <a href="#">Entrez Gene 25267 Rat</a> <a href="#">Entrez Gene 5156 Human</a> <a href="#">P16234</a>



[View online »](#)

**Background:**

This gene encodes a cell surface tyrosine kinase receptor for members of the platelet-derived growth factor family. These growth factors are mitogens for cells of mesenchymal origin. The identity of the growth factor bound to a receptor monomer determines whether the functional receptor is a homodimer or a heterodimer, composed of both platelet-derived growth factor receptor alpha and beta polypeptides. Studies suggest that this gene plays a role in organ development, wound healing, and tumor progression. Mutations in this gene have been associated with idiopathic hypereosinophilic syndrome, somatic and familial gastrointestinal stromal tumors, and a variety of other cancers. [provided by RefSeq, Mar 2012]

**Synonyms:**

CD140A; PDGFR-2; PDGFR2; RHEPDGFRA

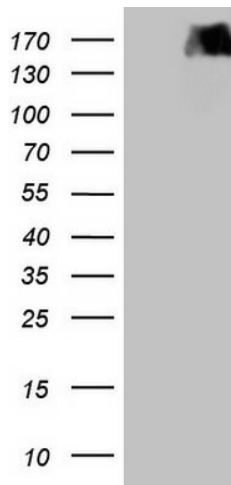
**Protein Families:**

Druggable Genome, ES Cell Differentiation/IPS, Protein Kinase, Transmembrane

**Protein Pathways:**

Calcium signaling pathway, Colorectal cancer, Cytokine-cytokine receptor interaction, Endocytosis, Focal adhesion, Gap junction, Glioma, MAPK signaling pathway, Melanoma, Pathways in cancer, Prostate cancer, Regulation of actin cytoskeleton

**Product images:**



HEK293T cells were transfected with the pCMV6-ENTRY control (Left lane) or pCMV6-ENTRY PDGFRA ([RC211740], Right lane) cDNA for 48 hrs and lysed. Equivalent amounts of cell lysates (5 ug per lane) were separated by SDS-PAGE and immunoblotted with anti-PDGFRα (1:2000). Positive lysates [LY416803] (100ug) and [LC416803] (20ug) can be purchased separately from OriGene.