

Product datasheet for **TA807637AM**

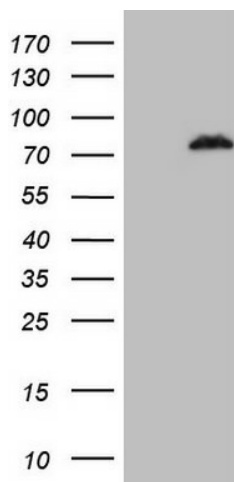
POLA2 Mouse Monoclonal Antibody (Biotin conjugated) [Clone ID: OTI3G7]

Product data:

Product Type:	Primary Antibodies
Clone Name:	OTI3G7
Applications:	WB
Recommended Dilution:	WB 1:2000
Reactivity:	Human
Host:	Mouse
Isotype:	IgG1
Clonality:	Monoclonal
Immunogen:	Human recombinant protein fragment corresponding to amino acids 1-284 of human POLA2(NP_002680) produced in E.coli.
Formulation:	PBS (pH 7.3) containing 1% BSA, 50% glycerol and 0.02% sodium azide.
Concentration:	0.5 mg/ml
Purification:	Purified from mouse ascites fluids or tissue culture supernatant by affinity chromatography (protein A/G)
Conjugation:	Biotin
Storage:	Store at -20°C as received.
Stability:	Stable for 12 months from date of receipt.
Predicted Protein Size:	65.8 kDa
Gene Name:	polymerase (DNA) alpha 2, accessory subunit
Database Link:	NP_002680 Entrez Gene 23649 Human Q14181
Synonyms:	FLJ21662; FLJ37250
Protein Pathways:	DNA replication, Metabolic pathways, Purine metabolism, Pyrimidine metabolism



[View online »](#)

Product images:

HEK293T cells were transfected with the pCMV6-ENTRY control (Left lane) or pCMV6-ENTRY POLA2 ([RC201145], Right lane) cDNA for 48 hrs and lysed. Equivalent amounts of cell lysates (5 ug per lane) were separated by SDS-PAGE and immunoblotted with anti-POLA2 (1:2000). Positive lysates [LY419168] (100ug) and [LC419168] (20ug) can be purchased separately from OriGene.