

Product datasheet for **TA807630S**

ATF1 Mouse Monoclonal Antibody [Clone ID: OTI2B4]

Product data:

Product Type:	Primary Antibodies
Clone Name:	OTI2B4
Applications:	IHC, WB
Recommended Dilution:	WB 1:2000, IHC 1:150
Reactivity:	Human, Mouse, Rat
Host:	Mouse
Isotype:	IgG2b
Clonality:	Monoclonal
Immunogen:	Full length human recombinant protein of human ATF1(NP_005162) produced in E.coli.
Formulation:	PBS (pH 7.3) containing 1% BSA, 50% glycerol and 0.02% sodium azide.
Concentration:	1 mg/ml
Purification:	Purified from mouse ascites fluids or tissue culture supernatant by affinity chromatography (protein A/G)
Conjugation:	Unconjugated
Storage:	Store at -20°C as received.
Stability:	Stable for 12 months from date of receipt.
Predicted Protein Size:	29.1 kDa
Gene Name:	activating transcription factor 1
Database Link:	NP_005162 Entrez Gene 11908 Mouse Entrez Gene 315305 Rat Entrez Gene 466 Human P18846



[View online »](#)

Background:

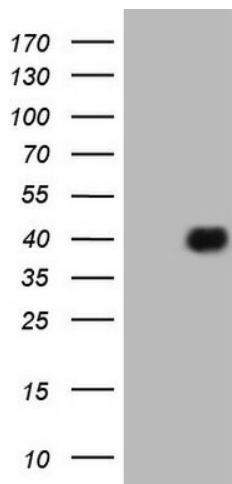
This gene encodes an activating transcription factor, which belongs to the ATF subfamily and bZIP (basic-region leucine zipper) family. It influences cellular physiologic processes by regulating the expression of downstream target genes, which are related to growth, survival, and other cellular activities. This protein is phosphorylated at serine 63 in its kinase-inducible domain by serine/threonine kinases, cAMP-dependent protein kinase A, calmodulin-dependent protein kinase I/II, mitogen- and stress-activated protein kinase and cyclin-dependent kinase 3 (cdk-3). Its phosphorylation enhances its transactivation and transcriptional activities, and enhances cell transformation. Fusion of this gene and FUS on chromosome 16 or EWSR1 on chromosome 22 induced by translocation generates chimeric proteins in angiomatoid fibrous histiocytoma and clear cell sarcoma. This gene has a pseudogene on chromosome 6. [provided by RefSeq, Aug 2010]

Synonyms:

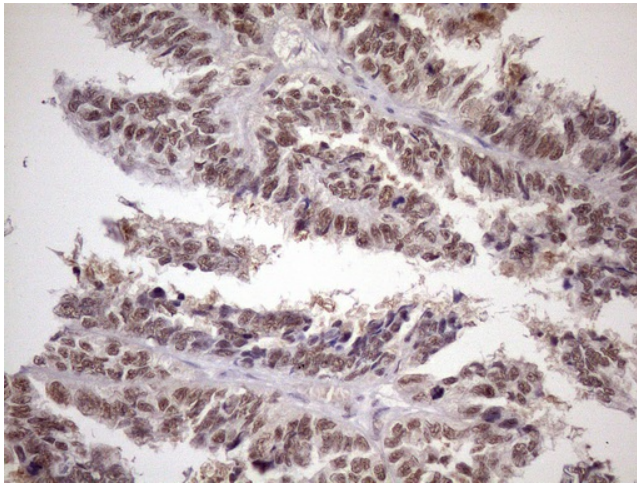
EWS-ATF1; FUS/ATF-1; TREB36

Protein Families:

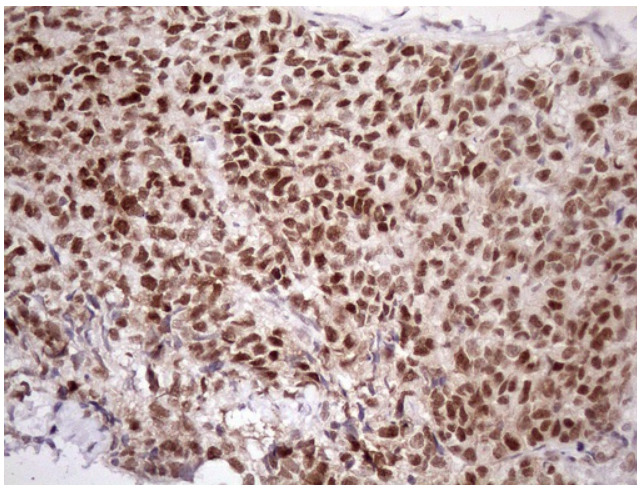
Druggable Genome, Transcription Factors

Product images:

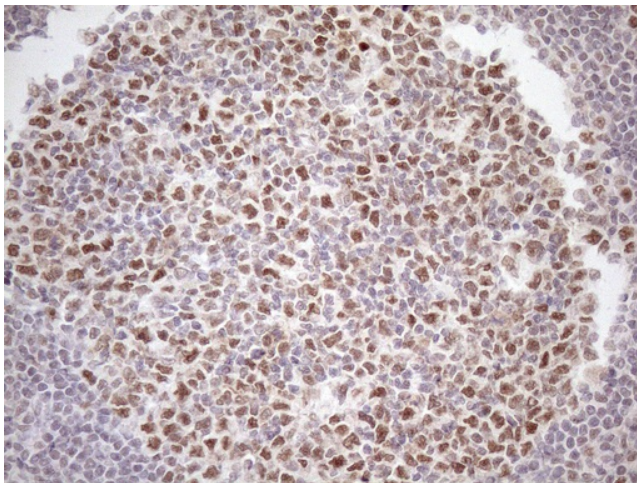
HEK293T cells were transfected with the pCMV6-ENTRY control (Cat# [PS100001], Left lane) or pCMV6-ENTRY ATF1 (Cat# [RC205923], Right lane) cDNA for 48 hrs and lysed. Equivalent amounts of cell lysates (5 ug per lane) were separated by SDS-PAGE and immunoblotted with anti-ATF1 (Cat# [TA807630])(1:2000). Positive lysates [LY401582] (100ug) and [LC401582] (20ug) can be purchased separately from OriGene.



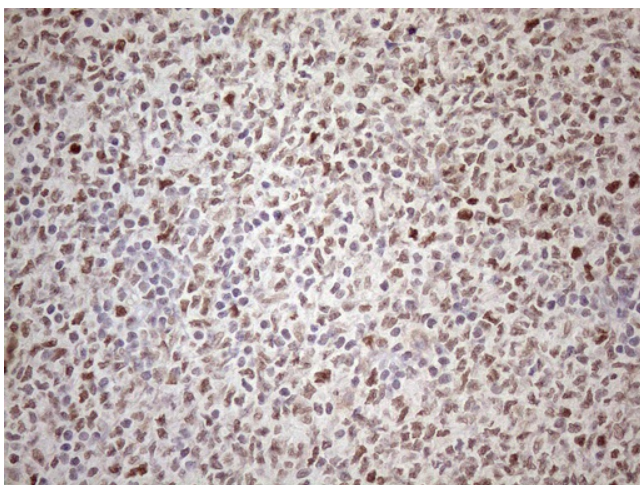
Immunohistochemical staining of paraffin-embedded Adenocarcinoma of Human ovary tissue using anti-ATF1 mouse monoclonal antibody. (Heat-induced epitope retrieval by 1mM EDTA in 10mM Tris buffer (pH8.5) at 120°C for 3min, [TA807630]) (1:150)



Immunohistochemical staining of paraffin-embedded Adenocarcinoma of Human endometrium tissue using anti-ATF1 mouse monoclonal antibody. (Heat-induced epitope retrieval by 1mM EDTA in 10mM Tris buffer (pH8.5) at 120°C for 3min, [TA807630]) (1:150)



Immunohistochemical staining of paraffin-embedded Human lymph node tissue within the normal limits using anti-ATF1 mouse monoclonal antibody. (Heat-induced epitope retrieval by 1mM EDTA in 10mM Tris buffer (pH8.5) at 120°C for 3min, [TA807630]) (1:150)



Immunohistochemical staining of paraffin-embedded Human lymphoma tissue using anti-ATF1 mouse monoclonal antibody. (Heat-induced epitope retrieval by 1mM EDTA in 10mM Tris buffer (pH8.5) at 120°C for 3min, [TA807630]) (1:150)