

## Product datasheet for **TA807618AM**

### **IKBKE Mouse Monoclonal Antibody (Biotin conjugated) [Clone ID: OTI5D4]**

#### **Product data:**

Product Type:	Primary Antibodies
Clone Name:	OTI5D4
Applications:	IHC, WB
Recommended Dilution:	WB 1:500, IHC 1:150
Reactivity:	Human
Host:	Mouse
Isotype:	IgG1
Clonality:	Monoclonal
Immunogen:	Human recombinant protein fragment corresponding to amino acids 474-716 of human IKBKE(NP_054721) produced in E.coli.
Formulation:	PBS (pH 7.3) containing 1% BSA, 50% glycerol and 0.02% sodium azide.
Concentration:	0.5 mg/ml
Purification:	Purified from mouse ascites fluids or tissue culture supernatant by affinity chromatography (protein A/G)
Conjugation:	Biotin
Storage:	Store at -20°C as received.
Stability:	Stable for 12 months from date of receipt.
Predicted Protein Size:	80.3 kDa
Gene Name:	inhibitor of kappa light polypeptide gene enhancer in B-cells, kinase epsilon
Database Link:	<a href="#">NP_054721</a> <a href="#">Entrez Gene 9641 Human</a> <a href="#">Q14164</a>



[View online »](#)

**Background:**

IKBKE is a noncanonical I-kappa-B (see MIM 164008) kinase (IKK) that is essential for regulating antiviral signaling pathways. IKBKE has also been identified as a breast cancer (MIM 114480) oncogene and is amplified and overexpressed in over 30% of breast carcinomas and breast cancer cell lines (Hutti et al., 2009 [PubMed 19481526]). [supplied by OMIM, Oct 2009]. Transcript Variant: This variant (3) lacks an alternate segment which results in the use of a downstream start codon, compared to variant 1. The resulting protein (isoform 3) is shorter when it is compared to isoform 1. Publication Note: This RefSeq record includes a subset of the publications that are available for this gene. Please see the Gene record to access additional publications. ##Evidence-Data-START## Transcript exon combination :: BC107812.1 [ECO:0000332] RNAseq introns :: mixed/partial sample support ERS025081, ERS025082 [ECO:0000350] ##Evidence-Data-END##

**Synonyms:**

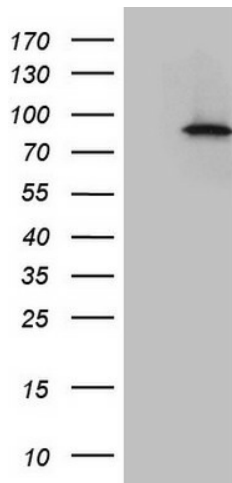
IKK-E; IKK-i; IKKE; IKKI

**Protein Families:**

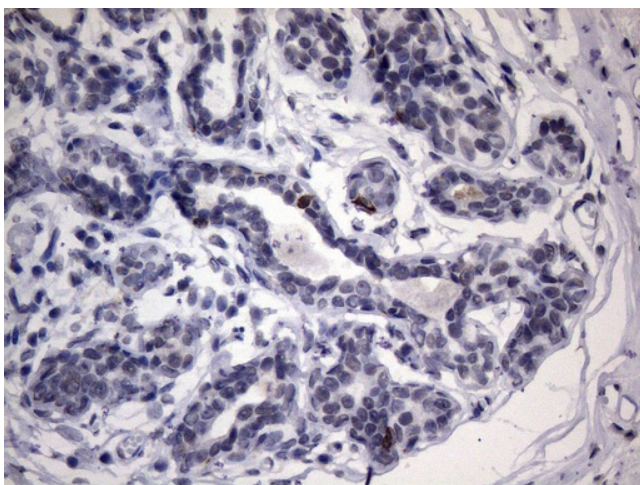
Druggable Genome, Protein Kinase

**Protein Pathways:**

Cytosolic DNA-sensing pathway, RIG-I-like receptor signaling pathway, Toll-like receptor signaling pathway

**Product images:**

HEK293T cells were transfected with the pCMV6-ENTRY control (Left lane) or pCMV6-ENTRY IKBKE ([RC212481], Right lane) cDNA for 48 hrs and lysed. Equivalent amounts of cell lysates (5 ug per lane) were separated by SDS-PAGE and immunoblotted with anti-IKBKE (1:500). Positive lysates [LY415533] (100ug) and [LC415533] (20ug) can be purchased separately from OriGene.



Immunohistochemical staining of paraffin-embedded Human breast tissue within the normal limits using anti-*IKBKE* mouse monoclonal antibody. (Heat-induced epitope retrieval by 1mM EDTA in 10mM Tris buffer (pH8.5) at 120°C for 3min, [TA807618]) (1:150)