

Product datasheet for **TA807617**

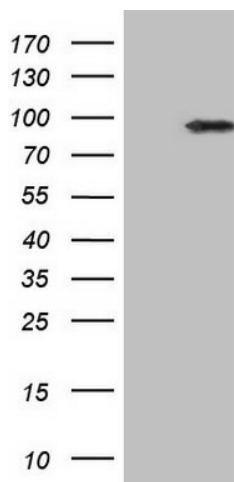
IKBKE Mouse Monoclonal Antibody [Clone ID: OTI4F9]

Product data:

| | |
|--------------------------------|---|
| Product Type: | Primary Antibodies |
| Clone Name: | OTI4F9 |
| Applications: | WB |
| Recommended Dilution: | WB 1:2000 |
| Reactivity: | Human |
| Host: | Mouse |
| Isotype: | IgG2a |
| Clonality: | Monoclonal |
| Immunogen: | Human recombinant protein fragment corresponding to amino acids 474-716 of human IKBKE(NP_054721) produced in E.coli. |
| Formulation: | PBS (pH 7.3) containing 1% BSA, 50% glycerol and 0.02% sodium azide. |
| Concentration: | 1 mg/ml |
| Purification: | Purified from mouse ascites fluids or tissue culture supernatant by affinity chromatography (protein A/G) |
| Conjugation: | Unconjugated |
| Storage: | Store at -20°C as received. |
| Stability: | Stable for 12 months from date of receipt. |
| Predicted Protein Size: | 80.3 kDa |
| Gene Name: | inhibitor of kappa light polypeptide gene enhancer in B-cells, kinase epsilon |
| Database Link: | NP_054721 Entrez Gene 9641 Human Q14164 |
| Synonyms: | IKK-E; IKK-i; IKKE; IKKI |
| Protein Families: | Druggable Genome, Protein Kinase |
| Protein Pathways: | Cytosolic DNA-sensing pathway, RIG-I-like receptor signaling pathway, Toll-like receptor signaling pathway |



[View online »](#)

Product images:

HEK293T cells were transfected with the pCMV6-ENTRY control (Left lane) or pCMV6-ENTRY IKBKE ([RC212481], Right lane) cDNA for 48 hrs and lysed. Equivalent amounts of cell lysates (5 ug per lane) were separated by SDS-PAGE and immunoblotted with anti-*IKBKE* (1:2000). Positive lysates [LY415533] (100ug) and [LC415533] (20ug) can be purchased separately from OriGene.