

Product datasheet for **TA807612M**

TRIB3 Mouse Monoclonal Antibody [Clone ID: OTI3F3]

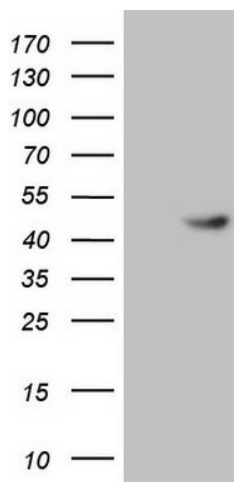
Product data:

Product Type:	Primary Antibodies
Clone Name:	OTI3F3
Applications:	IHC, WB
Recommended Dilution:	WB 1:2000, IHC 1:150
Reactivity:	Human
Host:	Mouse
Isotype:	IgG1
Clonality:	Monoclonal
Immunogen:	Human recombinant protein fragment corresponding to amino acids 1-200 of human TRIB3(NP_066981) produced in E.coli.
Formulation:	PBS (pH 7.3) containing 1% BSA, 50% glycerol and 0.02% sodium azide.
Concentration:	1 mg/ml
Purification:	Purified from mouse ascites fluids or tissue culture supernatant by affinity chromatography (protein A/G)
Conjugation:	Unconjugated
Storage:	Store at -20°C as received.
Stability:	Stable for 12 months from date of receipt.
Predicted Protein Size:	39.4 kDa
Gene Name:	tribbles pseudokinase 3
Database Link:	NP_066981 Entrez Gene 57761 Human Q96RU7
Synonyms:	C20orf97; NIPK; SINK; SKIP3; TRB3
Protein Families:	Druggable Genome, Protein Kinase, Transcription Factors

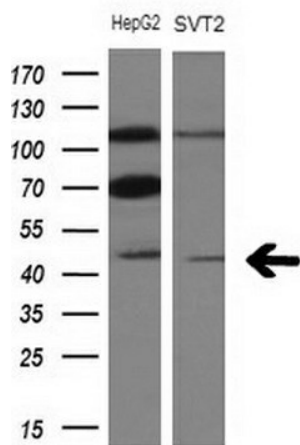


[View online »](#)

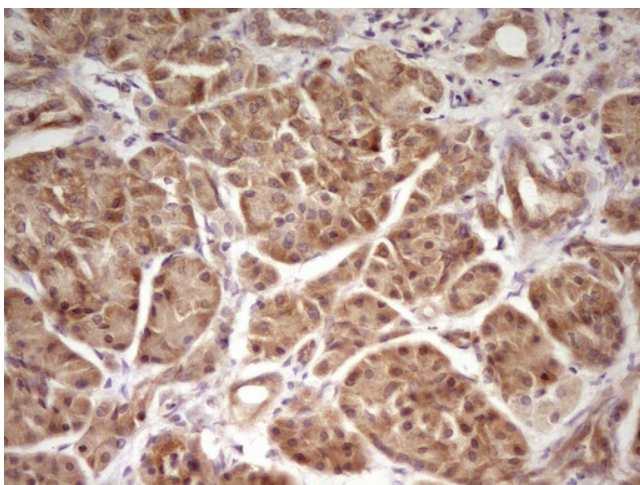
Product images:



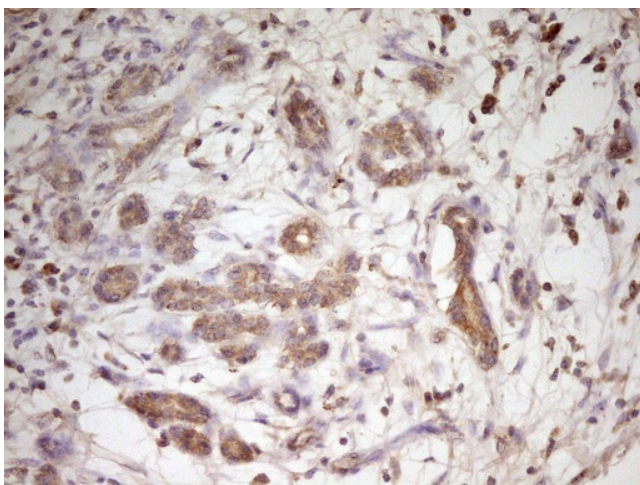
HEK293T cells were transfected with the pCMV6-ENTRY control (Left lane) or pCMV6-ENTRY TRIB3 ([RC206687], Right lane) cDNA for 48 hrs and lysed. Equivalent amounts of cell lysates (5 ug per lane) were separated by SDS-PAGE and immunoblotted with anti-TRIB3. Positive lysates [LY402848] (100ug) and [LC402848] (20ug) can be purchased separately from OriGene.



Western blot analysis of extracts (10ug) from 2 different cell lines by using anti-TRIB3 monoclonal antibody at 1:200 dilution.



Immunohistochemical staining of paraffin-embedded Human pancreas tissue within the normal limits using anti-TRIB3 mouse monoclonal antibody. Heat-induced epitope retrieval by EDTA solution buffer pH 8.0 at 120°C for 3 min.



Immunohistochemical staining of paraffin-embedded Carcinoma of Human pancreas tissue using anti-TRIB3 mouse monoclonal antibody. Heat-induced epitope retrieval by EDTA solution buffer pH 8.0 at 120°C for 3 min.