

Product datasheet for **TA807607S**

Pellino 1 (PELI1) Mouse Monoclonal Antibody [Clone ID: OTI3A9]

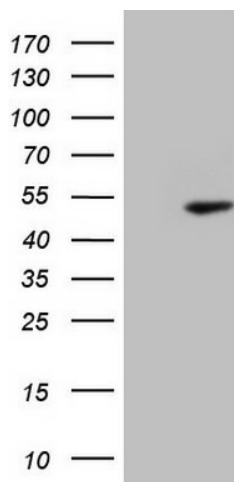
Product data:

Product Type:	Primary Antibodies
Clone Name:	OTI3A9
Applications:	WB
Recommended Dilution:	WB 1:2000
Reactivity:	Human, Mouse, Rat
Host:	Mouse
Isotype:	IgG1
Clonality:	Monoclonal
Immunogen:	Human recombinant protein fragment corresponding to amino acids 1-245 of human PELI1(NP_065702) produced in E.coli.
Formulation:	PBS (pH 7.3) containing 1% BSA, 50% glycerol and 0.02% sodium azide.
Concentration:	1 mg/ml
Purification:	Purified from mouse ascites fluids or tissue culture supernatant by affinity chromatography (protein A/G)
Conjugation:	Unconjugated
Storage:	Store at -20°C as received.
Stability:	Stable for 12 months from date of receipt.
Predicted Protein Size:	46.1 kDa
Gene Name:	pellino E3 ubiquitin protein ligase 1
Database Link:	NP_065702 Entrez Gene 67245 Mouse Entrez Gene 305549 Rat Entrez Gene 57162 Human Q96FA3
Synonyms:	DKFZp686C18116; MGC50990



[View online »](#)

Product images:



HEK293T cells were transfected with the pCMV6-ENTRY control (Left lane) or pCMV6-ENTRY PELI1 ([RC208197], Right lane) cDNA for 48 hrs and lysed. Equivalent amounts of cell lysates (5 ug per lane) were separated by SDS-PAGE and immunoblotted with anti-PELI1 (1:2000). Positive lysates [LY412313] (100ug) and [LC412313] (20ug) can be purchased separately from OriGene.