

Product datasheet for TA807603M

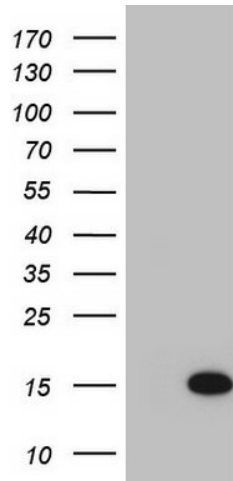
S100 calcium binding protein A14 (S100A14) Mouse Monoclonal Antibody [Clone ID: OTI2G9]

Product data:

Product Type:	Primary Antibodies
Clone Name:	OTI2G9
Applications:	WB
Recommended Dilution:	WB 1:2000
Reactivity:	Human, Mouse
Host:	Mouse
Isotype:	IgG1
Clonality:	Monoclonal
Immunogen:	Full length human recombinant protein of human S100A14 (NP_065723) produced in E.coli.
Formulation:	PBS (pH 7.3) containing 1% BSA, 50% glycerol and 0.02% sodium azide.
Concentration:	1 mg/ml
Purification:	Purified from mouse ascites fluids or tissue culture supernatant by affinity chromatography (protein A/G)
Conjugation:	Unconjugated
Storage:	Store at -20°C as received.
Stability:	Stable for 12 months from date of receipt.
Predicted Protein Size:	11.5 kDa
Gene Name:	S100 calcium binding protein A14
Database Link:	NP_065723 Entrez Gene 57402 Human Q9HCY8
Background:	This gene encodes a member of the S100 protein family which contains an EF-hand motif and binds calcium. The gene is located in a cluster of S100 genes on chromosome 1. Levels of the encoded protein have been found to be lower in cancerous tissue and associated with metastasis suggesting a tumor suppressor function (PMID: 19956863, 19351828). [provided by RefSeq, Dec 2011]
Synonyms:	BCMP84; S100A15


[View online »](#)

Product images:



HEK293T cells were transfected with the pCMV6-ENTRY control (Cat# [PS100001], Left lane) or pCMV6-ENTRY S100A14 (Cat# [RC202590], Right lane) cDNA for 48 hrs and lysed. Equivalent amounts of cell lysates (5 ug per lane) were separated by SDS-PAGE and immunoblotted with anti-S100A14 (Cat# [TA807603])(1:2000). Positive lysates [LY402803] (100ug) and [LC402803] (20ug) can be purchased separately from OriGene.