

Product datasheet for **TA807601AM**

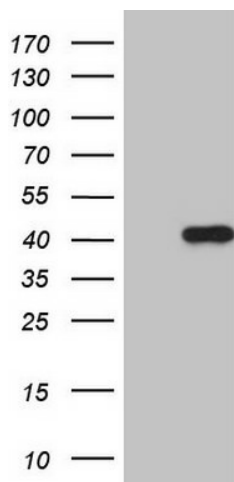
CDCA8 Mouse Monoclonal Antibody (Biotin conjugated) [Clone ID: OTI7G7]

Product data:

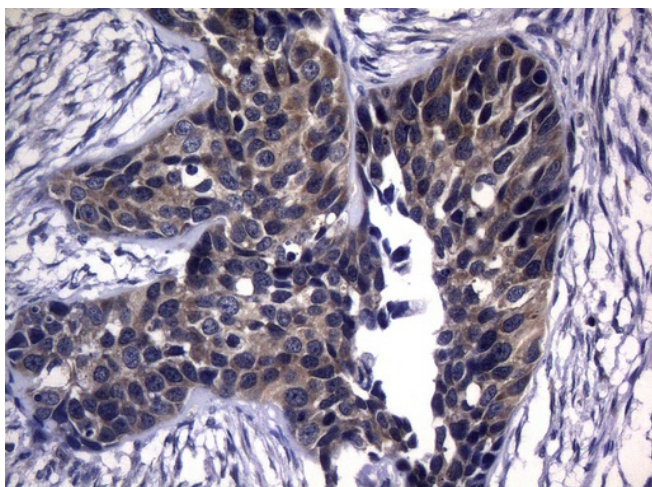
Product Type:	Primary Antibodies
Clone Name:	OTI7G7
Applications:	IHC, WB
Recommended Dilution:	WB 1:2000, IHC 1:150
Reactivity:	Human
Host:	Mouse
Isotype:	IgG2a
Clonality:	Monoclonal
Immunogen:	Full length human recombinant protein of human CDCA8 (NP_060571) produced in E.coli.
Formulation:	PBS (pH 7.3) containing 1% BSA, 50% glycerol and 0.02% sodium azide.
Concentration:	0.5 mg/ml
Purification:	Purified from mouse ascites fluids or tissue culture supernatant by affinity chromatography (protein A/G)
Conjugation:	Biotin
Storage:	Store at -20°C as received.
Stability:	Stable for 12 months from date of receipt.
Gene Name:	cell division cycle associated 8
Database Link:	NP_060571 Entrez Gene 55143 Human Q53HL2
Background:	This gene encodes a component of the chromosomal passenger complex. This complex is an essential regulator of mitosis and cell division. This protein is cell-cycle regulated and is required for chromatin-induced microtubule stabilization and spindle formation. Alternate splicing results in multiple transcript variants. Pseudogenes of this gene are found on chromosomes 7, 8 and 16. [provided by RefSeq, Apr 2013]
Synonyms:	BOR; BOREALIN; DasraB; MESRGP
Protein Families:	Druggable Genome



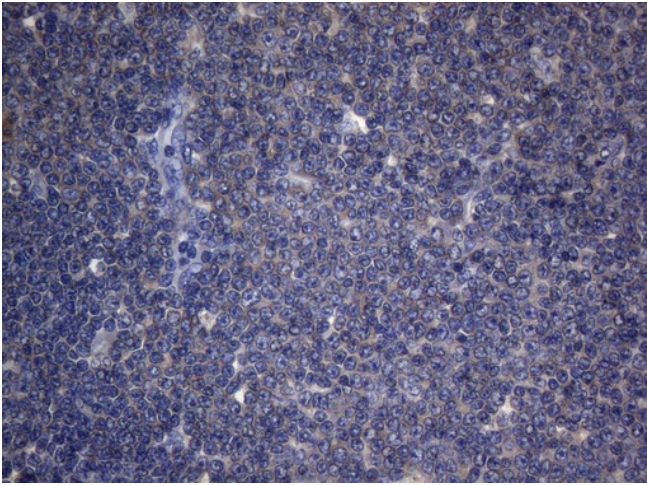
[View online »](#)

Product images:

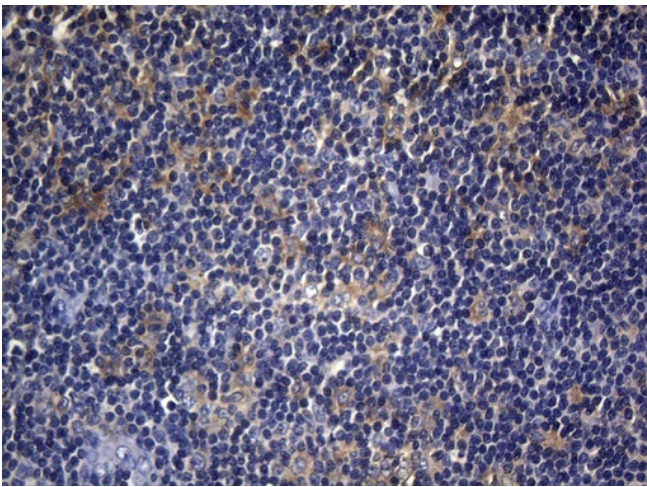
HEK293T cells were transfected with the pCMV6-ENTRY control (Left lane) or pCMV6-ENTRY CDCA8 ([RC201385], Right lane) cDNA for 48 hrs and lysed. Equivalent amounts of cell lysates (5 ug per lane) were separated by SDS-PAGE and immunoblotted with anti-CDCA8 (1:2000). Positive lysates [LY402655] (100ug) and [LC402655] (20ug) can be purchased separately from OriGene.



Immunohistochemical staining of paraffin-embedded Carcinoma of Human kidney tissue using anti-CDCA8 mouse monoclonal antibody. (Heat-induced epitope retrieval by 1mM EDTA in 10mM Tris buffer (pH8.5) at 120°C for 3min, [TA807601]) (1:150)



Immunohistochemical staining of paraffin-embedded Human lymphoma tissue using anti-CDCA8 mouse monoclonal antibody. (Heat-induced epitope retrieval by 1mM EDTA in 10mM Tris buffer (pH8.5) at 120°C for 3min, [TA807601]) (1:150)



Immunohistochemical staining of paraffin-embedded Human tonsil within the normal limits using anti-CDCA8 mouse monoclonal antibody. (Heat-induced epitope retrieval by 1mM EDTA in 10mM Tris buffer (pH8.5) at 120°C for 3min, [TA807601]) (1:150)