

## Product datasheet for **TA807599S**

### NDUFB11 Mouse Monoclonal Antibody [Clone ID: OTI9C5]

#### Product data:

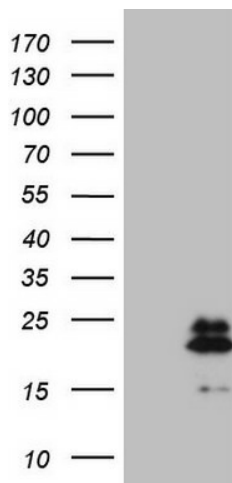
|                         |  |
|-------------------------|--|
| Product Type:           | Primary Antibodies   |
| Clone Name:             | OTI9C5   |
| Applications:           | IHC, WB  |
| Recommended Dilution:   | WB 1:2000, IHC 1:150   |
| Reactivity:             | Human  |
| Host:                   | Mouse  |
| Isotype:                | IgG1   |
| Clonality:              | Monoclonal   |
| Immunogen:              | Human recombinant protein fragment corresponding to amino acids 30-163 of human NDUFB11(NP_061929) produced in E.coli.   |
| Formulation:            | PBS (pH 7.3) containing 1% BSA, 50% glycerol and 0.02% sodium azide.   |
| Concentration:          | 1 mg/ml  |
| Purification:           | Purified from mouse ascites fluids or tissue culture supernatant by affinity chromatography (protein A/G)  |
| Conjugation:            | Unconjugated   |
| Storage:                | Store at -20°C as received.  |
| Stability:              | Stable for 12 months from date of receipt.   |
| Predicted Protein Size: | 18.2 kDa   |
| Gene Name:              | NADH:ubiquinone oxidoreductase subunit B11   |
| Database Link:          | <a href="#">NP_061929</a><br><a href="#">Entrez Gene 54539 Human</a><br><a href="#">Q9NX14</a>   |
| Background:             | NDUFB11 is a component of mitochondrial complex I. Complex I catalyzes the first step in the electron transport chain, the transfer of 2 electrons from NADH to ubiquinone, coupled to the translocation of 4 protons across the membrane (Carroll et al., 2002 [PubMed 12381726]). [supplied by OMIM, Feb 2009] |
| Synonyms:               | CI-ESSS; ESSH; Np15; NP17.3; P17.3   |



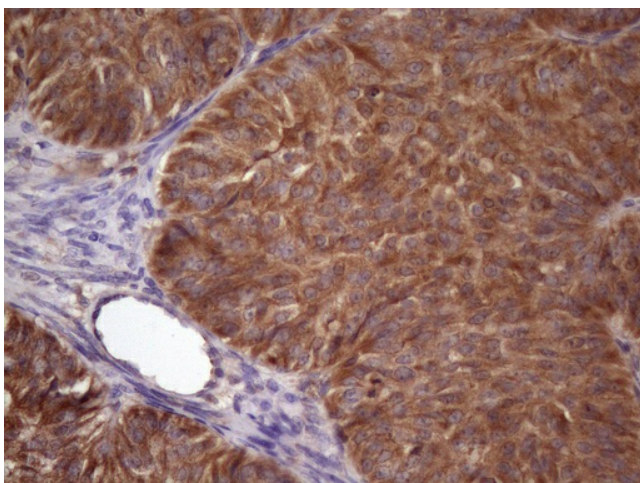
[View online »](#)

Protein Families: Transmembrane

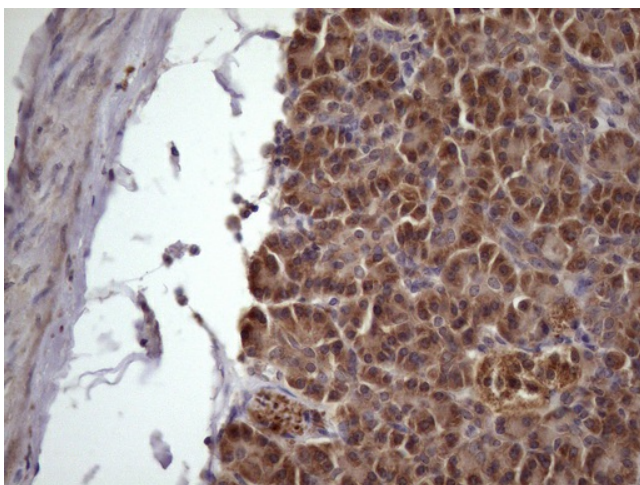
### Product images:



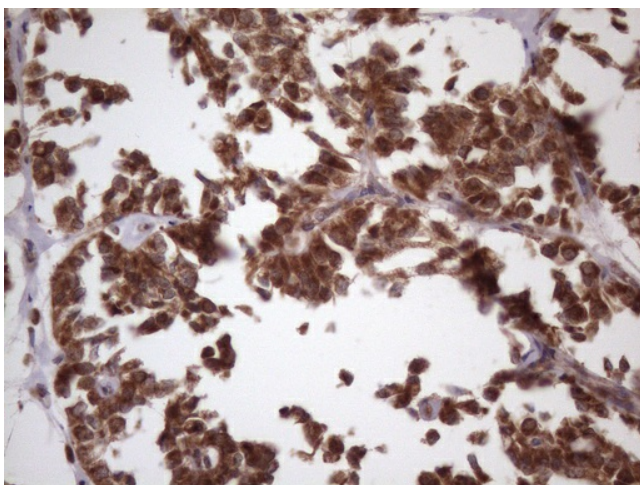
HEK293T cells were transfected with the pCMV6-ENTRY control (Cat# [PS100001], Left lane) or pCMV6-ENTRY NDUFB11 (Cat# [RC213937], Right lane) cDNA for 48 hrs and lysed. Equivalent amounts of cell lysates (5 ug per lane) were separated by SDS-PAGE and immunoblotted with anti-NDUFB11 (1:2000) (Cat# [TA807599]). Positive lysates [LY412795] (100ug) and [LC412795] (20ug) can be purchased separately from OriGene.



Immunohistochemical staining of paraffin-embedded Adenocarcinoma of Human ovary tissue using anti-NDUFB11 mouse monoclonal antibody. (Heat-induced epitope retrieval by 1mM EDTA in 10mM Tris, pH8.5, 120°C for 3min, [TA807599]) (1:150)



Immunohistochemical staining of paraffin-embedded Human pancreas tissue within the normal limits using anti-NDUFB11 mouse monoclonal antibody. (Heat-induced epitope retrieval by 1mM EDTA in 10mM Tris, pH8.5, 120°C for 3min, [TA807599]) (1:150)



Immunohistochemical staining of paraffin-embedded Carcinoma of Human pancreas tissue using anti-NDUFB11 mouse monoclonal antibody. (Heat-induced epitope retrieval by 1mM EDTA in 10mM Tris, pH8.5, 120°C for 3min, [TA807599]) (1:150)