

Product datasheet for **TA807599AM**

NDUFB11 Mouse Monoclonal Antibody (Biotin conjugated) [Clone ID: OTI9C5]

Product data:

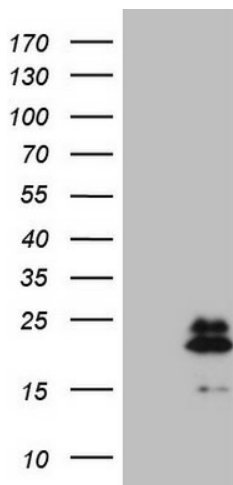
Product Type:	Primary Antibodies
Clone Name:	OTI9C5
Applications:	IHC, WB
Recommended Dilution:	WB 1:2000, IHC 1:150
Reactivity:	Human
Host:	Mouse
Isotype:	IgG1
Clonality:	Monoclonal
Immunogen:	Human recombinant protein fragment corresponding to amino acids 30-163 of human NDUFB11(NP_061929) produced in E.coli.
Formulation:	PBS (pH 7.3) containing 1% BSA, 50% glycerol and 0.02% sodium azide.
Concentration:	0.5 mg/ml
Purification:	Purified from mouse ascites fluids or tissue culture supernatant by affinity chromatography (protein A/G)
Conjugation:	Biotin
Storage:	Store at -20°C as received.
Stability:	Stable for 12 months from date of receipt.
Predicted Protein Size:	18.2 kDa
Gene Name:	NADH:ubiquinone oxidoreductase subunit B11
Database Link:	NP_061929 Entrez Gene 54539 Human Q9NX14
Background:	NDUFB11 is a component of mitochondrial complex I. Complex I catalyzes the first step in the electron transport chain, the transfer of 2 electrons from NADH to ubiquinone, coupled to the translocation of 4 protons across the membrane (Carroll et al., 2002 [PubMed 12381726]). [supplied by OMIM, Feb 2009]
Synonyms:	CI-ESSS; ESSH; Np15; NP17.3; P17.3



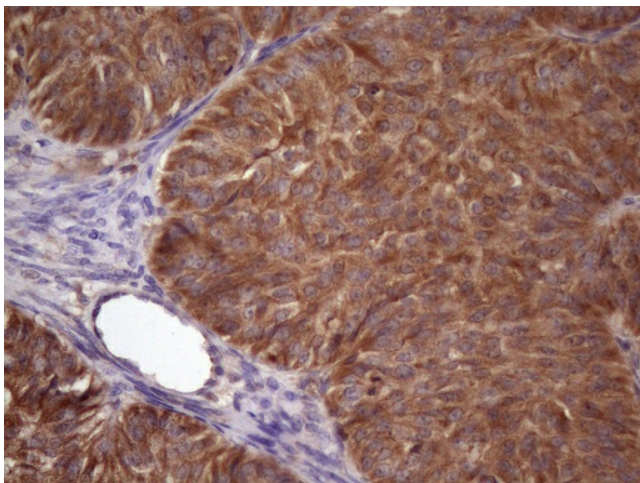
[View online »](#)

Protein Families: Transmembrane

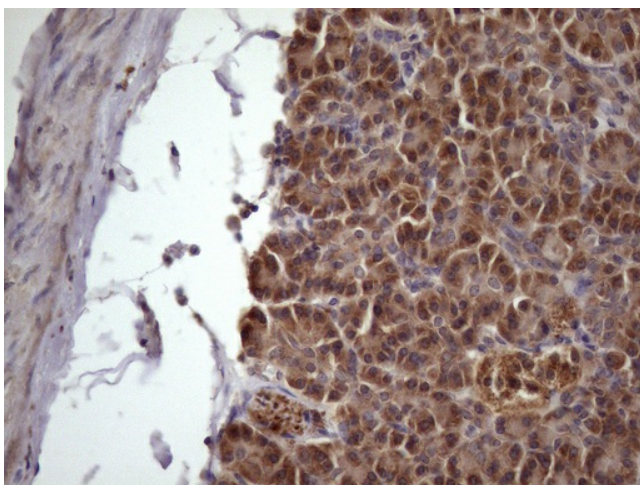
Product images:



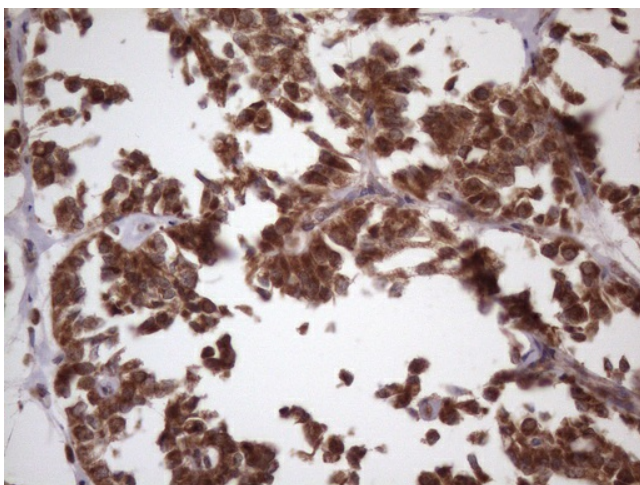
HEK293T cells were transfected with the pCMV6-ENTRY control (Cat# [PS100001], Left lane) or pCMV6-ENTRY NDUFB11 (Cat# [RC213937], Right lane) cDNA for 48 hrs and lysed. Equivalent amounts of cell lysates (5 ug per lane) were separated by SDS-PAGE and immunoblotted with anti-NDUFB11 (1:2000) (Cat# [TA807599]). Positive lysates [LY412795] (100ug) and [LC412795] (20ug) can be purchased separately from OriGene.



Immunohistochemical staining of paraffin-embedded Adenocarcinoma of Human ovary tissue using anti-NDUFB11 mouse monoclonal antibody. (Heat-induced epitope retrieval by 1mM EDTA in 10mM Tris, pH8.5, 120°C for 3min, [TA807599]) (1:150)



Immunohistochemical staining of paraffin-embedded Human pancreas tissue within the normal limits using anti-NDUFB11 mouse monoclonal antibody. (Heat-induced epitope retrieval by 1mM EDTA in 10mM Tris, pH8.5, 120°C for 3min, [TA807599]) (1:150)



Immunohistochemical staining of paraffin-embedded Carcinoma of Human pancreas tissue using anti-NDUFB11 mouse monoclonal antibody. (Heat-induced epitope retrieval by 1mM EDTA in 10mM Tris, pH8.5, 120°C for 3min, [TA807599]) (1:150)