

Product datasheet for **TA807596M**

NDUFB11 Mouse Monoclonal Antibody [Clone ID: OTI5B4]

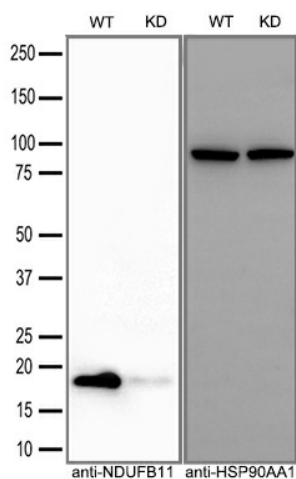
Product data:

Product Type:	Primary Antibodies
Clone Name:	OTI5B4
Applications:	WB
Recommended Dilution:	WB 1:2000
Reactivity:	Human
Host:	Mouse
Isotype:	IgG1
Clonality:	Monoclonal
Immunogen:	Human recombinant protein fragment corresponding to amino acids 30-163 of human NDUFB11(NP_061929) produced in E.coli.
Formulation:	PBS (pH 7.3) containing 1% BSA, 50% glycerol and 0.02% sodium azide.
Concentration:	1 mg/ml
Purification:	Purified from mouse ascites fluids or tissue culture supernatant by affinity chromatography (protein A/G)
Conjugation:	Unconjugated
Storage:	Store at -20°C as received.
Stability:	Stable for 12 months from date of receipt.
Predicted Protein Size:	18.2 kDa
Gene Name:	NADH:ubiquinone oxidoreductase subunit B11
Database Link:	NP_061929 Entrez Gene 54539 Human Q9NX14
Background:	NDUFB11 is a component of mitochondrial complex I. Complex I catalyzes the first step in the electron transport chain, the transfer of 2 electrons from NADH to ubiquinone, coupled to the translocation of 4 protons across the membrane (Carroll et al., 2002 [PubMed 12381726]). [supplied by OMIM, Feb 2009]
Synonyms:	CI-ESSS; ESSH; Np15; NP17.3; P17.3

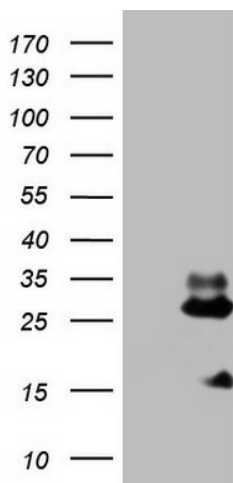
[View online »](#)

Protein Families: Transmembrane

Product images:



Equivalent amounts of cell lysates (30 ug per lane) of wild-type HeLa cells (WT) and NDUFB11-Knockdown HeLa cells (KD) were separated by SDS-PAGE and immunoblotted with anti-NDUFB11 monoclonal antibody [TA807596] (1:2500). Then the blotted membrane was stripped and reprobed with anti-HSP90AA1 antibody as a loading control.



HEK293T cells were transfected with the pCMV6-ENTRY control (Left lane) or pCMV6-ENTRY NDUFB11 ([RC213937], Right lane) cDNA for 48 hrs and lysed. Equivalent amounts of cell lysates (5 ug per lane) were separated by SDS-PAGE and immunoblotted with anti-NDUFB11. Positive lysates [LY412795] (100ug) and [LC412795] (20ug) can be purchased separately from OriGene.

