

Product datasheet for **TA807592S**

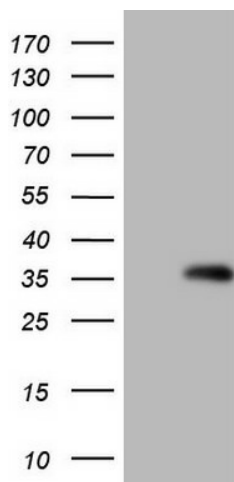
WDR61 Mouse Monoclonal Antibody [Clone ID: OTI4D2]

Product data:

Product Type:	Primary Antibodies
Clone Name:	OTI4D2
Applications:	WB
Recommended Dilution:	WB 1:2000
Reactivity:	Human, Mouse, Rat
Host:	Mouse
Isotype:	IgG1
Clonality:	Monoclonal
Immunogen:	Human recombinant protein fragment corresponding to amino acids 92-305 of human WDR61(NP_079510) produced in E.coli.
Formulation:	PBS (pH 7.3) containing 1% BSA, 50% glycerol and 0.02% sodium azide.
Concentration:	1 mg/ml
Purification:	Purified from mouse ascites fluids or tissue culture supernatant by affinity chromatography (protein A/G)
Conjugation:	Unconjugated
Storage:	Store at -20°C as received.
Stability:	Stable for 12 months from date of receipt.
Predicted Protein Size:	33.4 kDa
Gene Name:	WD repeat domain 61
Database Link:	NP_079510 Entrez Gene 66317 Mouse Entrez Gene 363064 Rat Entrez Gene 80349 Human Q9GZS3
Background:	WDR61 is a subunit of the human PAF and SKI complexes, which function in transcriptional regulation and are involved in events downstream of RNA synthesis, such as RNA surveillance (Zhu et al., 2005 [PubMed 16024656]). [supplied by OMIM, Mar 2008]
Synonyms:	REC14; SKI8
Protein Pathways:	RNA degradation



[View online »](#)

Product images:

HEK293T cells were transfected with the pCMV6-ENTRY control (Left lane) or pCMV6-ENTRY WDR61 ([RC203963], Right lane) cDNA for 48 hrs and lysed. Equivalent amounts of cell lysates (5 ug per lane) were separated by SDS-PAGE and immunoblotted with anti-WDR61. Positive lysates [LY410745] (100ug) and [LC410745] (20ug) can be purchased separately from OriGene.