

Product datasheet for **TA807585BM**

Islet 1 (ISL1) Mouse Monoclonal Antibody (HRP conjugated) [Clone ID: OTI2D8]

Product data:

Product Type:	Primary Antibodies
Clone Name:	OTI2D8
Applications:	WB
Recommended Dilution:	WB 1:500
Reactivity:	Human, Mouse, Rat
Host:	Mouse
Isotype:	IgG1
Clonality:	Monoclonal
Immunogen:	Human recombinant protein fragment corresponding to amino acids 134-349 of human ISL1(NP_002193) produced in E.coli.
Formulation:	PBS (pH 7.3) containing 1% BSA, 50% glycerol.
Concentration:	0.5 mg/ml
Purification:	Purified from mouse ascites fluids or tissue culture supernatant by affinity chromatography (protein A/G)
Conjugation:	HRP
Storage:	Store at -20°C as received.
Stability:	Stable for 12 months from date of receipt.
Predicted Protein Size:	38.9 kDa
Gene Name:	ISL LIM homeobox 1
Database Link:	NP_002193 Entrez Gene 16392 Mouse Entrez Gene 64444 Rat Entrez Gene 3670 Human P61371
Background:	This gene encodes a member of the LIM/homeodomain family of transcription factors. The encoded protein binds to the enhancer region of the insulin gene, among others, and may play an important role in regulating insulin gene expression. The encoded protein is central to the development of pancreatic cell lineages and may also be required for motor neuron generation. Mutations in this gene have been associated with maturity-onset diabetes of the young. [provided by RefSeq, Jul 2008]

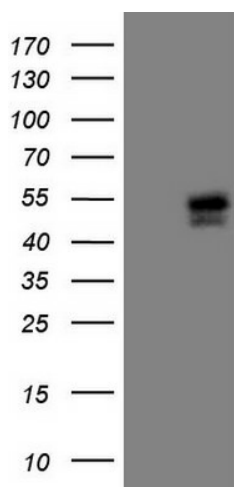


[View online »](#)

Synonyms: Isl-1; ISLET1

Protein Families: ES Cell Differentiation/IPS, Transcription Factors

Product images:



HEK293T cells were transfected with the pCMV6-ENTRY control (Cat# [PS100001], Left lane) or pCMV6-ENTRY ISL1 (Cat# [RC206893], Right lane) cDNA for 48 hrs and lysed. Equivalent amounts of cell lysates (5 ug per lane) were separated by SDS-PAGE and immunoblotted with anti-ISL1 (1:500) (Cat# [TA807585]). Positive lysates [LY400801] (100ug) and [LC400801] (20ug) can be purchased separately from OriGene.