

Product datasheet for **TA807581M**

Myosin (MYL4) Mouse Monoclonal Antibody [Clone ID: OTI2F6]

Product data:

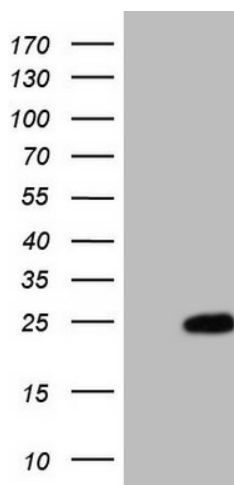
Product Type:	Primary Antibodies
Clone Name:	OTI2F6
Applications:	IHC, WB
Recommended Dilution:	WB 1:2000, IHC 1:150
Reactivity:	Human, Mouse, Rat
Host:	Mouse
Isotype:	IgG1
Clonality:	Monoclonal
Immunogen:	Human recombinant protein fragment corresponding to amino acids 2-197 of human MYL4(NP_002467) produced in E.coli.
Formulation:	PBS (pH 7.3) containing 1% BSA, 50% glycerol and 0.02% sodium azide.
Concentration:	1 mg/ml
Purification:	Purified from mouse ascites fluids or tissue culture supernatant by affinity chromatography (protein A/G)
Conjugation:	Unconjugated
Storage:	Store at -20°C as received.
Stability:	Stable for 12 months from date of receipt.
Predicted Protein Size:	21.4 kDa
Gene Name:	myosin light chain 4
Database Link:	NP_002467 Entrez Gene 4635 Human P12829
Background:	Myosin is a hexameric ATPase cellular motor protein. It is composed of two myosin heavy chains, two nonphosphorylatable myosin alkali light chains, and two phosphorylatable myosin regulatory light chains. This gene encodes a myosin alkali light chain that is found in embryonic muscle and adult atria. Two alternatively spliced transcript variants encoding the same protein have been found for this gene. [provided by RefSeq, Jul 2008]



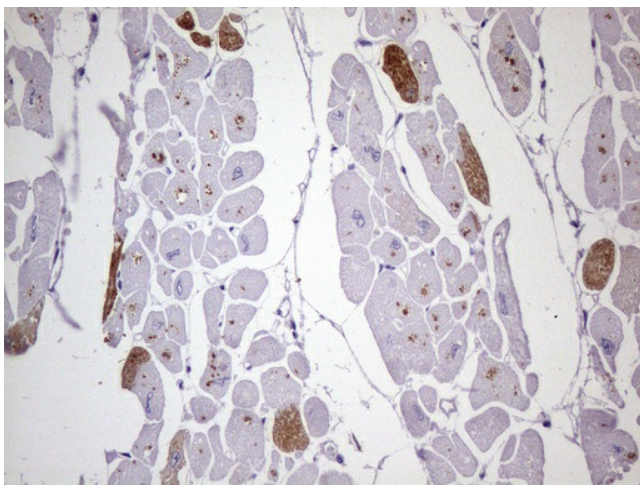
[View online »](#)

Synonyms: ALC1; AMLC; GT1; PRO1957

Product images:



HEK293T cells were transfected with the pCMV6-ENTRY control (Left lane) or pCMV6-ENTRY MYL4 ([RC213170], Right lane) cDNA for 48 hrs and lysed. Equivalent amounts of cell lysates (5 ug per lane) were separated by SDS-PAGE and immunoblotted with anti-MYL4 (1:2000). Positive lysates [LY419311] (100ug) and [LC419311] (20ug) can be purchased separately from OriGene.



Immunohistochemical staining of paraffin-embedded Human adult heart tissue using anti-MYL4 mouse monoclonal antibody. Heat-induced epitope retrieval by EDTA solution buffer pH 8.0 at 120°C for 3 min.