

## Product datasheet for **TA807579AM**

### Myosin (MYL4) Mouse Monoclonal Antibody (Biotin conjugated) [Clone ID: OTI1H6]

#### Product data:

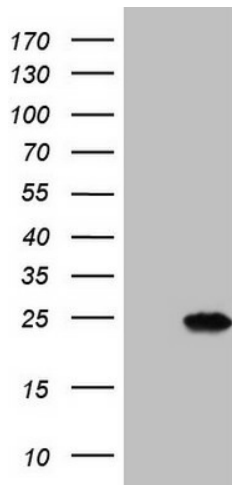
Product Type:	Primary Antibodies
Clone Name:	OTI1H6
Applications:	IHC, WB
Recommended Dilution:	WB 1:2000, IHC 1:150
Reactivity:	Human, Mouse, Rat
Host:	Mouse
Isotype:	IgG2a
Clonality:	Monoclonal
Immunogen:	Human recombinant protein fragment corresponding to amino acids 2-197 of human MYL4(NP_002467) produced in E.coli.
Formulation:	PBS (pH 7.3) containing 1% BSA, 50% glycerol and 0.02% sodium azide.
Concentration:	0.5 mg/ml
Purification:	Purified from mouse ascites fluids or tissue culture supernatant by affinity chromatography (protein A/G)
Conjugation:	Biotin
Storage:	Store at -20°C as received.
Stability:	Stable for 12 months from date of receipt.
Predicted Protein Size:	21.4 kDa
Gene Name:	myosin light chain 4
Database Link:	<a href="#">NP_002467</a> <a href="#">Entrez Gene 4635 Human</a> <a href="#">P12829</a>
Background:	Myosin is a hexameric ATPase cellular motor protein. It is composed of two myosin heavy chains, two nonphosphorylatable myosin alkali light chains, and two phosphorylatable myosin regulatory light chains. This gene encodes a myosin alkali light chain that is found in embryonic muscle and adult atria. Two alternatively spliced transcript variants encoding the same protein have been found for this gene. [provided by RefSeq, Jul 2008]



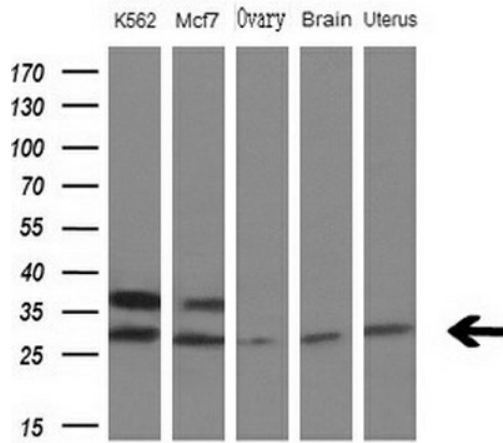
[View online »](#)

Synonyms: ALC1; AMLC; GT1; PRO1957

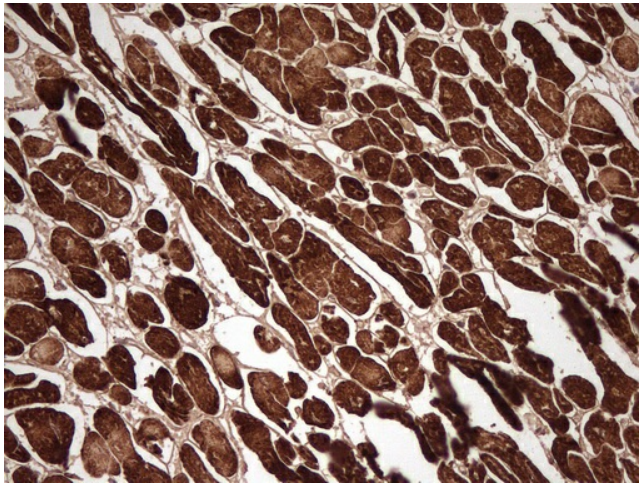
**Product images:**



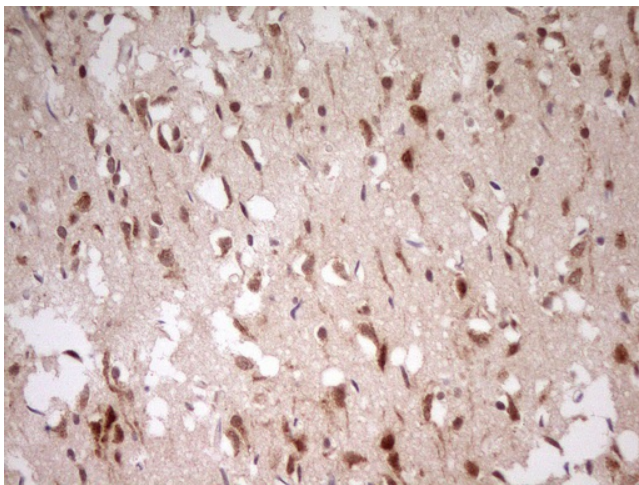
HEK293T cells were transfected with the pCMV6-ENTRY control (Cat# [PS100001], Left lane) or pCMV6-ENTRY MYL4 (Cat# [RC213170], Right lane) cDNA for 48 hrs and lysed. Equivalent amounts of cell lysates (5 ug per lane) were separated by SDS-PAGE and immunoblotted with anti-MYL4 (Cat# [TA807579]). Positive lysates [LY419311] (100ug) and [LC419311] (20ug) can be purchased separately from OriGene.



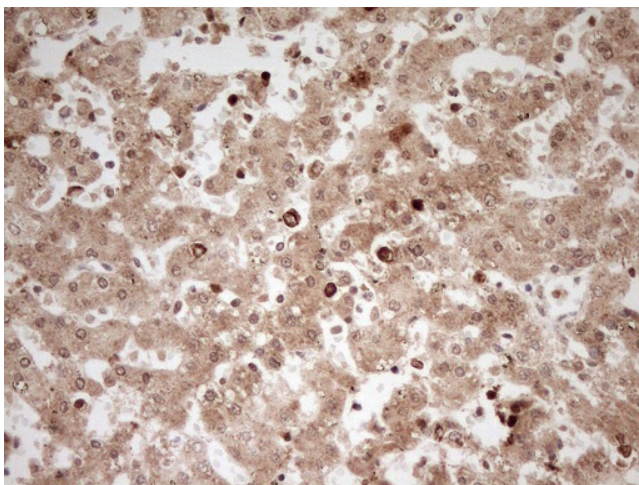
Western blot analysis of extracts (10ug) from 3 different cell lines and 2 human tissue by using anti-MYL4 monoclonal antibody at 1:200 dilution.



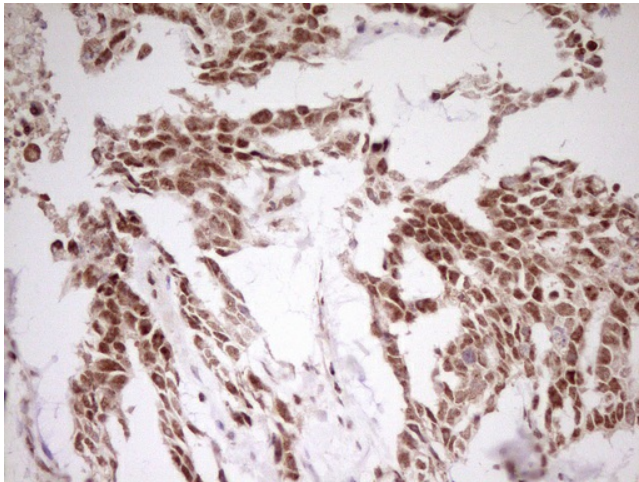
Immunohistochemical staining of paraffin-embedded Human adult heart tissue using anti-MYL4 mouse monoclonal antibody. (Heat-induced epitope retrieval by 1mM EDTA in 10mM Tris, pH8.5, 120°C for 3min, [TA807579])



Immunohistochemical staining of paraffin-embedded Human adult brain tissue using anti-MYL4 mouse monoclonal antibody. (Heat-induced epitope retrieval by 1mM EDTA in 10mM Tris, pH8.5, 120°C for 3min, [TA807579])



Immunohistochemical staining of paraffin-embedded Human embryonic liver tissue using anti-MYL4 mouse monoclonal antibody. (Heat-induced epitope retrieval by 1mM EDTA in 10mM Tris, pH8.5, 120°C for 3min, [TA807579])



Immunohistochemical staining of paraffin-embedded Human testicular cancer tissue using anti-MYL4 mouse monoclonal antibody. (Heat-induced epitope retrieval by 1mM EDTA in 10mM Tris, pH8.5, 120°C for 3min, [TA807579])