

Product datasheet for **TA807574**

CD40 Mouse Monoclonal Antibody [Clone ID: OTI6C12]

Product data:

Product Type:	Primary Antibodies
Clone Name:	OTI6C12
Applications:	WB
Recommended Dilution:	WB 1:2000
Reactivity:	Human
Host:	Mouse
Isotype:	IgG1
Clonality:	Monoclonal
Immunogen:	Human recombinant protein fragment corresponding to amino acids 21-166 of human CD40(NP_001241) produced in E.coli.
Formulation:	PBS (pH 7.3) containing 1% BSA, 50% glycerol and 0.02% sodium azide.
Concentration:	1 mg/ml
Purification:	Purified from mouse ascites fluids or tissue culture supernatant by affinity chromatography (protein A/G)
Conjugation:	Unconjugated
Storage:	Store at -20°C as received.
Stability:	Stable for 12 months from date of receipt.
Predicted Protein Size:	28.4 kDa
Gene Name:	CD40 molecule
Database Link:	NP_001241 Entrez Gene 958 Human P25942



[View online »](#)

Background:

The protein encoded by this gene is a member of the TNF-receptor superfamily. This receptor has been found to be essential in mediating a broad variety of immune and inflammatory responses including T cell-dependent immunoglobulin class switching, memory B cell development, and germinal center formation. AT-hook transcription factor AKNA is reported to coordinately regulate the expression of this receptor and its ligand, which may be important for homotypic cell interactions. Adaptor protein TNFR2 interacts with this receptor and serves as a mediator of the signal transduction. The interaction of this receptor and its ligand is found to be necessary for amyloid-beta-induced microglial activation, and thus is thought to be an early event in Alzheimer disease pathogenesis. Two alternatively spliced transcript variants of this gene encoding distinct isoforms have been reported. [provided by RefSeq, Jul

Synonyms:

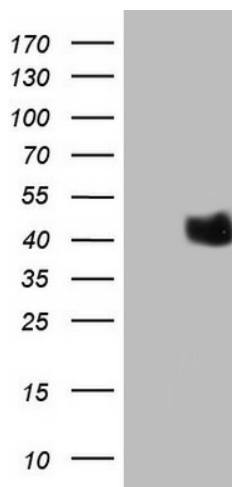
Bp50; CDW40; p50; TNFRSF5

Protein Families:

Druggable Genome, Secreted Protein, Transmembrane

Protein Pathways:

Allograft rejection, Asthma, Autoimmune thyroid disease, Cell adhesion molecules (CAMs), Cytokine-cytokine receptor interaction, Primary immunodeficiency, Systemic lupus erythematosus, Toll-like receptor signaling pathway, Viral myocarditis

Product images:

HEK293T cells were transfected with the pCMV6-ENTRY control (Left lane) or pCMV6-ENTRY CD40 ([RC201977], Right lane) cDNA for 48 hrs and lysed. Equivalent amounts of cell lysates (5 ug per lane) were separated by SDS-PAGE and immunoblotted with anti-CD40 (1:2000). Positive lysates [LY400500] (100ug) and [LC400500] (20ug) can be purchased separately from OriGene.