

## Product datasheet for **TA807568BM**

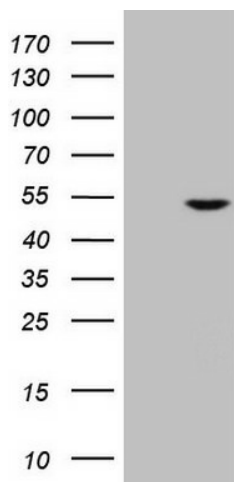
### **NUP43 Mouse Monoclonal Antibody (HRP conjugated) [Clone ID: OTI6H10]**

#### **Product data:**

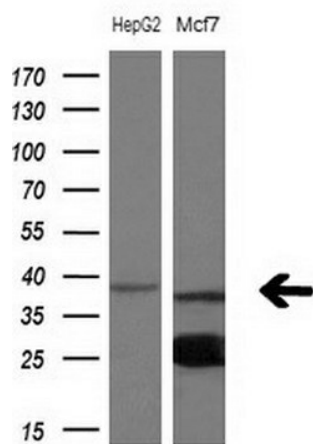
|                         |  |
|-------------------------|--|
| Product Type:           | Primary Antibodies   |
| Clone Name:             | OTI6H10  |
| Applications:           | WB   |
| Recommended Dilution:   | WB 1:2000  |
| Reactivity:             | Human, Mouse, Rat  |
| Host:                   | Mouse  |
| Isotype:                | IgG2a  |
| Clonality:              | Monoclonal   |
| Immunogen:              | Human recombinant protein fragment corresponding to amino acids 1-253 of human NUP43(NP_942590) produced in E.coli.  |
| Formulation:            | PBS (pH 7.3) containing 1% BSA, 50% glycerol.  |
| Concentration:          | 0.5 mg/ml  |
| Purification:           | Purified from mouse ascites fluids or tissue culture supernatant by affinity chromatography (protein A/G)  |
| Conjugation:            | HRP  |
| Storage:                | Store at -20°C as received.  |
| Stability:              | Stable for 12 months from date of receipt.   |
| Predicted Protein Size: | 42 kDa   |
| Gene Name:              | nucleoporin 43kDa  |
| Database Link:          | <a href="#">NP_942590</a><br><a href="#">Entrez Gene 69912 Mouse</a> <a href="#">Entrez Gene 683983 Rat</a> <a href="#">Entrez Gene 348995 Human</a><br><a href="#">Q8NFH3</a>   |
| Background:             | Bidirectional transport of macromolecules between the cytoplasm and nucleus occurs through nuclear pore complexes (NPCs) embedded in the nuclear envelope. NPCs are composed of subcomplexes, and NUP43 is part of one such subcomplex, Nup107-160 (Loiodice et al., 2004 [PubMed 15146057]). [supplied by OMIM, Mar |
| Synonyms:               | bA350J20.1; p42  |


[View online »](#)

## Product images:



HEK293T cells were transfected with the pCMV6-ENTRY control (Left lane) or pCMV6-ENTRY NUP43 ([RC209014], Right lane) cDNA for 48 hrs and lysed. Equivalent amounts of cell lysates (5 ug per lane) were separated by SDS-PAGE and immunoblotted with anti-NUP43. Positive lysates [LY404768] (100ug) and [LC404768] (20ug) can be purchased separately from OriGene.



Western blot analysis of extracts (10ug) from 2 different cell lines by using anti-NUP43 monoclonal antibody at 1:200 dilution.