

Product datasheet for **TA807551S**

FBXO8 Mouse Monoclonal Antibody [Clone ID: OTI3C5]

Product data:

Product Type:	Primary Antibodies
Clone Name:	OTI3C5
Applications:	IHC, WB
Recommended Dilution:	WB 1:2000, IHC 1:150
Reactivity:	Human, Mouse, Rat
Host:	Mouse
Isotype:	IgG1
Clonality:	Monoclonal
Immunogen:	Human recombinant protein fragment corresponding to amino acids 1-231 of human FBXO8(NP_036312) produced in E.coli.
Formulation:	PBS (pH 7.3) containing 1% BSA, 50% glycerol and 0.02% sodium azide.
Concentration:	1 mg/ml
Purification:	Purified from mouse ascites fluids or tissue culture supernatant by affinity chromatography (protein A/G)
Conjugation:	Unconjugated
Storage:	Store at -20°C as received.
Stability:	Stable for 12 months from date of receipt.
Predicted Protein Size:	36.9 kDa
Gene Name:	F-box protein 8
Database Link:	NP_036312 Entrez Gene 306436 Rat Entrez Gene 26269 Human Q9NRD0



[View online »](#)

Background:

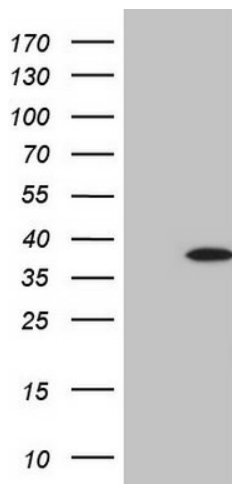
This gene encodes a member of the F-box protein family which is characterized by an approximately 40 amino acid motif, the F-box. The F-box proteins constitute one of the four subunits of the ubiquitin protein ligase complex called SCFs (SKP1-cullin-F-box), which function in phosphorylation-dependent ubiquitination. The F-box proteins are divided into 3 classes: Fbws containing WD-40 domains, Fbls containing leucine-rich repeats, and Fbxs containing either different protein-protein interaction modules or no recognizable motifs. The protein encoded by this gene belongs to the Fbxs class. It contains a C-terminal amino acid sequence that bears a significant similarity with a portion of yeast Sec7p, a critical regulator of vesicular protein transport. This human protein may interact with ADP-ribosylation factor(s)(ARFs) and exhibit ARF-GEF (guanine nucleotide exchange factor) activity. [provided by RefSeq, Jul 2008]

Synonyms:

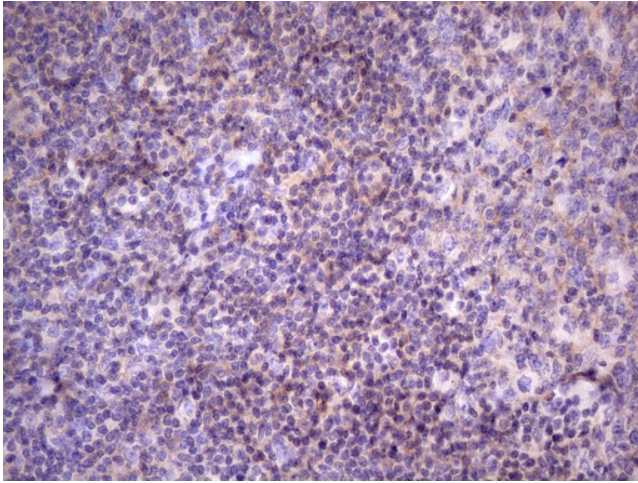
DC10; FBS; FBX8

Protein Families:

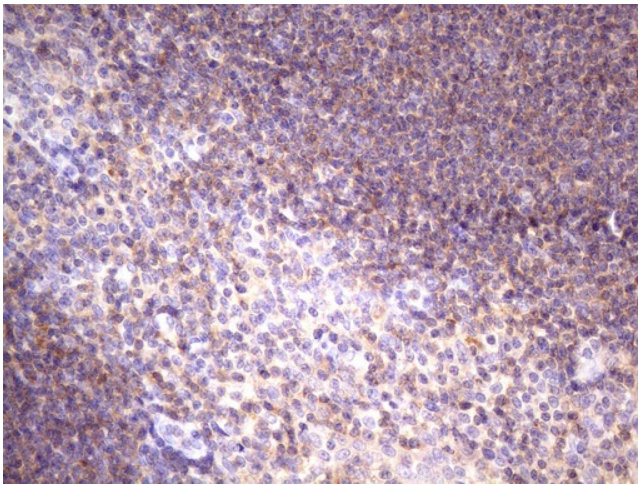
Druggable Genome

Product images:

HEK293T cells were transfected with the pCMV6-ENTRY control (Cat# [PS100001], Left lane) or pCMV6-ENTRY FBXO8 (Cat# [RC202154], Right lane) cDNA for 48 hrs and lysed. Equivalent amounts of cell lysates (5 ug per lane) were separated by SDS-PAGE and immunoblotted with anti-FBXO8 (Cat# [TA807551])(1:2000). Positive lysates [LY415927] (100ug) and [LC415927] (20ug) can be purchased separately from OriGene.



Immunohistochemical staining of paraffin-embedded Human lymph node tissue within the normal limits using anti-FBXO8 mouse monoclonal antibody. (Heat-induced epitope retrieval by 1mM EDTA in 10mM Tris, pH8.5, 120°C for 3min, [TA807551]) (1:150)



Immunohistochemical staining of paraffin-embedded Human tonsil within the normal limits using anti-FBXO8 mouse monoclonal antibody. (Heat-induced epitope retrieval by 1mM EDTA in 10mM Tris, pH8.5, 120°C for 3min, [TA807551]) (1:150)