

Product datasheet for **TA807536BM**

ISG15 Mouse Monoclonal Antibody (HRP conjugated) [Clone ID: OTI6C8]

Product data:

Product Type:	Primary Antibodies
Clone Name:	OTI6C8
Applications:	WB
Recommended Dilution:	WB 1:2000
Reactivity:	Human
Host:	Mouse
Isotype:	IgG1
Clonality:	Monoclonal
Immunogen:	Human recombinant protein fragment corresponding to amino acids 1-157 of human ISG15(NP_005092) produced in E.coli.
Formulation:	PBS (pH 7.3) containing 1% BSA, 50% glycerol.
Concentration:	0.5 mg/ml
Purification:	Purified from mouse ascites fluids or tissue culture supernatant by affinity chromatography (protein A/G)
Conjugation:	HRP
Storage:	Store at -20°C as received.
Stability:	Stable for 12 months from date of receipt.
Predicted Protein Size:	17.7 kDa
Gene Name:	ISG15 ubiquitin-like modifier
Database Link:	NP_005092 Entrez Gene 9636 Human P05161



[View online »](#)

Background:

The protein encoded by this gene is a ubiquitin-like protein that is conjugated to intracellular target proteins upon activation by interferon-alpha and interferon-beta. Several functions have been ascribed to the encoded protein, including chemotactic activity towards neutrophils, direction of ligated target proteins to intermediate filaments, cell-to-cell signaling, and antiviral activity during viral infections. While conjugates of this protein have been found to be noncovalently attached to intermediate filaments, this protein is sometimes secreted. [provided by RefSeq, Dec 2012]

Synonyms:

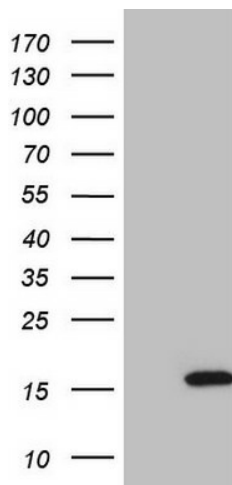
G1P2; hUCRP; IFI15; IMD38; IP17; UCRP

Protein Families:

Druggable Genome, Secreted Protein

Protein Pathways:

RIG-I-like receptor signaling pathway

Product images:

HEK293T cells were transfected with the pCMV6-ENTRY control (Cat# [PS100001], Left lane) or pCMV6-ENTRY ISG15 (Cat# [RC201235], Right lane) cDNA for 48 hrs and lysed. Equivalent amounts of cell lysates (5 ug per lane) were separated by SDS-PAGE and immunoblotted with anti-ISG15 (Cat# [TA807536])(1:2000).