

Product datasheet for **TA807532S**

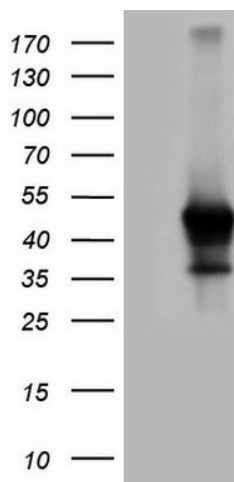
Rex1 (ZFP42) Mouse Monoclonal Antibody [Clone ID: OTI3H9]

Product data:

Product Type:	Primary Antibodies
Clone Name:	OTI3H9
Applications:	WB
Recommended Dilution:	WB 1:2000
Reactivity:	Human
Host:	Mouse
Isotype:	IgG1
Clonality:	Monoclonal
Immunogen:	Human recombinant protein fragment corresponding to amino acids 1-235 of human ZFP42(NP_777560) produced in E.coli.
Formulation:	PBS (pH 7.3) containing 1% BSA, 50% glycerol and 0.02% sodium azide.
Concentration:	1 mg/ml
Purification:	Purified from mouse ascites fluids or tissue culture supernatant by affinity chromatography (protein A/G)
Conjugation:	Unconjugated
Storage:	Store at -20°C as received.
Stability:	Stable for 12 months from date of receipt.
Predicted Protein Size:	34.6 kDa
Gene Name:	ZFP42 zinc finger protein
Database Link:	NP_777560 Entrez Gene 132625 Human Q96MM3
Synonyms:	REX-1; REX1; zfp-42; ZNF754
Protein Families:	Adult stem cells, Embryonic stem cells, ES Cell Differentiation/IPS, Stem cell - Pluripotency



[View online »](#)

Product images:

HEK293T cells were transfected with the pCMV6-ENTRY control (Left lane) or pCMV6-ENTRY ZFP42 ([RC223916], Right lane) cDNA for 48 hrs and lysed. Equivalent amounts of cell lysates (5 ug per lane) were separated by SDS-PAGE and immunoblotted with anti-ZFP42 (1:2000). Positive lysates [LY406385] (100ug) and [LC406385] (20ug) can be purchased separately from OriGene.