

## Product datasheet for **TA807532AM**

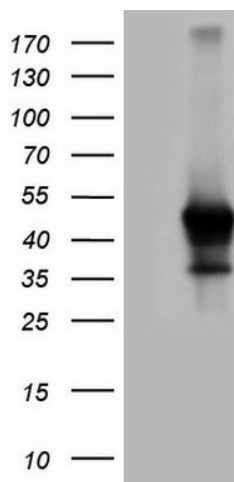
### **Rex1 (ZFP42) Mouse Monoclonal Antibody (Biotin conjugated) [Clone ID: OTI3H9]**

#### **Product data:**

<b>Product Type:</b>	Primary Antibodies
<b>Clone Name:</b>	OTI3H9
<b>Applications:</b>	WB
<b>Recommended Dilution:</b>	WB 1:2000
<b>Reactivity:</b>	Human
<b>Host:</b>	Mouse
<b>Isotype:</b>	IgG1
<b>Clonality:</b>	Monoclonal
<b>Immunogen:</b>	Human recombinant protein fragment corresponding to amino acids 1-235 of human ZFP42(NP_777560) produced in E.coli.
<b>Formulation:</b>	PBS (pH 7.3) containing 1% BSA, 50% glycerol and 0.02% sodium azide.
<b>Concentration:</b>	0.5 mg/ml
<b>Purification:</b>	Purified from mouse ascites fluids or tissue culture supernatant by affinity chromatography (protein A/G)
<b>Conjugation:</b>	Biotin
<b>Storage:</b>	Store at -20°C as received.
<b>Stability:</b>	Stable for 12 months from date of receipt.
<b>Predicted Protein Size:</b>	34.6 kDa
<b>Gene Name:</b>	ZFP42 zinc finger protein
<b>Database Link:</b>	<a href="#">NP_777560</a> <a href="#">Entrez Gene 132625 Human</a> <a href="#">Q96MM3</a>
<b>Synonyms:</b>	REX-1; REX1; zfp-42; ZNF754
<b>Protein Families:</b>	Adult stem cells, Embryonic stem cells, ES Cell Differentiation/IPS, Stem cell - Pluripotency



[View online »](#)

**Product images:**

HEK293T cells were transfected with the pCMV6-ENTRY control (Left lane) or pCMV6-ENTRY ZFP42 ([RC223916], Right lane) cDNA for 48 hrs and lysed. Equivalent amounts of cell lysates (5 ug per lane) were separated by SDS-PAGE and immunoblotted with anti-ZFP42 (1:2000). Positive lysates [LY406385] (100ug) and [LC406385] (20ug) can be purchased separately from OriGene.