

## Product datasheet for **TA807504AM**

### DMRT1 Mouse Monoclonal Antibody (Biotin conjugated) [Clone ID: OTI3G10]

#### Product data:

Product Type:	Primary Antibodies
Clone Name:	OTI3G10
Applications:	WB
Recommended Dilution:	WB 1:2000
Reactivity:	Human
Host:	Mouse
Isotype:	IgG1
Clonality:	Monoclonal
Immunogen:	Human recombinant protein fragment corresponding to amino acids 1-210 of human DMRT1(NP_068770) produced in E.coli.
Formulation:	PBS (pH 7.3) containing 1% BSA, 50% glycerol and 0.02% sodium azide.
Concentration:	0.5 mg/ml
Purification:	Purified from mouse ascites fluids or tissue culture supernatant by affinity chromatography (protein A/G)
Conjugation:	Biotin
Storage:	Store at -20°C as received.
Stability:	Stable for 12 months from date of receipt.
Predicted Protein Size:	39.3 kDa
Gene Name:	doublesex and mab-3 related transcription factor 1
Database Link:	<a href="#">NP_068770</a> <a href="#">Entrez Gene 1761 Human</a> <a href="#">Q9Y5R6</a>
Background:	This gene is found in a cluster with two other members of the gene family, having in common a zinc finger-like DNA-binding motif (DM domain). The DM domain is an ancient, conserved component of the vertebrate sex-determining pathway that is also a key regulator of male development in flies and nematodes. This gene exhibits a gonad-specific and sexually dimorphic expression pattern. Defective testicular development and XY feminization occur when this gene is hemizygous. [provided by RefSeq, Jul 2008]

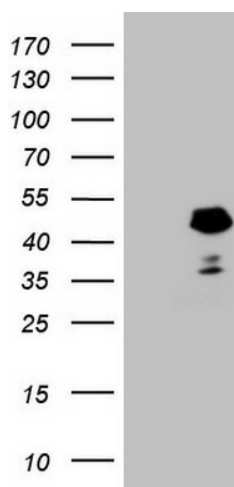


[View online »](#)

Synonyms: CT154; DMT1

Protein Families: Druggable Genome, Transcription Factors

### Product images:



HEK293T cells were transfected with the pCMV6-ENTRY control (Left lane) or pCMV6-ENTRY DMRT1 ([RC208108], Right lane) cDNA for 48 hrs and lysed. Equivalent amounts of cell lysates (5 ug per lane) were separated by SDS-PAGE and immunoblotted with anti-DMRT1. Positive lysates [LY411862] (100ug) and [LC411862] (20ug) can be purchased separately from OriGene.