

Product datasheet for **TA807502S**

IL12B Mouse Monoclonal Antibody [Clone ID: OTI3H6]

Product data:

Product Type:	Primary Antibodies
Clone Name:	OTI3H6
Applications:	WB
Recommended Dilution:	WB 1:2000
Reactivity:	Human
Host:	Mouse
Isotype:	IgG1
Clonality:	Monoclonal
Immunogen:	Full length human recombinant protein of human IL12B (NP_002178) produced in SF9 cell.
Formulation:	PBS (pH 7.3) containing 1% BSA, 50% glycerol and 0.02% sodium azide.
Concentration:	1 mg/ml
Purification:	Purified from mouse ascites fluids or tissue culture supernatant by affinity chromatography (protein A/G)
Conjugation:	Unconjugated
Storage:	Store at -20°C as received.
Stability:	Stable for 12 months from date of receipt.
Predicted Protein Size:	34.6 kDa
Gene Name:	interleukin 12B
Database Link:	NP_002178 Entrez Gene 3593 Human P29460



[View online »](#)

Background:

This gene encodes a subunit of interleukin 12, a cytokine that acts on T and natural killer cells, and has a broad array of biological activities. Interleukin 12 is a disulfide-linked heterodimer composed of the 40 kD cytokine receptor like subunit encoded by this gene, and a 35 kD subunit encoded by IL12A. This cytokine is expressed by activated macrophages that serve as an essential inducer of Th1 cells development. This cytokine has been found to be important for sustaining a sufficient number of memory/effector Th1 cells to mediate long-term protection to an intracellular pathogen. Overexpression of this gene was observed in the central nervous system of patients with multiple sclerosis (MS), suggesting a role of this cytokine in the pathogenesis of the disease. The promoter polymorphism of this gene has been reported to be associated with the severity of atopic and non-atopic asthma in children. [provided by RefSeq, Jul 2008]

Synonyms:

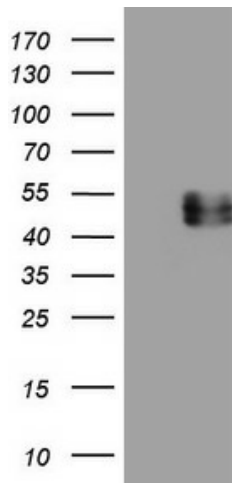
CLMF; CLMF2; IL-12B; IMD28; IMD29; NKSF; NKSF2

Protein Families:

Druggable Genome, Secreted Protein, Transmembrane

Protein Pathways:

Allograft rejection, Cytokine-cytokine receptor interaction, Jak-STAT signaling pathway, RIG-I-like receptor signaling pathway, Toll-like receptor signaling pathway, Type I diabetes mellitus

Product images:

HEK293T cells were transfected with the pCMV6-ENTRY control (Left lane) or pCMV6-ENTRY IL12B ([RC209679], Right lane) cDNA for 48 hrs and lysed. Equivalent amounts of cell lysates (5 ug per lane) were separated by SDS-PAGE and immunoblotted with anti-IL12B (1:2000). Positive lysates [LY400792] (100ug) and [LC400792] (20ug) can be purchased separately from OriGene.