

Product datasheet for **TA807500**

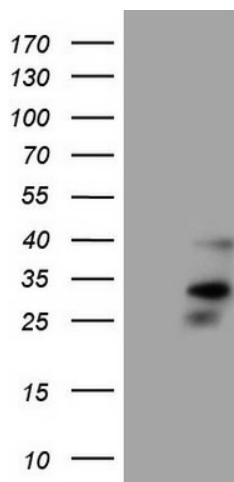
ORAI2 Mouse Monoclonal Antibody [Clone ID: OTI8D11]

Product data:

Product Type:	Primary Antibodies
Clone Name:	OTI8D11
Applications:	WB
Recommended Dilution:	WB 1:500
Reactivity:	Human, Mouse, Rat
Host:	Mouse
Isotype:	IgG2b
Clonality:	Monoclonal
Immunogen:	Full length human recombinant protein of human ORAI2 (NP_116220) produced in HEK293T cell.
Formulation:	PBS (pH 7.3) containing 1% BSA, 50% glycerol and 0.02% sodium azide.
Concentration:	1 mg/ml
Purification:	Purified from mouse ascites fluids or tissue culture supernatant by affinity chromatography (protein A/G)
Conjugation:	Unconjugated
Storage:	Store at -20°C as received.
Stability:	Stable for 12 months from date of receipt.
Predicted Protein Size:	28.4 kDa
Gene Name:	ORAI calcium release-activated calcium modulator 2
Database Link:	NP_116220 Entrez Gene 269717 Mouse Entrez Gene 304592 Rat Entrez Gene 80228 Human Q96SN7
Synonyms:	C7orf19; CBCIP2; MEM142B; TMEM142B
Protein Families:	Transmembrane



[View online »](#)

Product images:

HEK293T cells were transfected with the pCMV6-ENTRY control (Cat# [PS100001], Left lane) or pCMV6-ENTRY ORAI2 (Cat# [RC221137], Right lane) cDNA for 48 hrs and lysed. Equivalent amounts of cell lysates (5 ug per lane) were separated by SDS-PAGE and immunoblotted with anti-ORAI2 (Cat# TA807500)(1:500). Positive lysates [LY409919] (100ug) and [LC409919] (20ug) can be purchased separately from OriGene.