

## Product datasheet for **TA807497BM**

### SFRP2 Mouse Monoclonal Antibody (HRP conjugated) [Clone ID: OTI6C2]

#### Product data:

Product Type:	Primary Antibodies
Clone Name:	OTI6C2
Applications:	IHC, WB
Recommended Dilution:	IHC 1:150
Reactivity:	Human, Mouse, Rat
Host:	Mouse
Isotype:	IgG2a
Clonality:	Monoclonal
Immunogen:	Human recombinant protein fragment corresponding to amino acids 25-295 of human SFRP2(NP_003004) produced in E.coli.
Formulation:	PBS (pH 7.3) containing 1% BSA, 50% glycerol.
Concentration:	0.5 mg/ml
Purification:	Purified from mouse ascites fluids or tissue culture supernatant by affinity chromatography (protein A/G)
Conjugation:	HRP
Storage:	Store at -20°C as received.
Stability:	Stable for 12 months from date of receipt.
Predicted Protein Size:	31.4 kDa
Gene Name:	secreted frizzled related protein 2
Database Link:	<a href="#">NP_003004</a> <a href="#">Entrez Gene 20319 Mouse</a> <a href="#">Entrez Gene 310552 Rat</a> <a href="#">Entrez Gene 6423 Human</a> <a href="#">Q96HF1</a>
Background:	This gene encodes a member of the SFRP family that contains a cysteine-rich domain homologous to the putative Wnt-binding site of Frizzled proteins. SFRPs act as soluble modulators of Wnt signaling. Methylation of this gene is a potential marker for the presence of colorectal cancer. [provided by RefSeq, Jul 2008]
Synonyms:	FRP-2; SARP1; SDF-5

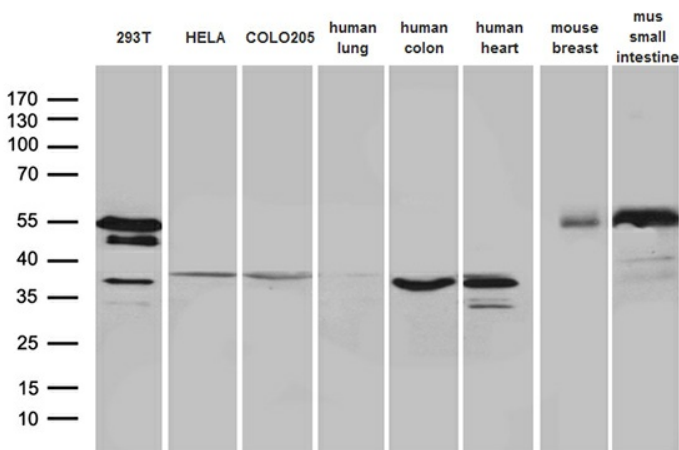


[View online »](#)

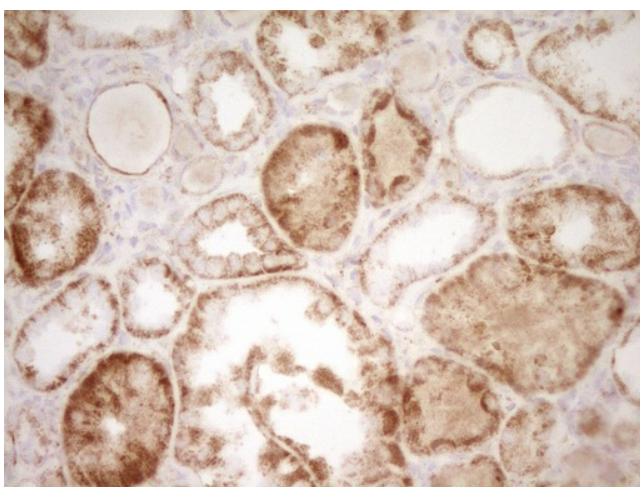
Protein Families: Secreted Protein

Protein Pathways: Wnt signaling pathway

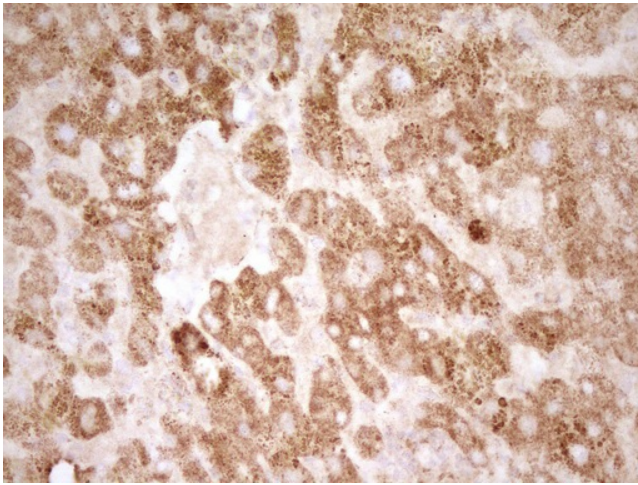
**Product images:**



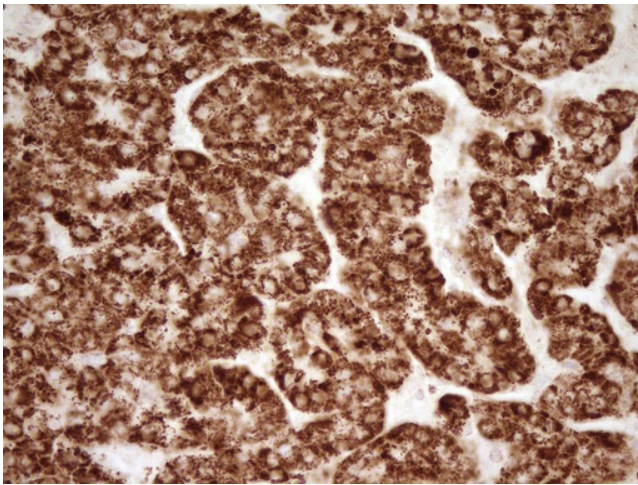
Western blot analysis of extracts (35ug) from 3 different cell lines and 5 different tissue lysates by using anti-SFRP2 monoclonal antibody (1:500).



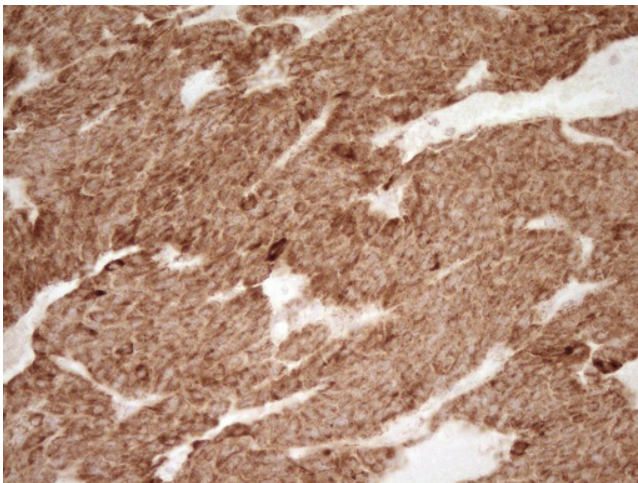
Immunohistochemical staining of paraffin-embedded Human Kidney tissue within the normal limits using anti-SFRP2 mouse monoclonal antibody. (Heat-induced epitope retrieval by 1mM EDTA in 10mM Tris, pH8.5, 120°C for 3min, [TA807497])



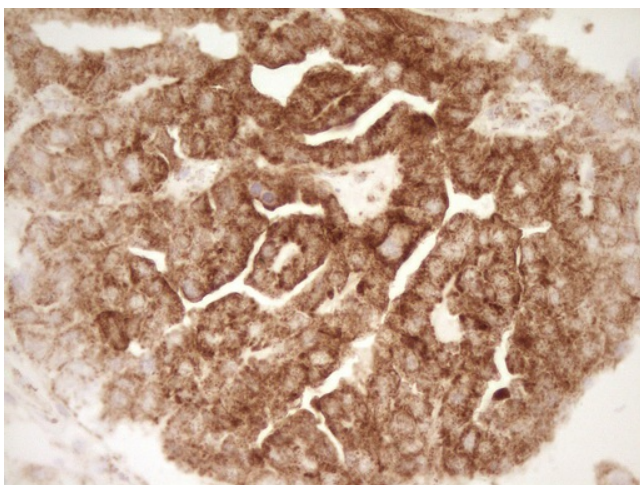
Immunohistochemical staining of paraffin-embedded Human liver tissue within the normal limits using anti-SFRP2 mouse monoclonal antibody. (Heat-induced epitope retrieval by 1mM EDTA in 10mM Tris, pH8.5, 120°C for 3min, [TA807497])



Immunohistochemical staining of paraffin-embedded Carcinoma of Human liver tissue using anti-SFRP2 mouse monoclonal antibody. (Heat-induced epitope retrieval by 1mM EDTA in 10mM Tris, pH8.5, 120°C for 3min, [TA807497])



Immunohistochemical staining of paraffin-embedded Carcinoma of Human lung tissue using anti-SFRP2 mouse monoclonal antibody. (Heat-induced epitope retrieval by 1mM EDTA in 10mM Tris, pH8.5, 120°C for 3min, [TA807497])



Immunohistochemical staining of paraffin-embedded Adenocarcinoma of Human ovary tissue using anti-SFRP2 mouse monoclonal antibody. (Heat-induced epitope retrieval by 1mM EDTA in 10mM Tris, pH8.5, 120°C for 3min, [TA807497])