

## Product datasheet for **TA807497**

### SFRP2 Mouse Monoclonal Antibody [Clone ID: OTI6C2]

#### Product data:

|                         |   |
|-------------------------|---|
| Product Type:           | Primary Antibodies  |
| Clone Name:             | OTI6C2  |
| Applications:           | IHC, WB   |
| Recommended Dilution:   | IHC 1:150   |
| Reactivity:             | Human, Mouse, Rat   |
| Host:                   | Mouse   |
| Isotype:                | IgG2a   |
| Clonality:              | Monoclonal  |
| Immunogen:              | Human recombinant protein fragment corresponding to amino acids 25-295 of human SFRP2(NP_003004) produced in E.coli.  |
| Formulation:            | PBS (PH 7.3) containing 1% BSA, 50% glycerol and 0.02% sodium azide.  |
| Concentration:          | 1 mg/ml   |
| Purification:           | Purified from mouse ascites fluids or tissue culture supernatant by affinity chromatography (protein A/G)   |
| Conjugation:            | Unconjugated  |
| Storage:                | Store at -20°C as received.   |
| Stability:              | Stable for 12 months from date of receipt.  |
| Predicted Protein Size: | 31.4 kDa  |
| Gene Name:              | secreted frizzled related protein 2   |
| Database Link:          | <a href="#">NP_003004</a><br><a href="#">Entrez Gene 20319 Mouse</a> <a href="#">Entrez Gene 310552 Rat</a> <a href="#">Entrez Gene 6423 Human</a><br><a href="#">Q96HF1</a>  |
| Background:             | This gene encodes a member of the SFRP family that contains a cysteine-rich domain homologous to the putative Wnt-binding site of Frizzled proteins. SFRPs act as soluble modulators of Wnt signaling. Methylation of this gene is a potential marker for the presence of colorectal cancer. [provided by RefSeq, Jul 2008] |
| Synonyms:               | FRP-2; SARP1; SDF-5   |

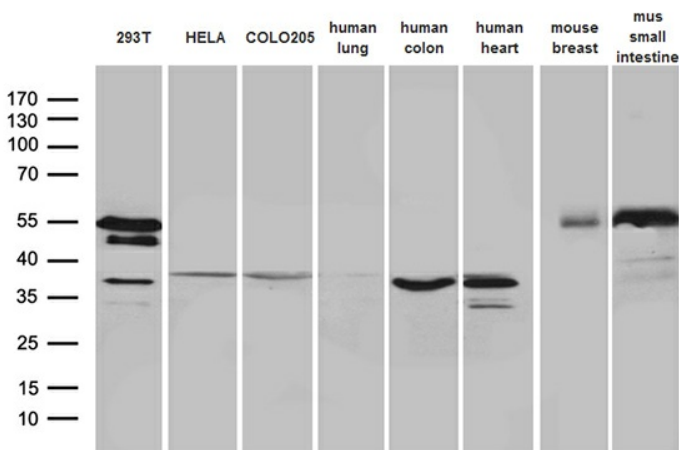


[View online »](#)

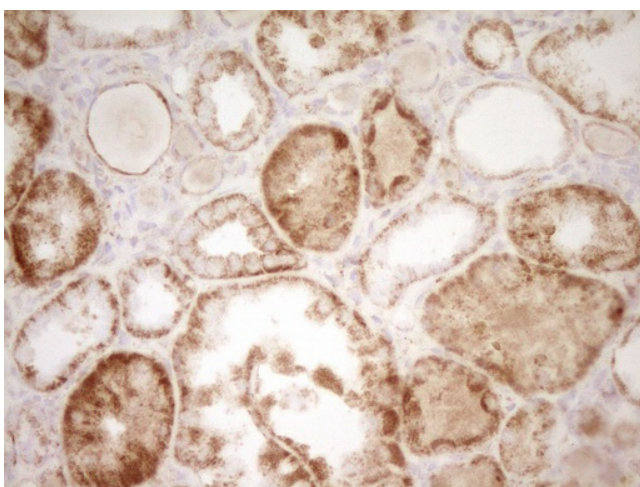
Protein Families: Secreted Protein

Protein Pathways: Wnt signaling pathway

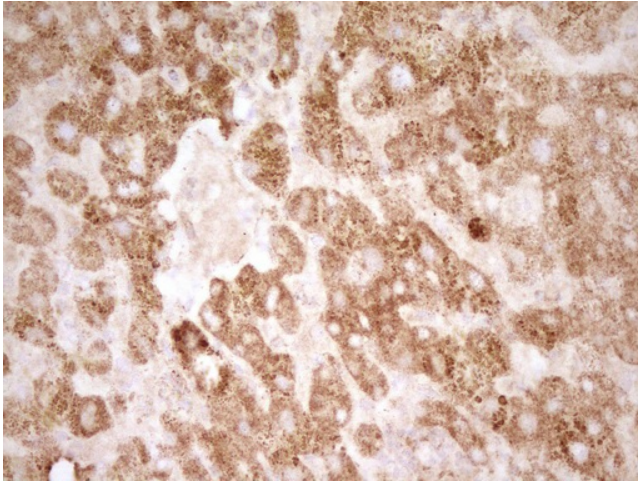
**Product images:**



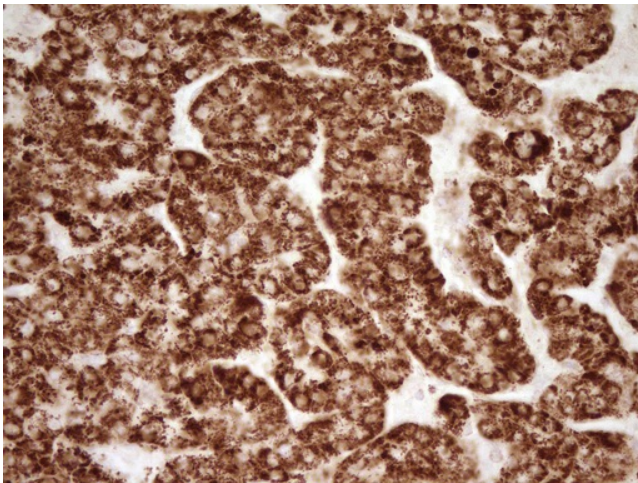
Western blot analysis of extracts (35ug) from 3 different cell lines and 5 different tissue lysates by using anti-SFRP2 monoclonal antibody (1:500).



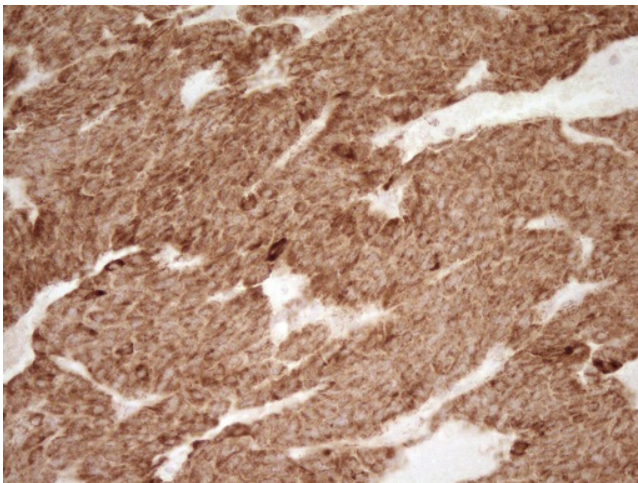
Immunohistochemical staining of paraffin-embedded Human Kidney tissue within the normal limits using anti-SFRP2 mouse monoclonal antibody. (Heat-induced epitope retrieval by 1mM EDTA in 10mM Tris, pH8.5, 120°C for 3min, TA807497)



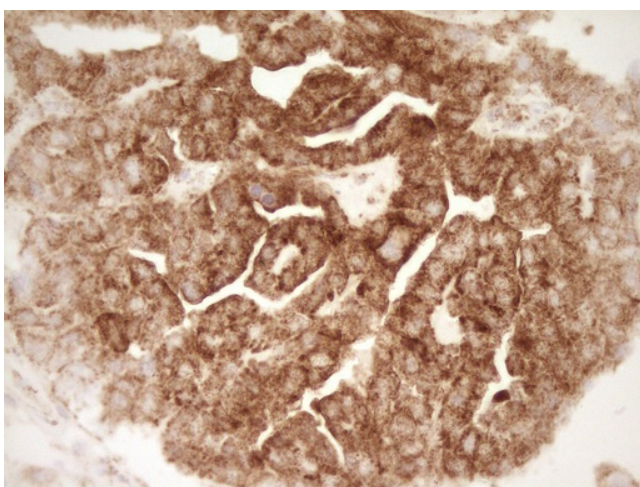
Immunohistochemical staining of paraffin-embedded Human liver tissue within the normal limits using anti-SFRP2 mouse monoclonal antibody. (Heat-induced epitope retrieval by 1mM EDTA in 10mM Tris, pH8.5, 120°C for 3min, TA807497)



Immunohistochemical staining of paraffin-embedded Carcinoma of Human liver tissue using anti-SFRP2 mouse monoclonal antibody. (Heat-induced epitope retrieval by 1mM EDTA in 10mM Tris, pH8.5, 120°C for 3min, TA807497)



Immunohistochemical staining of paraffin-embedded Carcinoma of Human lung tissue using anti-SFRP2 mouse monoclonal antibody. (Heat-induced epitope retrieval by 1mM EDTA in 10mM Tris, pH8.5, 120°C for 3min, TA807497)



Immunohistochemical staining of paraffin-embedded Adenocarcinoma of Human ovary tissue using anti-SFRP2 mouse monoclonal antibody. (Heat-induced epitope retrieval by 1mM EDTA in 10mM Tris, pH8.5, 120°C for 3min, TA807497)