

Product datasheet for **TA807483**

TRIB3 Mouse Monoclonal Antibody [Clone ID: OTI3C6]

Product data:

Product Type:	Primary Antibodies
Clone Name:	OTI3C6
Applications:	IHC, WB
Recommended Dilution:	WB 1:2000, IHC 1:150
Reactivity:	Human
Host:	Mouse
Isotype:	IgG1
Clonality:	Monoclonal
Immunogen:	Human recombinant protein fragment corresponding to amino acids 1-200 of human TRIB3(NP_066981) produced in E.coli.
Formulation:	PBS (pH 7.3) containing 1% BSA, 50% glycerol and 0.02% sodium azide.
Concentration:	1 mg/ml
Purification:	Purified from mouse ascites fluids or tissue culture supernatant by affinity chromatography (protein A/G)
Conjugation:	Unconjugated
Storage:	Store at -20°C as received.
Stability:	Stable for 12 months from date of receipt.
Predicted Protein Size:	39.4 kDa
Gene Name:	tribbles pseudokinase 3
Database Link:	NP_066981 Entrez Gene 57761 Human Q96RU7
Background:	The protein encoded by this gene is a putative protein kinase that is induced by the transcription factor NF-kappaB. The encoded protein is a negative regulator of NF-kappaB and can also sensitize cells to TNF- and TRAIL-induced apoptosis. In addition, this protein can negatively regulate the cell survival serine-threonine kinase AKT1. [provided by RefSeq, Jul 2008]

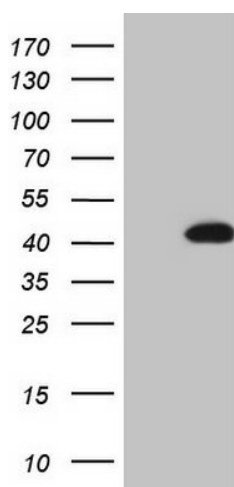


[View online »](#)

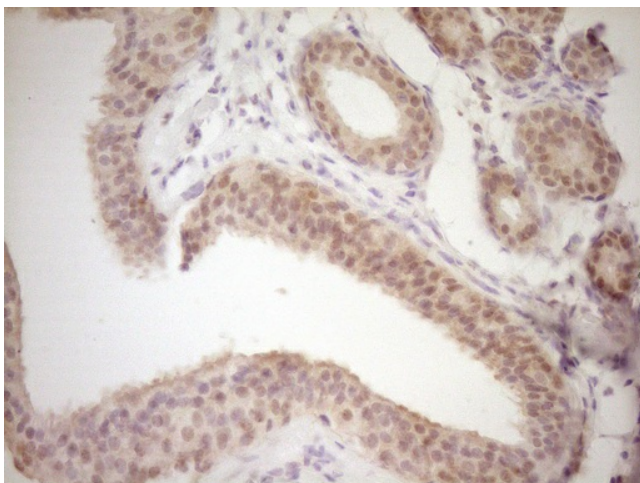
Synonyms: C20orf97; NIPK; SINK; SKIP3; TRB3

Protein Families: Druggable Genome, Protein Kinase, Transcription Factors

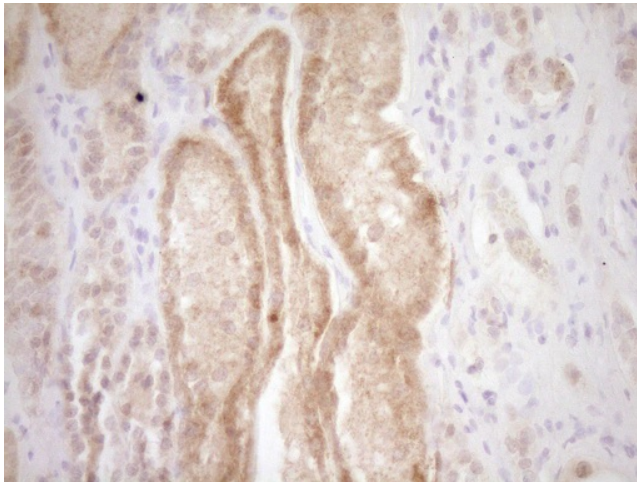
Product images:



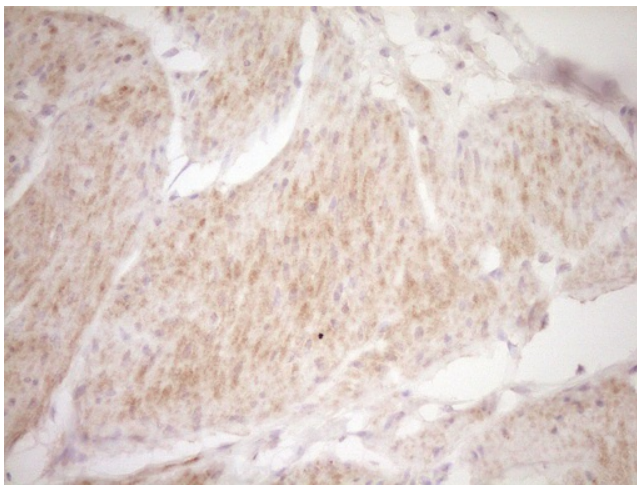
HEK293T cells were transfected with the pCMV6-ENTRY control (Cat# [PS100001], Left lane) or pCMV6-ENTRY TRIB3 (Cat# [RC206687], Right lane) cDNA for 48 hrs and lysed. Equivalent amounts of cell lysates (5 ug per lane) were separated by SDS-PAGE and immunoblotted with anti-TRIB3 (Cat# TA807483). Positive lysates [LY402848] (100ug) and [LC402848] (20ug) can be purchased separately from OriGene.



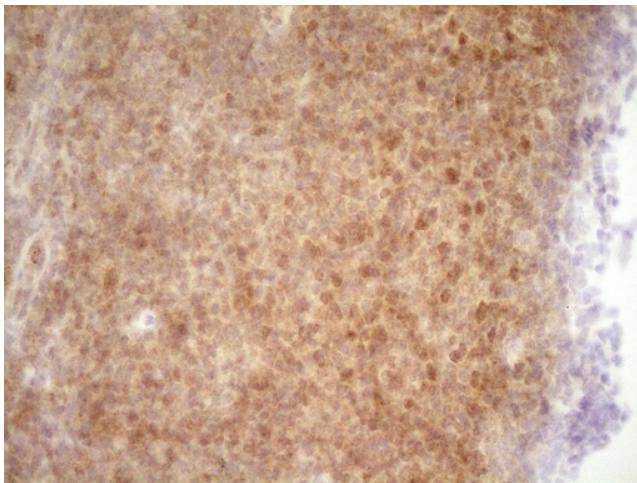
Immunohistochemical staining of paraffin-embedded Adenocarcinoma of Human breast tissue using anti-TRIB3 mouse monoclonal antibody. (Heat-induced epitope retrieval by 1mM EDTA in 10mM Tris, pH8.5, 120°C for 3min, TA807483)



Immunohistochemical staining of paraffin-embedded Human Kidney tissue within the normal limits using anti-TRIB3 mouse monoclonal antibody. (Heat-induced epitope retrieval by 1mM EDTA in 10mM Tris, pH8.5, 120°C for 3min, TA807483)



Immunohistochemical staining of paraffin-embedded Carcinoma of Human bladder tissue using anti-TRIB3 mouse monoclonal antibody. (Heat-induced epitope retrieval by 1mM EDTA in 10mM Tris, pH8.5, 120°C for 3min, TA807483)



Immunohistochemical staining of paraffin-embedded Human lymph node tissue within the normal limits using anti-TRIB3 mouse monoclonal antibody. (Heat-induced epitope retrieval by 1mM EDTA in 10mM Tris, pH8.5, 120°C for 3min, TA807483)