

## Product datasheet for **TA807481AM**

### VEGFD Mouse Monoclonal Antibody (Biotin conjugated) [Clone ID: OTI6C5]

#### Product data:

Product Type:	Primary Antibodies
Clone Name:	OTI6C5
Applications:	WB
Recommended Dilution:	WB 1:2000
Reactivity:	Human
Host:	Mouse
Isotype:	IgG1
Clonality:	Monoclonal
Immunogen:	Human recombinant protein fragment corresponding to amino acids 89-205 of human FIGF(NP_004460) produced in E.coli.
Formulation:	PBS (pH 7.3) containing 1% BSA, 50% glycerol and 0.02% sodium azide.
Concentration:	0.5 mg/ml
Purification:	Purified from mouse ascites fluids or tissue culture supernatant by affinity chromatography (protein A/G)
Conjugation:	Biotin
Storage:	Store at -20°C as received.
Stability:	Stable for 12 months from date of receipt.
Predicted Protein Size:	37.8 kDa
Gene Name:	c-fos induced growth factor
Database Link:	<a href="#">NP_004460</a> <a href="#">Entrez Gene 2277 Human</a> <a href="#">O43915</a>



[View online »](#)

**Background:**

The protein encoded by this gene is a member of the platelet-derived growth factor/vascular endothelial growth factor (PDGF/VEGF) family and is active in angiogenesis, lymphangiogenesis, and endothelial cell growth. This secreted protein undergoes a complex proteolytic maturation, generating multiple processed forms which bind and activate VEGFR-2 and VEGFR-3 receptors. This protein is structurally and functionally similar to vascular endothelial growth factor C. Read-through transcription has been observed between this locus and the upstream PIR (GenelD 8544) locus. [provided by RefSeq, Feb 2011]

**Synonyms:**

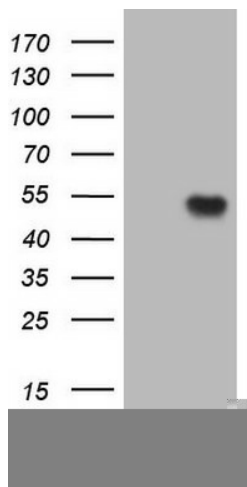
VEGF-D; VEGFD

**Protein Families:**

Druggable Genome, Secreted Protein

**Protein Pathways:**

Bladder cancer, Cytokine-cytokine receptor interaction, Focal adhesion, mTOR signaling pathway, Pancreatic cancer, Pathways in cancer, Renal cell carcinoma

**Product images:**

HEK293T cells were transfected with the pCMV6-ENTRY control (Left lane) or pCMV6-ENTRY FIGF ([RC206549], Right lane) cDNA for 48 hrs and lysed. Equivalent amounts of cell lysates (5 ug per lane) were separated by SDS-PAGE and immunoblotted with anti-FIGF. Positive lysates [LY417969] (100ug) and [LC417969] (20ug) can be purchased separately from OriGene.