

Product datasheet for **TA807476AM**

Granulin (GRN) Mouse Monoclonal Antibody (Biotin conjugated) [Clone ID: OTI2F4]

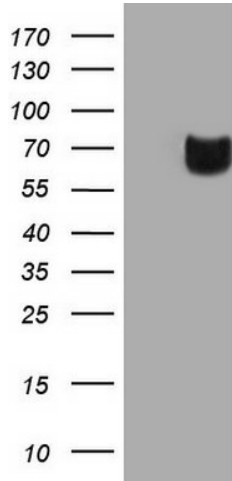
Product data:

Product Type:	Primary Antibodies
Clone Name:	OTI2F4
Applications:	IHC, WB
Recommended Dilution:	WB 1:2000, IHC 1:150
Reactivity:	Human
Host:	Mouse
Isotype:	IgG1
Clonality:	Monoclonal
Immunogen:	Human recombinant protein fragment corresponding to amino acids 327-593 of human GRN(NP_002078) produced in E.coli.
Formulation:	PBS (pH 7.3) containing 1% BSA, 50% glycerol and 0.02% sodium azide.
Concentration:	0.5 mg/ml
Purification:	Purified from mouse ascites fluids or tissue culture supernatant by affinity chromatography (protein A/G)
Conjugation:	Biotin
Storage:	Store at -20°C as received.
Stability:	Stable for 12 months from date of receipt.
Predicted Protein Size:	61.7 kDa
Gene Name:	granulin
Database Link:	NP_002078 Entrez Gene 2896 Human P28799
Synonyms:	CLN11; GEP; GP88; PCDGF; PEPI; PGRN
Protein Families:	Druggable Genome, Secreted Protein

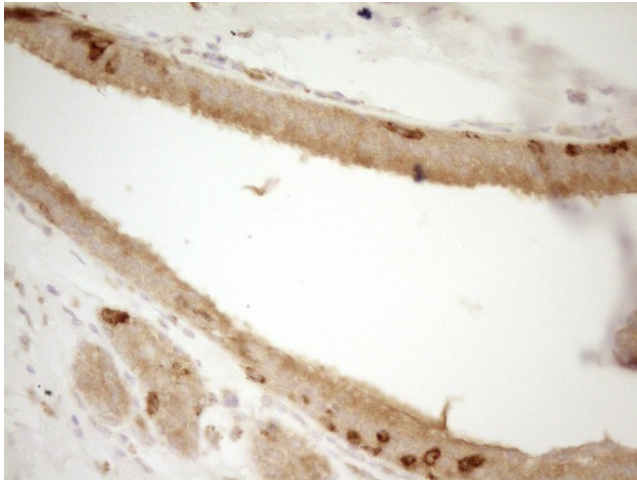


[View online »](#)

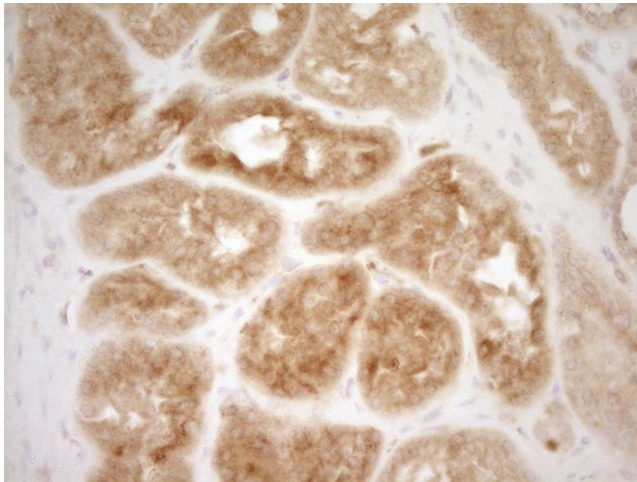
Product images:



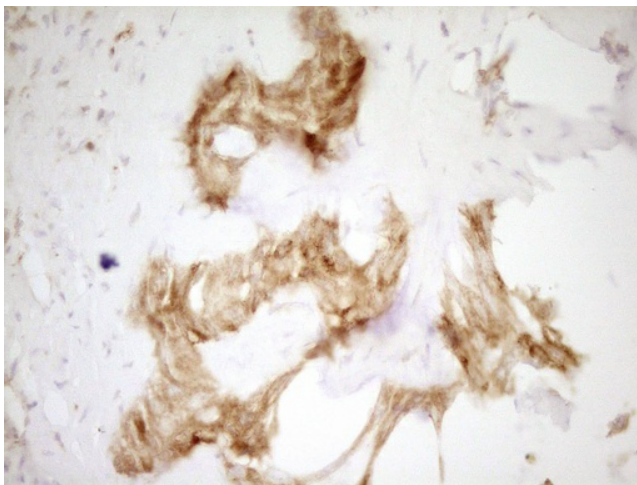
HEK293T cells were transfected with the pCMV6-ENTRY control (Left lane) or pCMV6-ENTRY GRN ([RC202139], Right lane) cDNA for 48 hrs and lysed. Equivalent amounts of cell lysates (5 ug per lane) were separated by SDS-PAGE and immunoblotted with anti-GRN. Positive lysates [LY419545] (100ug) and [LC419545] (20ug) can be purchased separately from OriGene.



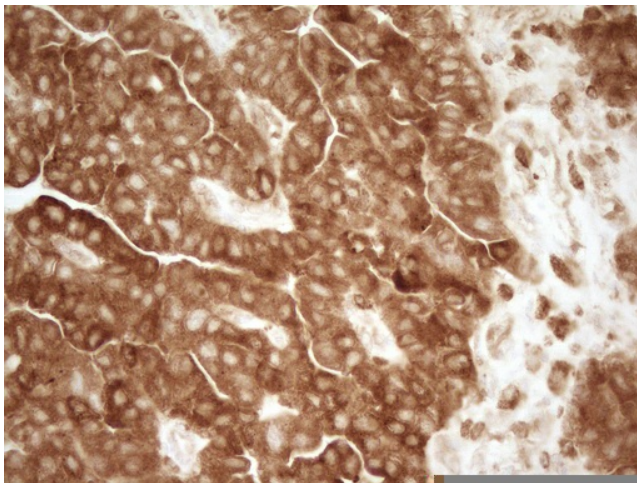
Immunohistochemical staining of paraffin-embedded Adenocarcinoma of Human breast tissue using anti-GRN mouse monoclonal antibody. (Heat-induced epitope retrieval by 1mM EDTA in 10mM Tris, pH8.5, 120°C for 3min, [TA807476])



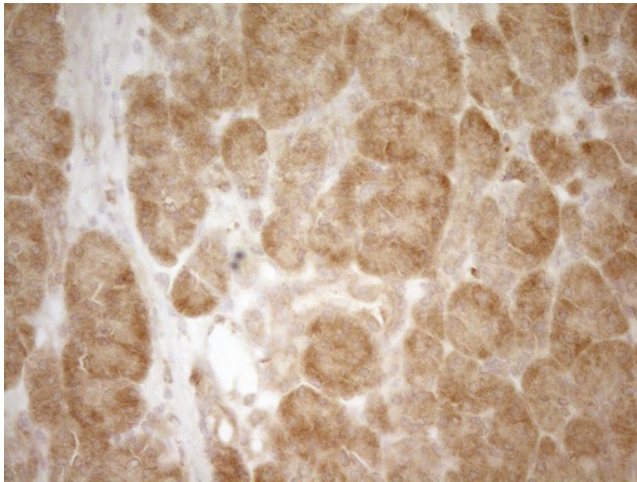
Immunohistochemical staining of paraffin-embedded Human Kidney tissue within the normal limits using anti-GRN mouse monoclonal antibody. (Heat-induced epitope retrieval by 1mM EDTA in 10mM Tris, pH8.5, 120°C for 3min, [TA807476])



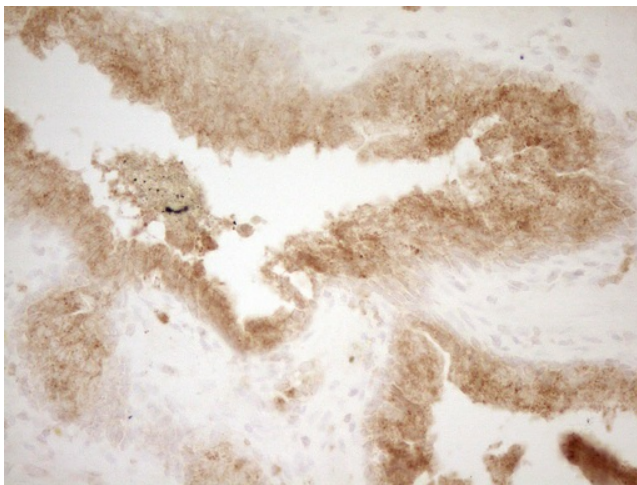
Immunohistochemical staining of paraffin-embedded Carcinoma of Human liver tissue using anti-GRN mouse monoclonal antibody. (Heat-induced epitope retrieval by 1mM EDTA in 10mM Tris, pH8.5, 120°C for 3min, [TA807476])



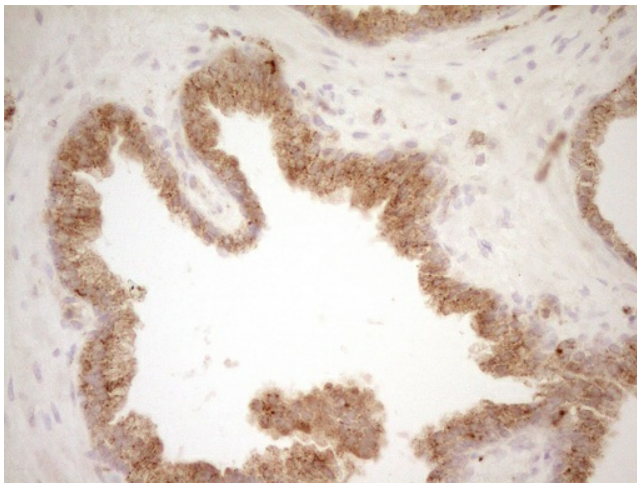
Immunohistochemical staining of paraffin-embedded Adenocarcinoma of Human ovary tissue using anti-GRN mouse monoclonal antibody. (Heat-induced epitope retrieval by 1mM EDTA in 10mM Tris, pH8.5, 120°C for 3min, [TA807476])



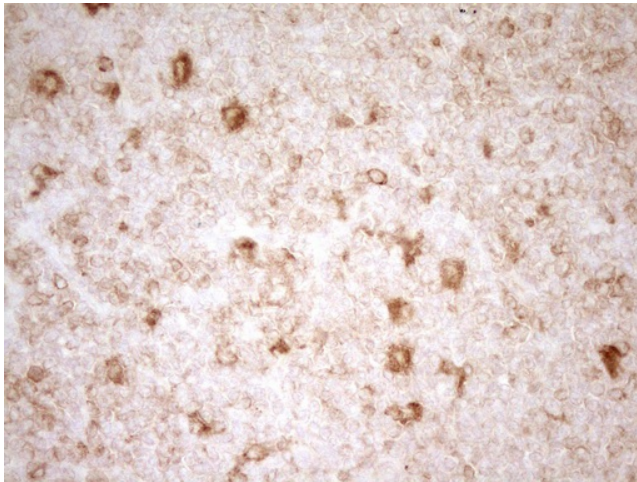
Immunohistochemical staining of paraffin-embedded Human pancreas tissue within the normal limits using anti-GRN mouse monoclonal antibody. (Heat-induced epitope retrieval by 1mM EDTA in 10mM Tris, pH8.5, 120°C for 3min, [TA807476])



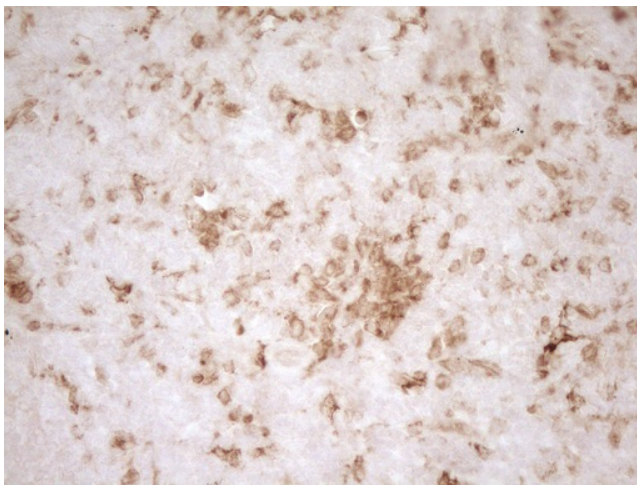
Immunohistochemical staining of paraffin-embedded Adenocarcinoma of Human endometrium tissue using anti-GRN mouse monoclonal antibody. (Heat-induced epitope retrieval by 1mM EDTA in 10mM Tris, pH8.5, 120°C for 3min, [TA807476])



Immunohistochemical staining of paraffin-embedded Carcinoma of Human prostate tissue using anti-GRN mouse monoclonal antibody. (Heat-induced epitope retrieval by 1mM EDTA in 10mM Tris, pH8.5, 120°C for 3min, [TA807476])



Immunohistochemical staining of paraffin-embedded Human lymphoma tissue using anti-GRN mouse monoclonal antibody. (Heat-induced epitope retrieval by 1mM EDTA in 10mM Tris, pH8.5, 120°C for 3min, [TA807476])



Immunohistochemical staining of paraffin-embedded Human tonsil within the normal limits using anti-GRN mouse monoclonal antibody. (Heat-induced epitope retrieval by 1mM EDTA in 10mM Tris, pH8.5, 120°C for 3min, [TA807476])