

Product datasheet for **TA807472M**

IGFBP3 Mouse Monoclonal Antibody [Clone ID: OTI8E11]

Product data:

Product Type:	Primary Antibodies
Clone Name:	OTI8E11
Applications:	WB
Recommended Dilution:	WB 1:2000
Reactivity:	Human
Host:	Mouse
Isotype:	IgG2b
Clonality:	Monoclonal
Immunogen:	Human recombinant protein fragment corresponding to amino acids 28-297 of human IGFBP3(NP_001013416) produced in E.coli.
Formulation:	PBS (pH 7.3) containing 1% BSA, 50% glycerol and 0.02% sodium azide.
Concentration:	1 mg/ml
Purification:	Purified from mouse ascites fluids or tissue culture supernatant by affinity chromatography (protein A/G)
Conjugation:	Unconjugated
Storage:	Store at -20°C as received.
Stability:	Stable for 12 months from date of receipt.
Predicted Protein Size:	29.2 kDa
Gene Name:	insulin like growth factor binding protein 3
Database Link:	NP_001013416 Entrez Gene 3486 Human P17936

[View online »](#)

Background:

This gene is a member of the insulin-like growth factor binding protein (IGFBP) family and encodes a protein with an IGFBP domain and a thyroglobulin type-I domain. The protein forms a ternary complex with insulin-like growth factor acid-labile subunit (IGFALS) and either insulin-like growth factor (IGF) I or II. In this form, it circulates in the plasma, prolonging the half-life of IGFs and altering their interaction with cell surface receptors. Alternate transcriptional splice variants, encoding different isoforms, have been characterized. [provided by RefSeq, Jul 2008]

Synonyms:

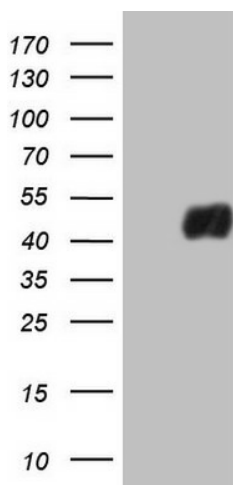
BP-53; IBP3

Protein Families:

Druggable Genome, Secreted Protein

Protein Pathways:

p53 signaling pathway

Product images:


HEK293T cells were transfected with the pCMV6-ENTRY control (Left lane) or pCMV6-ENTRY IGFBP3 ([RC216898], Right lane) cDNA for 48 hrs and lysed. Equivalent amounts of cell lysates (5 ug per lane) were separated by SDS-PAGE and immunoblotted with anti-IGFBP3. Positive lysates [LY422966] (100ug) and [LC422966] (20ug) can be purchased separately from OriGene.