

Product datasheet for **TA807463AM**

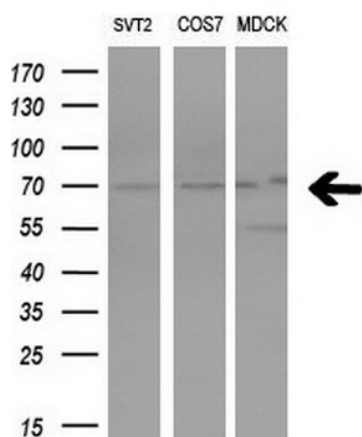
PRMT5 Mouse Monoclonal Antibody (Biotin conjugated) [Clone ID: OTI2C12]

Product data:

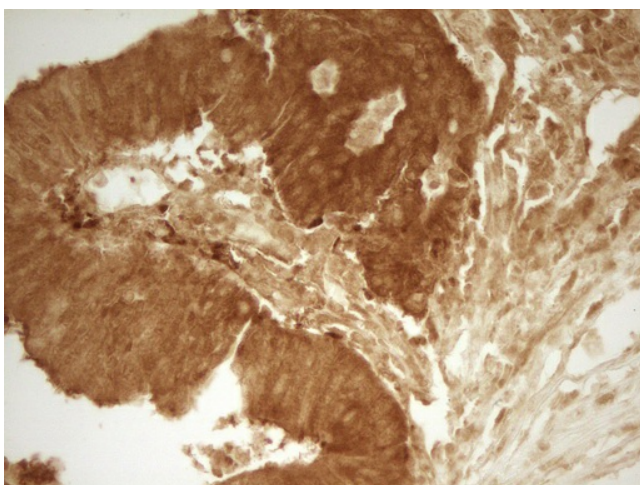
Product Type:	Primary Antibodies
Clone Name:	OTI2C12
Applications:	IHC, WB
Recommended Dilution:	IHC 1:150
Reactivity:	Human, Mouse, Rat
Host:	Mouse
Isotype:	IgG2b
Clonality:	Monoclonal
Immunogen:	Human recombinant protein fragment corresponding to amino acids 238-499 of human PRMT5(NP_006100) produced in E.coli.
Formulation:	PBS (pH 7.3) containing 1% BSA, 50% glycerol and 0.02% sodium azide.
Concentration:	0.5 mg/ml
Purification:	Purified from mouse ascites fluids or tissue culture supernatant by affinity chromatography (protein A/G)
Conjugation:	Biotin
Storage:	Store at -20°C as received.
Stability:	Stable for 12 months from date of receipt.
Predicted Protein Size:	72.5 kDa
Gene Name:	protein arginine methyltransferase 5
Database Link:	NP_006100 Entrez Gene 27374 Mouse Entrez Gene 364382 Rat Entrez Gene 10419 Human O14744
Synonyms:	HRMT1L5; IBP72; JBP1; SKB1; SKB1Hs
Protein Families:	Stem cell - Pluripotency



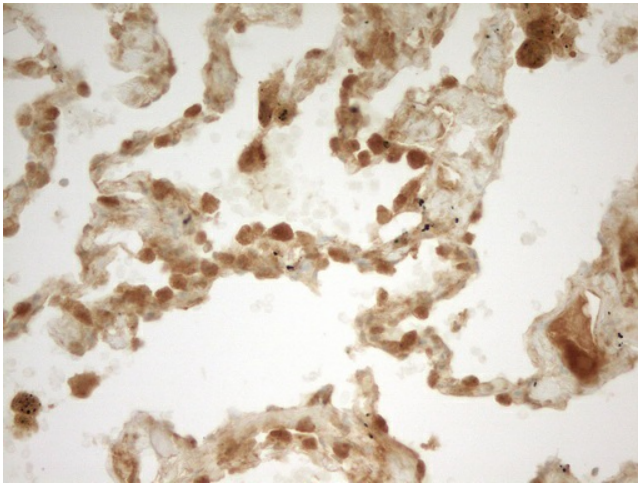
[View online »](#)

Product images:

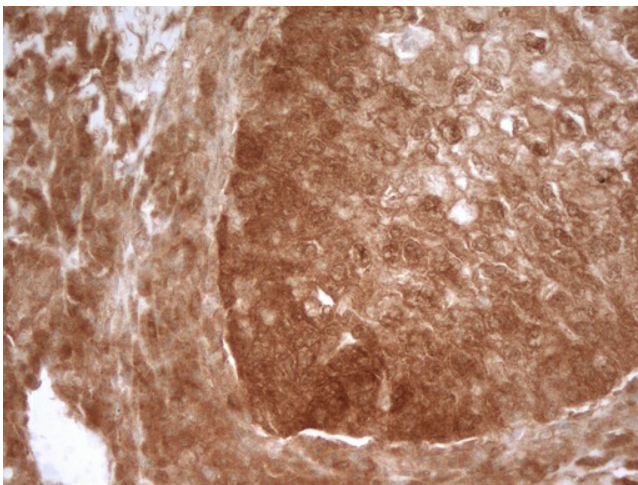
Western blot analysis of extracts (10ug) from 3 different cell lines by using anti-PRMT5 monoclonal antibody (1:200).



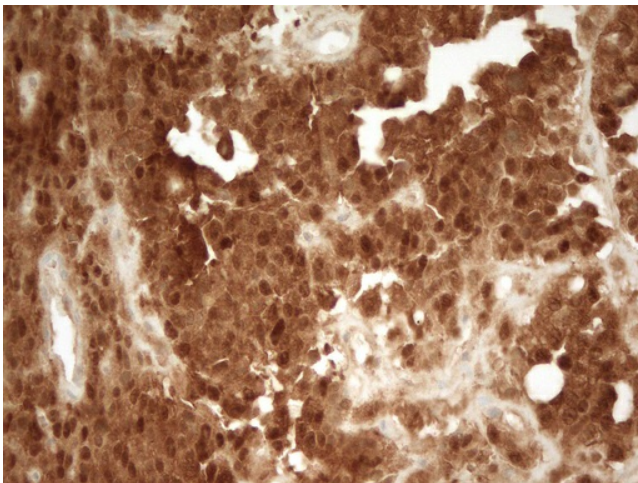
Immunohistochemical staining of paraffin-embedded Human colon tissue within the normal limits using anti-PRMT5 mouse monoclonal antibody. (Heat-induced epitope retrieval by 1mM EDTA in 10mM Tris, pH8.5, 120°C for 3min, [TA807463])



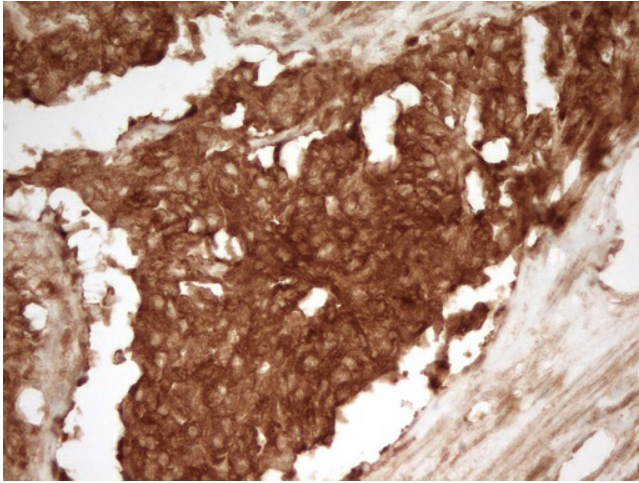
Immunohistochemical staining of paraffin-embedded Human lung tissue within the normal limits using anti-PRMT5 mouse monoclonal antibody. (Heat-induced epitope retrieval by 1mM EDTA in 10mM Tris, pH8.5, 120°C for 3min, [TA807463])



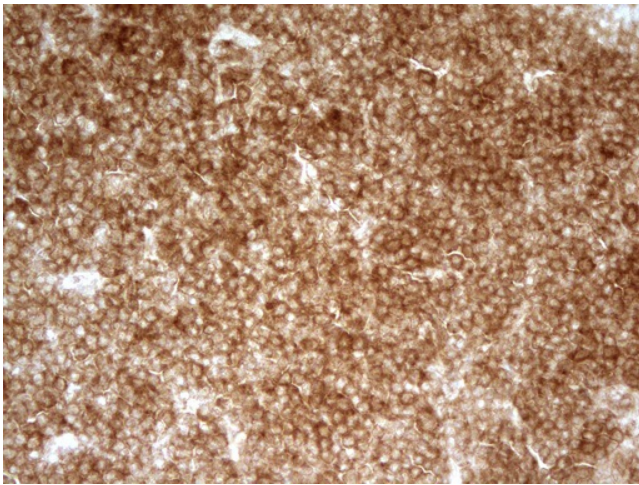
Immunohistochemical staining of paraffin-embedded Carcinoma of Human lung tissue using anti-PRMT5 mouse monoclonal antibody. (Heat-induced epitope retrieval by 1mM EDTA in 10mM Tris, pH8.5, 120°C for 3min, [TA807463])



Immunohistochemical staining of paraffin-embedded Human endometrium tissue within the normal limits using anti-PRMT5 mouse monoclonal antibody. (Heat-induced epitope retrieval by 1mM EDTA in 10mM Tris, pH8.5, 120°C for 3min, [TA807463])



Immunohistochemical staining of paraffin-embedded Adenocarcinoma of Human endometrium tissue using anti-PRMT5 mouse monoclonal antibody. (Heat-induced epitope retrieval by 1mM EDTA in 10mM Tris, pH8.5, 120°C for 3min, [TA807463])



Immunohistochemical staining of paraffin-embedded Human lymphoma tissue using anti-PRMT5 mouse monoclonal antibody. (Heat-induced epitope retrieval by 1mM EDTA in 10mM Tris, pH8.5, 120°C for 3min, [TA807463])