

Product datasheet for **TA807444S**

LOXL2 Mouse Monoclonal Antibody [Clone ID: OTI4H3]

Product data:

Product Type:	Primary Antibodies
Clone Name:	OTI4H3
Applications:	WB
Recommended Dilution:	WB 1:2000
Reactivity:	Human, Mouse, Rat
Host:	Mouse
Isotype:	IgG2b
Clonality:	Monoclonal
Immunogen:	Human recombinant protein fragment corresponding to amino acids 152-450 of human LOXL2(NP_002309) produced in E.coli.
Formulation:	PBS (pH 7.3) containing 1% BSA, 50% glycerol and 0.02% sodium azide.
Concentration:	1 mg/ml
Purification:	Purified from mouse ascites fluids or tissue culture supernatant by affinity chromatography (protein A/G)
Conjugation:	Unconjugated
Storage:	Store at -20°C as received.
Stability:	Stable for 12 months from date of receipt.
Predicted Protein Size:	84 kDa
Gene Name:	lysyl oxidase like 2
Database Link:	NP_002309 Entrez Gene 94352 Mouse Entrez Gene 290350 Rat Entrez Gene 4017 Human Q9Y4K0



[View online »](#)

Background:

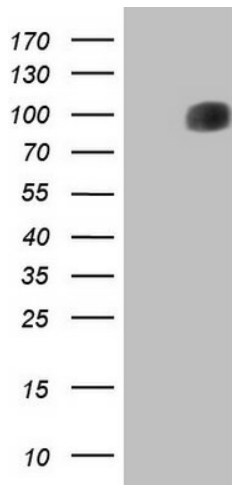
This gene encodes a member of the lysyl oxidase gene family. The prototypic member of the family is essential to the biogenesis of connective tissue, encoding an extracellular copper-dependent amine oxidase that catalyses the first step in the formation of crosslinks in collagens and elastin. A highly conserved amino acid sequence at the C-terminus end appears to be sufficient for amine oxidase activity, suggesting that each family member may retain this function. The N-terminus is poorly conserved and may impart additional roles in developmental regulation, senescence, tumor suppression, cell growth control, and chemotaxis to each member of the family. [provided by RefSeq, Jul 2008]

Synonyms:

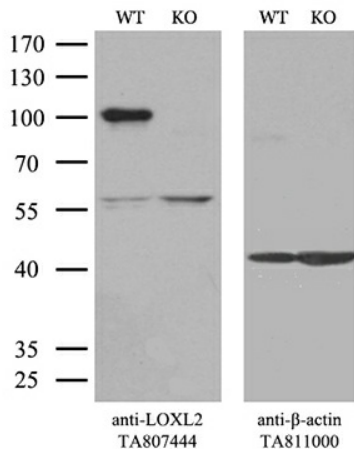
LOR2; WS9-14

Protein Families:

Druggable Genome, Secreted Protein

Product images:


HEK293T cells were transfected with the pCMV6-ENTRY control (Cat# [PS100001], Left lane) or pCMV6-ENTRY LOXL2 (Cat# [RC200455], Right lane) cDNA for 48 hrs and lysed. Equivalent amounts of cell lysates (5 ug per lane) were separated by SDS-PAGE and immunoblotted with anti-LOXL2 (Cat# [TA807444])(1:2000). Positive lysates [LY400844] (100ug) and [LC400844] (20ug) can be purchased separately from OriGene.



Equivalent amounts of cell lysates (10 ug per lane) of wild-type HeLa cells (WT, Cat# LC810HELA) and LOXL2-Knockout HeLa cells (KO, Cat# [LC810132]) were separated by SDS-PAGE and immunoblotted with anti-LOXL2 monoclonal antibody [TA807444]. Then the blotted membrane was stripped and reprobed with anti- β -actin antibody ([TA811000]) as a loading control (1:500).