

Product datasheet for **TA807443S**

LOXL2 Mouse Monoclonal Antibody [Clone ID: OTI8G5]

Product data:

Product Type:	Primary Antibodies
Clone Name:	OTI8G5
Applications:	IHC
Recommended Dilution:	IHC 1:150
Reactivity:	Human, Mouse, Rat
Host:	Mouse
Isotype:	IgG1
Clonality:	Monoclonal
Immunogen:	Human recombinant protein fragment corresponding to amino acids 152-450 of human LOXL2(NP_002309) produced in E.coli.
Formulation:	PBS (pH 7.3) containing 1% BSA, 50% glycerol and 0.02% sodium azide.
Concentration:	1 mg/ml
Purification:	Purified from mouse ascites fluids or tissue culture supernatant by affinity chromatography (protein A/G)
Conjugation:	Unconjugated
Storage:	Store at -20°C as received.
Stability:	Stable for 12 months from date of receipt.
Predicted Protein Size:	84 kDa
Gene Name:	lysyl oxidase like 2
Database Link:	NP_002309 Entrez Gene 94352 Mouse Entrez Gene 290350 Rat Entrez Gene 4017 Human Q9Y4K0



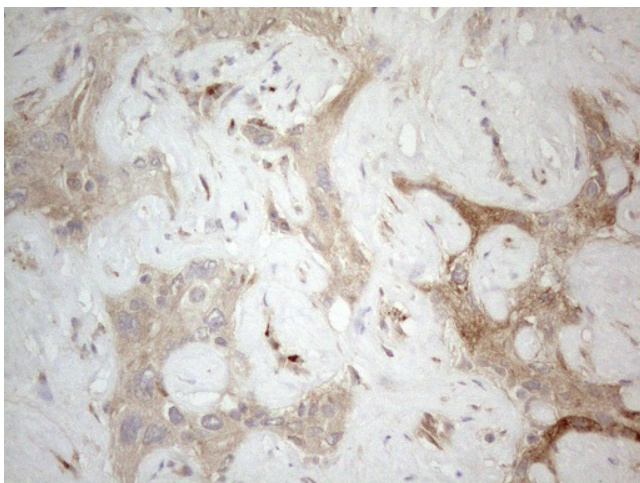
[View online »](#)

Background: This gene encodes a member of the lysyl oxidase gene family. The prototypic member of the family is essential to the biogenesis of connective tissue, encoding an extracellular copper-dependent amine oxidase that catalyses the first step in the formation of crosslinks in collagens and elastin. A highly conserved amino acid sequence at the C-terminus end appears to be sufficient for amine oxidase activity, suggesting that each family member may retain this function. The N-terminus is poorly conserved and may impart additional roles in developmental regulation, senescence, tumor suppression, cell growth control, and chemotaxis to each member of the family. [provided by RefSeq, Jul 2008]

Synonyms: LOR2; WS9-14

Protein Families: Druggable Genome, Secreted Protein

Product images:



Immunohistochemical staining of paraffin-embedded Human liver tissue within the normal limits using anti-LOXL2 mouse monoclonal antibody. (Heat-induced epitope retrieval by 1mM EDTA in 10mM Tris buffer (pH8.5) at 120°C for 3min, [TA807443]) (1:150)