

## Product datasheet for **TA807440BM**

### LOXL2 Mouse Monoclonal Antibody (HRP conjugated) [Clone ID: OTI8B2]

#### Product data:

Product Type:	Primary Antibodies
Clone Name:	OTI8B2
Applications:	IHC
Recommended Dilution:	IHC 1:150
Reactivity:	Human, Mouse, Rat
Host:	Mouse
Isotype:	IgG2a
Clonality:	Monoclonal
Immunogen:	Human recombinant protein fragment corresponding to amino acids 152-450 of human LOXL2(NP_002309) produced in E.coli.
Formulation:	PBS (pH 7.3) containing 1% BSA, 50% glycerol.
Concentration:	0.5 mg/ml
Purification:	Purified from mouse ascites fluids or tissue culture supernatant by affinity chromatography (protein A/G)
Conjugation:	HRP
Storage:	Store at -20°C as received.
Stability:	Stable for 12 months from date of receipt.
Predicted Protein Size:	84 kDa
Gene Name:	lysyl oxidase like 2
Database Link:	<a href="#">NP_002309</a> <a href="#">Entrez Gene 94352 Mouse</a> <a href="#">Entrez Gene 290350 Rat</a> <a href="#">Entrez Gene 4017 Human</a> <a href="#">Q9Y4K0</a>



[View online »](#)

**Background:**

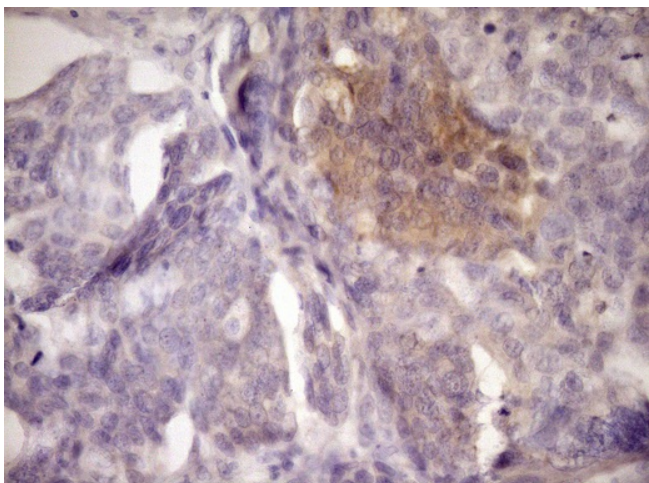
This gene encodes a member of the lysyl oxidase gene family. The prototypic member of the family is essential to the biogenesis of connective tissue, encoding an extracellular copper-dependent amine oxidase that catalyses the first step in the formation of crosslinks in collagens and elastin. A highly conserved amino acid sequence at the C-terminus end appears to be sufficient for amine oxidase activity, suggesting that each family member may retain this function. The N-terminus is poorly conserved and may impart additional roles in developmental regulation, senescence, tumor suppression, cell growth control, and chemotaxis to each member of the family. [provided by RefSeq, Jul 2008]

**Synonyms:**

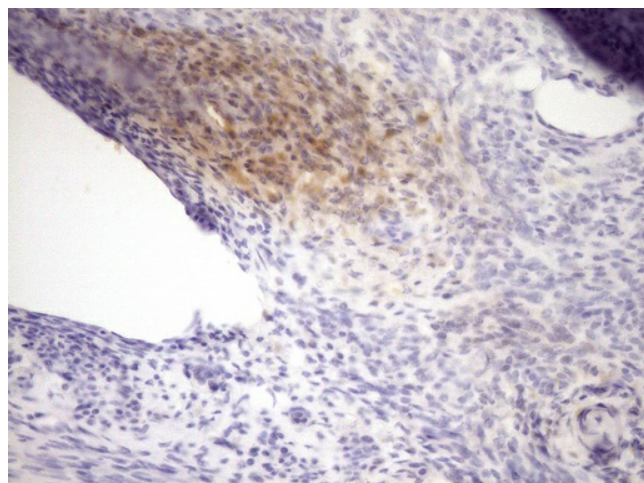
LOR2; WS9-14

**Protein Families:**

Druggable Genome, Secreted Protein

**Product images:**

Immunohistochemical staining of paraffin-embedded Adenocarcinoma of Human ovary tissue using anti-LOXL2 mouse monoclonal antibody. (Heat-induced epitope retrieval by Tris-EDTA, pH8.0, [TA807440]) (1:150)



Immunohistochemical staining of paraffin-embedded Human endometrium tissue within the normal limits using anti-LOXL2 mouse monoclonal antibody. (Heat-induced epitope retrieval by Tris-EDTA, pH8.0, [TA807440]) (1:150)