

## Product datasheet for **TA807434M**

### HSF2 Mouse Monoclonal Antibody [Clone ID: OTI2A7]

#### Product data:

Product Type:	Primary Antibodies
Clone Name:	OTI2A7
Applications:	IHC, WB
Recommended Dilution:	WB 1:2000, IHC 1:150
Reactivity:	Human, Mouse, Rat
Host:	Mouse
Isotype:	IgG1
Clonality:	Monoclonal
Immunogen:	Human recombinant protein fragment corresponding to amino acids 74-324 of human HSF2(NP_004497) produced in E.coli.
Formulation:	PBS (pH 7.3) containing 1% BSA, 50% glycerol and 0.02% sodium azide.
Concentration:	1 mg/ml
Purification:	Purified from mouse ascites fluids or tissue culture supernatant by affinity chromatography (protein A/G)
Conjugation:	Unconjugated
Storage:	Store at -20°C as received.
Stability:	Stable for 12 months from date of receipt.
Predicted Protein Size:	60.2 kDa
Gene Name:	heat shock transcription factor 2
Database Link:	<a href="#">NP_004497</a> <a href="#">Entrez Gene 15500 Mouse</a> <a href="#">Entrez Gene 64441 Rat</a> <a href="#">Entrez Gene 3298 Human</a> <a href="#">Q03933</a>
Background:	The protein encoded by this gene belongs to the HSF family of transcription factors that bind specifically to the heat-shock promoter element and activate transcription. Heat shock transcription factors activate heat-shock response genes under conditions of heat or other stresses. Alternatively spliced transcript variants encoding different isoforms have been found for this gene. [provided by RefSeq, Jul 2011]

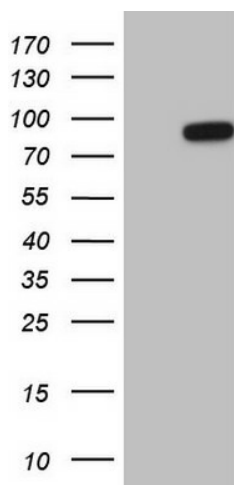


[View online »](#)

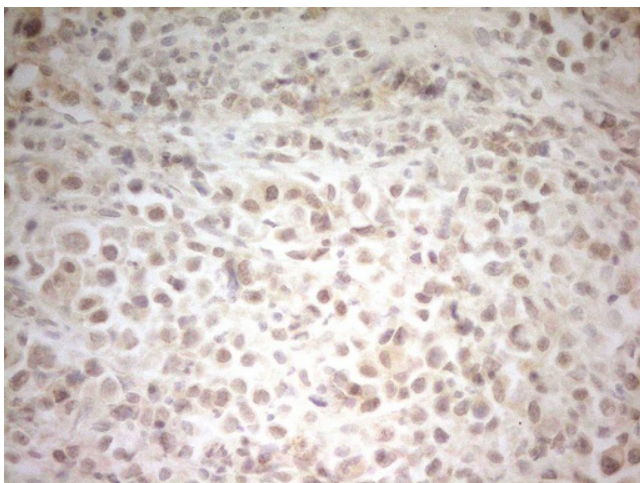
**Synonyms:** HSF 2; HSTF 2

**Protein Families:** Transcription Factors

**Product images:**



HEK293T cells were transfected with the pCMV6-ENTRY control (Left lane) or pCMV6-ENTRY HSF2 ([RC210751], Right lane) cDNA for 48 hrs and lysed. Equivalent amounts of cell lysates (5 ug per lane) were separated by SDS-PAGE and immunoblotted with anti-HSF2. Positive lysates [LY401434] (100ug) and [LC401434] (20ug) can be purchased separately from OriGene.



Immunohistochemical staining of paraffin-embedded Human bladder tissue within the normal limits using anti-HSF2 mouse monoclonal antibody. Heat-induced epitope retrieval by EDTA solution buffer pH 8.0 at 120°C for 3 min.