

Product datasheet for **TA807421BM**

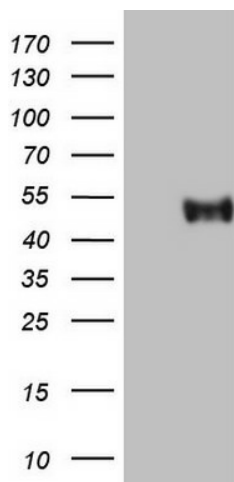
SLAMF7 Mouse Monoclonal Antibody (HRP conjugated) [Clone ID: OTI1F1]

Product data:

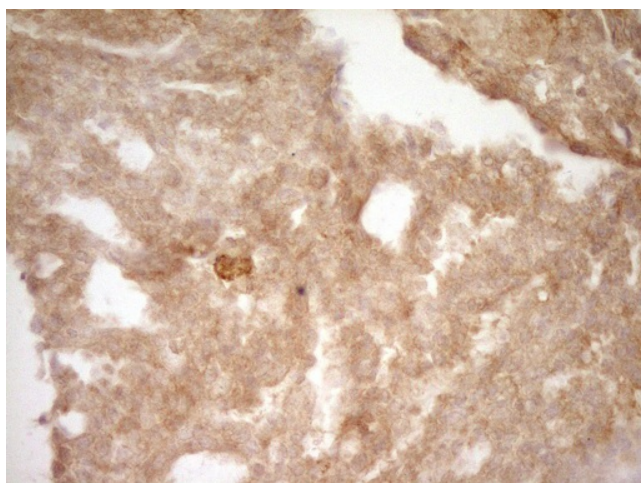
Product Type:	Primary Antibodies
Clone Name:	OTI1F1
Applications:	FC, IHC, WB
Recommended Dilution:	WB 1:2000, IHC 1:150
Reactivity:	Human
Host:	Mouse
Isotype:	IgG1
Clonality:	Monoclonal
Immunogen:	Full length human recombinant protein of human SLAMF7 (NP_067004) produced in HEK293T cell.
Formulation:	PBS (pH 7.3) containing 1% BSA, 50% glycerol.
Concentration:	0.5 mg/ml
Purification:	Purified from mouse ascites fluids or tissue culture supernatant by affinity chromatography (protein A/G)
Conjugation:	HRP
Storage:	Store at -20°C as received.
Stability:	Stable for 12 months from date of receipt.
Predicted Protein Size:	37.2 kDa
Gene Name:	SLAM family member 7
Database Link:	NP_067004 Entrez Gene 57823 Human Q9NQ25
Synonyms:	19A; CD319; CRACC; CS1
Protein Families:	Druggable Genome, Transmembrane



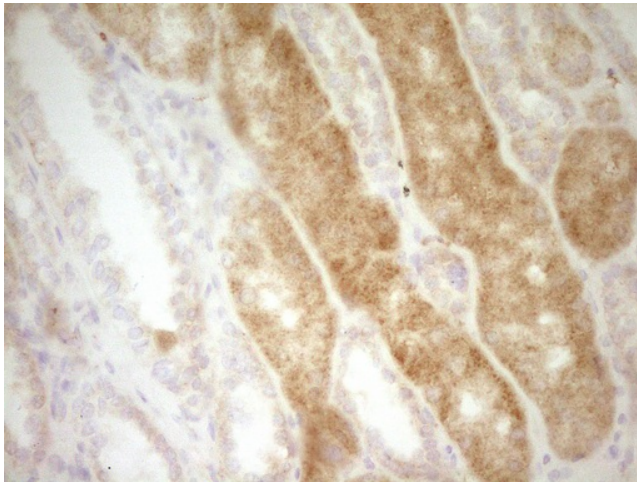
[View online »](#)

Product images:

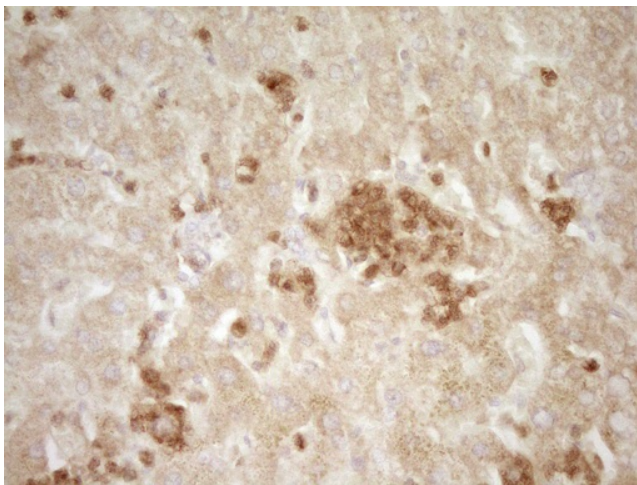
HEK293T cells were transfected with the pCMV6-ENTRY control (Left lane) or pCMV6-ENTRY SLAMF7 ([RC220985], Right lane) cDNA for 48 hrs and lysed. Equivalent amounts of cell lysates (5 ug per lane) were separated by SDS-PAGE and immunoblotted with anti-SLAMF7. Positive lysates [LY402852] (100ug) and [LC402852] (20ug) can be purchased separately from OriGene.



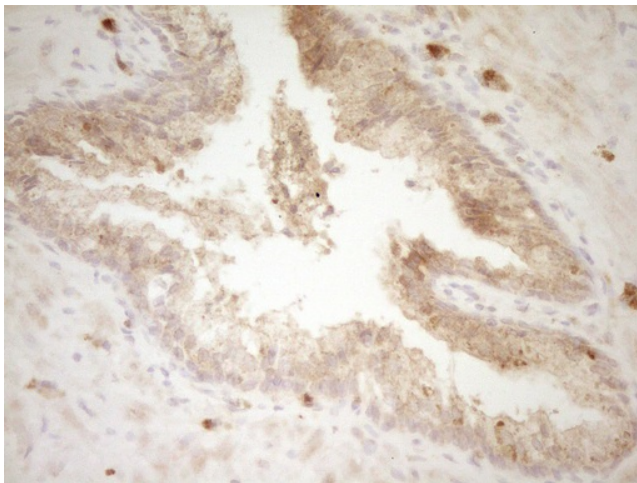
Immunohistochemical staining of paraffin-embedded Adenocarcinoma of Human breast tissue using anti-SLAMF7 mouse monoclonal antibody. (Heat-induced epitope retrieval by 1mM EDTA in 10mM Tris, pH8.5, 120°C for 3min, [TA807421])



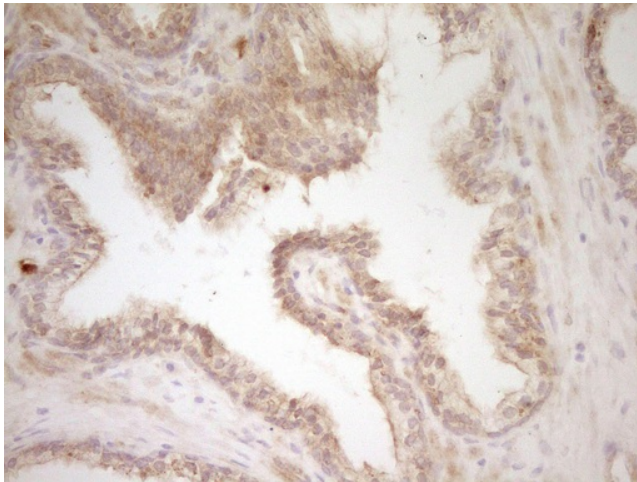
Immunohistochemical staining of paraffin-embedded Human Kidney tissue within the normal limits using anti-SLAMF7 mouse monoclonal antibody. (Heat-induced epitope retrieval by 1mM EDTA in 10mM Tris, pH8.5, 120°C for 3min, [TA807421])



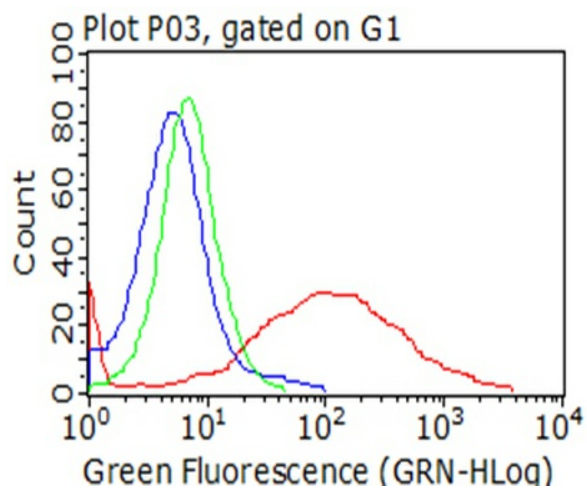
Immunohistochemical staining of paraffin-embedded Human liver tissue within the normal limits using anti-SLAMF7 mouse monoclonal antibody. (Heat-induced epitope retrieval by 1mM EDTA in 10mM Tris, pH8.5, 120°C for 3min, [TA807421])



Immunohistochemical staining of paraffin-embedded Adenocarcinoma of Human endometrium tissue using anti-SLAMF7 mouse monoclonal antibody. (Heat-induced epitope retrieval by 1mM EDTA in 10mM Tris, pH8.5, 120°C for 3min, [TA807421])



Immunohistochemical staining of paraffin-embedded Carcinoma of Human prostate tissue using anti-SLAMF7 mouse monoclonal antibody. (Heat-induced epitope retrieval by 1mM EDTA in 10mM Tris, pH8.5, 120°C for 3min, [TA807421])



Flow cytometric analysis of living 293T cells transfected with SLAMF7 overexpression plasmid ([RC220985], Red)/empty vector ([PS100001], Blue) using anti-SLAMF7 antibody ([TA807421]). Cells incubated with a non-specific antibody (Green) were used as isotype control (1:100).