

Product datasheet for **TA807412BM**

SLAMF7 Mouse Monoclonal Antibody (HRP conjugated) [Clone ID: OTI3E3]

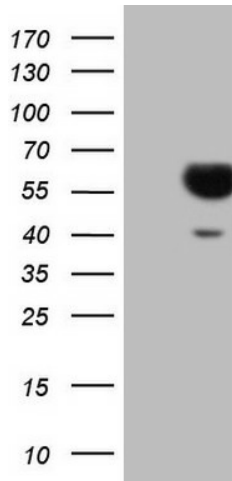
Product data:

Product Type:	Primary Antibodies
Clone Name:	OTI3E3
Applications:	FC, WB
Recommended Dilution:	WB 1:2000
Reactivity:	Human
Host:	Mouse
Isotype:	IgG1
Clonality:	Monoclonal
Immunogen:	Full length human recombinant protein of human SLAMF7 (NP_067004) produced in HEK293T cell.
Formulation:	PBS (pH 7.3) containing 1% BSA, 50% glycerol.
Concentration:	0.5 mg/ml
Purification:	Purified from mouse ascites fluids or tissue culture supernatant by affinity chromatography (protein A/G)
Conjugation:	HRP
Storage:	Store at -20°C as received.
Stability:	Stable for 12 months from date of receipt.
Predicted Protein Size:	37.2 kDa
Gene Name:	SLAM family member 7
Database Link:	NP_067004 Entrez Gene 57823 Human Q9NQ25
Synonyms:	19A; CD319; CRACC; CS1
Protein Families:	Druggable Genome, Transmembrane

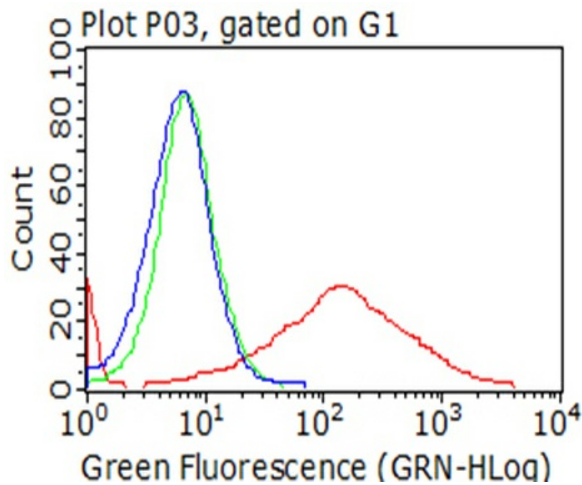


[View online »](#)

Product images:



HEK293T cells were transfected with the pCMV6-ENTRY control (Left lane) or pCMV6-ENTRY SLAMF7 ([RC220985], Right lane) cDNA for 48 hrs and lysed. Equivalent amounts of cell lysates (5 ug per lane) were separated by SDS-PAGE and immunoblotted with anti-SLAMF7 (1:2000). Positive lysates [LY402852] (100ug) and [LC402852] (20ug) can be purchased separately from OriGene.



Flow cytometric analysis of living 293T cells transfected with SLAMF7 overexpression plasmid ([RC220985], Red)/empty vector ([PS100001], Blue) using anti-SLAMF7 antibody ([TA807412]). Cells incubated with a non-specific antibody (Green) were used as isotype control (1:100).