

Product datasheet for **TA807410**

Activin Receptor Type IIA (ACVR2A) Mouse Monoclonal Antibody [Clone ID: OTI5D1]

Product data:

Product Type:	Primary Antibodies
Clone Name:	OTI5D1
Applications:	IHC, WB
Recommended Dilution:	WB 1:200~500, IHC 1:150
Reactivity:	Human, Mouse, Rat
Host:	Mouse
Isotype:	IgG1
Clonality:	Monoclonal
Immunogen:	Human recombinant protein fragment corresponding to amino acids 214-513 of human ACVR2A(NP_001607) produced in E.coli.
Formulation:	PBS (pH 7.3) containing 1% BSA, 50% glycerol and 0.02% sodium azide.
Concentration:	1 mg/ml
Purification:	Purified from mouse ascites fluids or tissue culture supernatant by affinity chromatography (protein A/G)
Conjugation:	Unconjugated
Storage:	Store at -20°C as received.
Stability:	Stable for 12 months from date of receipt.
Gene Name:	activin A receptor type 2A
Database Link:	NP_001607 Entrez Gene 11480 Mouse Entrez Gene 29263 Rat Entrez Gene 92 Human P27037



[View online »](#)

Background:

This gene encodes a receptor that mediates the functions of activins, which are members of the transforming growth factor-beta (TGF-beta) superfamily involved in diverse biological processes. The encoded protein is a transmembrane serine-threonine kinase receptor which mediates signaling by forming heterodimeric complexes with various combinations of type I and type II receptors and ligands in a cell-specific manner. The encoded type II receptor is primarily involved in ligand-binding and includes an extracellular ligand-binding domain, a transmembrane domain and a cytoplasmic serine-threonine kinase domain. This gene may be associated with susceptibility to preeclampsia, a pregnancy-related disease which can result in maternal and fetal morbidity and mortality. Alternative splicing results in multiple transcript variants of this gene. [provided by RefSeq, Jun 2013]

Synonyms:

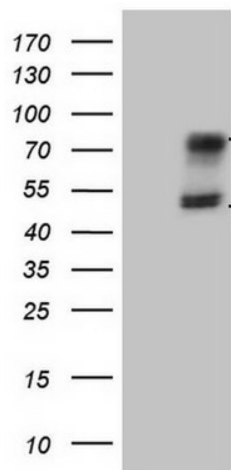
ACTRII; ACVR2

Protein Families:

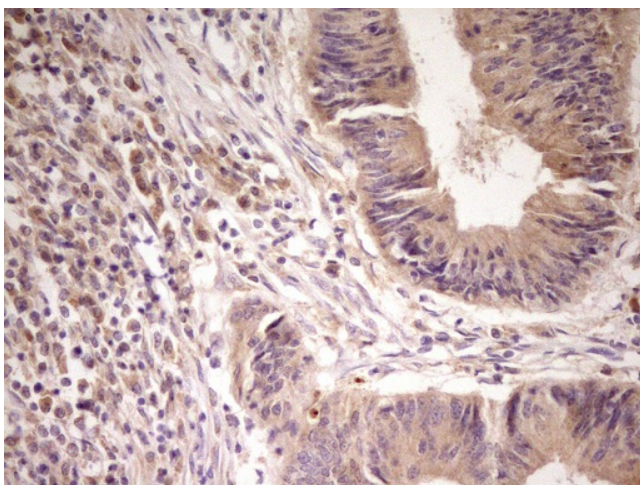
Druggable Genome, Protein Kinase, Transmembrane

Protein Pathways:

Cytokine-cytokine receptor interaction, TGF-beta signaling pathway

Product images:

HEK293T cells were transfected with the pCMV6-ENTRY control (Left lane) or pCMV6-ENTRY ACVR2A ([RC210227], Right lane) cDNA for 48 hrs and lysed. Equivalent amounts of cell lysates (5 ug per lane) were separated by SDS-PAGE and immunoblotted with anti-ACVR2A. Positive lysates [LY419844] (100ug) and [LC419844] (20ug) can be purchased separately from OriGene.



Immunohistochemical staining of paraffin-embedded Adenocarcinoma of Human colon tissue using anti-ACVR2A mouse monoclonal antibody. (Heat-induced epitope retrieval by 1mM EDTA in 10mM Tris, pH8.5, 120°C for 3min, TA807410)