

Product datasheet for **TA807397**

CD13 (ANPEP) Mouse Monoclonal Antibody [Clone ID: OTI3F8]

Product data:

Product Type:	Primary Antibodies
Clone Name:	OTI3F8
Applications:	IHC, WB
Recommended Dilution:	WB 1:200~2000, IHC 1:150
Reactivity:	Human
Host:	Mouse
Isotype:	IgG2a
Clonality:	Monoclonal
Immunogen:	Human recombinant protein fragment corresponding to amino acids 668-967 of human ANPEP (NP_001141) produced in E.coli.
Formulation:	PBS (pH 7.3) containing 1% BSA, 50% glycerol and 0.02% sodium azide.
Concentration:	1 mg/ml
Purification:	Purified from mouse ascites fluids or tissue culture supernatant by affinity chromatography (protein A/G)
Conjugation:	Unconjugated
Storage:	Store at -20°C as received.
Stability:	Stable for 12 months from date of receipt.
Gene Name:	alanyl aminopeptidase, membrane
Database Link:	NP_001141 Entrez Gene 290 Human P15144



[View online »](#)

Background:

Aminopeptidase N is located in the small-intestinal and renal microvillar membrane, and also in other plasma membranes. In the small intestine aminopeptidase N plays a role in the final digestion of peptides generated from hydrolysis of proteins by gastric and pancreatic proteases. Its function in proximal tubular epithelial cells and other cell types is less clear. The large extracellular carboxyterminal domain contains a pentapeptide consensus sequence characteristic of members of the zinc-binding metalloproteinase superfamily. Sequence comparisons with known enzymes of this class showed that CD13 and aminopeptidase N are identical. The latter enzyme was thought to be involved in the metabolism of regulatory peptides by diverse cell types, including small intestinal and renal tubular epithelial cells, macrophages, granulocytes, and synaptic membranes from the CNS. Human aminopeptidase N is a receptor for one strain of human coronavirus that is an important cause of upper respiratory tract infections. Defects in this gene appear to be a cause of various types of leukemia or lymphoma. [provided by RefSeq, Jul 2008]

Synonyms:

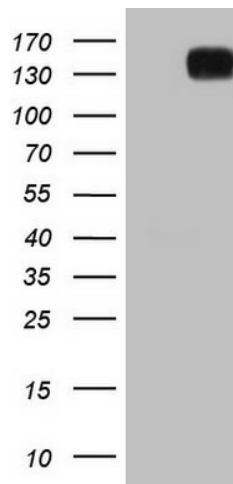
APN; CD13; GP150; LAP1; P150; PEPN

Protein Families:

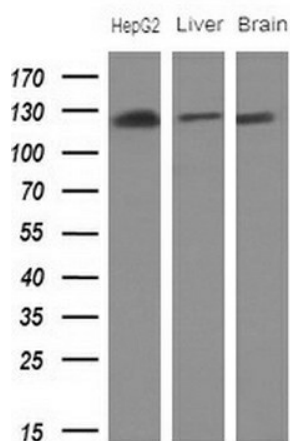
Druggable Genome, ES Cell Differentiation/IPS, Protease, Transmembrane

Protein Pathways:

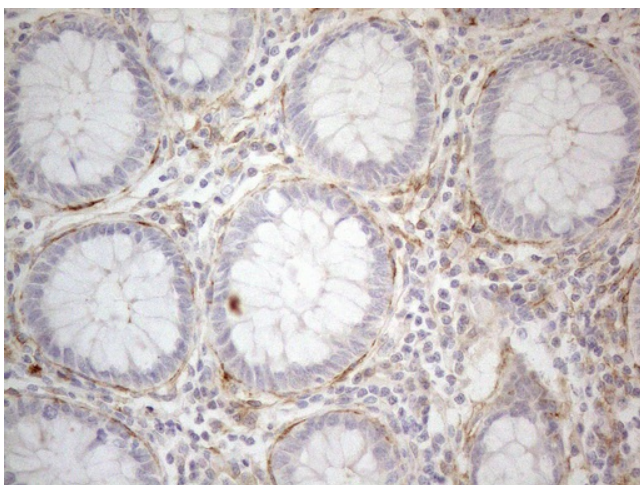
Glutathione metabolism, Hematopoietic cell lineage, Metabolic pathways, Renin-angiotensin system

Product images:

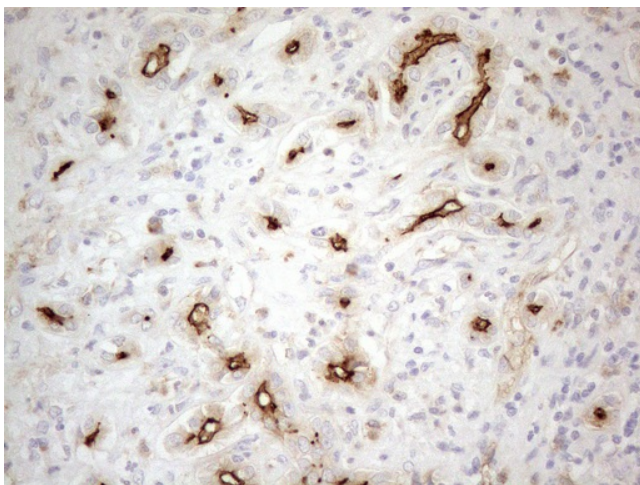
HEK293T cells were transfected with the pCMV6-ENTRY control (Left lane) or pCMV6-ENTRY ANPEP ([RC208950], Right lane) cDNA for 48 hrs and lysed. Equivalent amounts of cell lysates (5 ug per lane) were separated by SDS-PAGE and immunoblotted with anti-ANPEP.



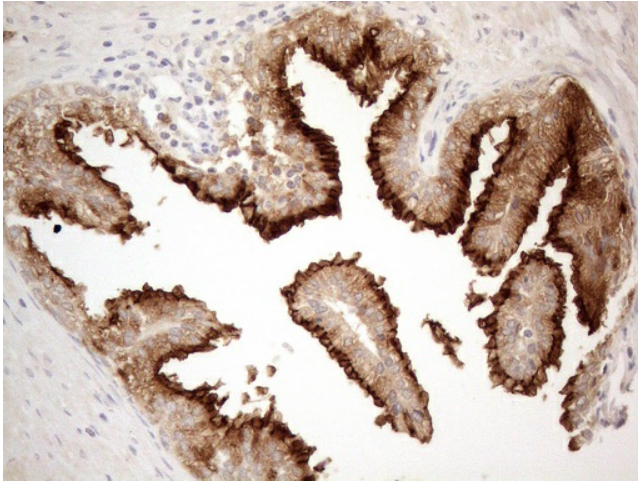
Western blot analysis of extracts (10ug) from 1 cell lines and 2 human tissue by using anti-ANPEP monoclonal antibody (1:200).



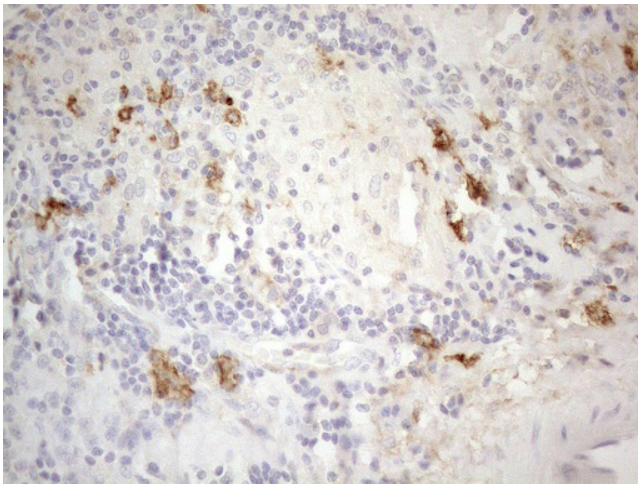
Immunohistochemical staining of paraffin-embedded Human colon tissue using anti-ANPEP mouse monoclonal antibody. (Heat-induced epitope retrieval by 1mM EDTA in 10mM Tris buffer (pH8.5) at 120°C for 3min, TA807397) (1:150)



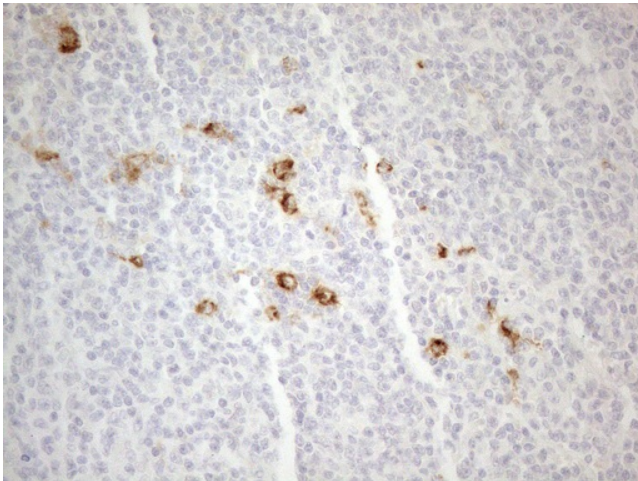
Immunohistochemical staining of paraffin-embedded Carcinoma of Human liver tissue using anti-ANPEP mouse monoclonal antibody. (Heat-induced epitope retrieval by 1mM EDTA in 10mM Tris buffer (pH8.5) at 120°C for 3min, TA807397) (1:150)



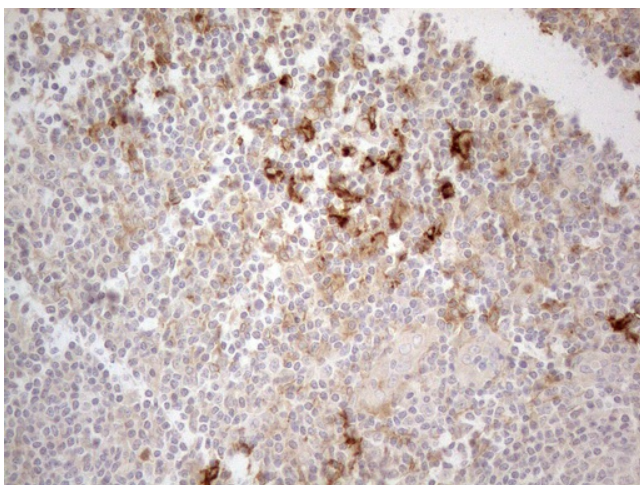
Immunohistochemical staining of paraffin-embedded Human prostate tissue using anti-ANPEP mouse monoclonal antibody. (Heat-induced epitope retrieval by 1mM EDTA in 10mM Tris buffer (pH8.5) at 120°C for 3min, TA807397) (1:150)



Immunohistochemical staining of paraffin-embedded Human lymph node tissue using anti-ANPEP mouse monoclonal antibody. (Heat-induced epitope retrieval by 1mM EDTA in 10mM Tris buffer (pH8.5) at 120°C for 3min, TA807397) (1:150)



Immunohistochemical staining of paraffin-embedded Human lymphoma tissue using anti-ANPEP mouse monoclonal antibody. (Heat-induced epitope retrieval by 1mM EDTA in 10mM Tris buffer (pH8.5) at 120°C for 3min, TA807397) (1:150)



Immunohistochemical staining of paraffin-embedded Human tonsil using anti-ANPEP mouse monoclonal antibody. (Heat-induced epitope retrieval by 1mM EDTA in 10mM Tris buffer (pH8.5) at 120°C for 3min, TA807397) (1:150)