

## Product datasheet for **TA807388BM**

### IL23 Receptor (IL23R) Mouse Monoclonal Antibody (HRP conjugated) [Clone ID: OTI5C4]

#### Product data:

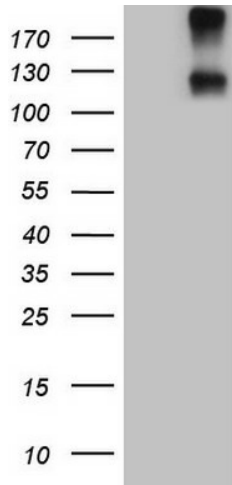
Product Type:	Primary Antibodies
Clone Name:	OTI5C4
Applications:	WB
Recommended Dilution:	WB 1:500
Reactivity:	Human
Host:	Mouse
Isotype:	IgG2a
Clonality:	Monoclonal
Immunogen:	Human recombinant protein fragment corresponding to amino acids 57-355 of human IL23R(NP_653302) produced in E.coli.
Formulation:	PBS (pH 7.3) containing 1% BSA, 50% glycerol.
Concentration:	0.5 mg/ml
Purification:	Purified from mouse ascites fluids or tissue culture supernatant by affinity chromatography (protein A/G)
Conjugation:	HRP
Storage:	Store at -20°C as received.
Stability:	Stable for 12 months from date of receipt.
Gene Name:	interleukin 23 receptor
Database Link:	<a href="#">NP_653302</a> <a href="#">Entrez Gene 149233 Human</a> <a href="#">Q5VWK5</a>
Background:	The protein encoded by this gene is a subunit of the receptor for IL23A/IL23. This protein pairs with the receptor molecule IL12RB1/IL12Rbeta1, and both are required for IL23A signaling. This protein associates constitutively with Janus kinase 2 (JAK2), and also binds to transcription activator STAT3 in a ligand-dependent manner. [provided by RefSeq, Jul 2008]
Synonyms:	interleukin 23 receptor; OTTHUMP00000010660
Protein Families:	Druggable Genome, Transmembrane



[View online »](#)

**Protein Pathways:** Cytokine-cytokine receptor interaction, Jak-STAT signaling pathway

**Product images:**



HEK293T cells were transfected with the pCMV6-ENTRY control (Left lane) or pCMV6-ENTRY IL23R ([RC211477], Right lane) cDNA for 48 hrs and lysed. Equivalent amounts of cell lysates (5 ug per lane) were separated by SDS-PAGE and immunoblotted with anti-IL23R (1:500). Positive lysates [LY403404] (100ug) and [LC403404] (20ug) can be purchased separately from OriGene.