

## Product datasheet for **TA807385BM**

### SSX2IP Mouse Monoclonal Antibody (HRP conjugated) [Clone ID: OTI1B6]

#### Product data:

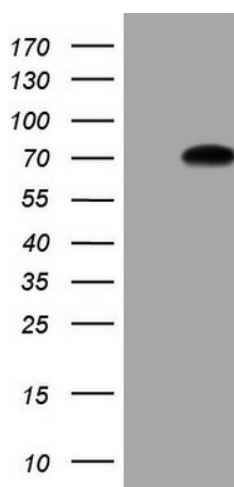
Product Type:	Primary Antibodies
Clone Name:	OTI1B6
Applications:	WB
Recommended Dilution:	WB 1:2000
Reactivity:	Human, Mouse, Rat
Host:	Mouse
Isotype:	IgG1
Clonality:	Monoclonal
Immunogen:	Human recombinant protein fragment corresponding to amino acids 1-272 of human SSX2IP(NP_054740) produced in E.coli.
Formulation:	PBS (pH 7.3) containing 1% BSA, 50% glycerol.
Concentration:	0.5 mg/ml
Purification:	Purified from mouse ascites fluids or tissue culture supernatant by affinity chromatography (protein A/G)
Conjugation:	HRP
Storage:	Store at -20°C as received.
Stability:	Stable for 12 months from date of receipt.
Predicted Protein Size:	71.1 kDa
Gene Name:	SSX family member 2 interacting protein
Database Link:	<a href="#">NP_054740</a> <a href="#">Entrez Gene 308023 Rat</a> <a href="#">Entrez Gene 117178 Human</a> <a href="#">Q9Y2D8</a>
Background:	This gene encodes a protein that binds the cancer-testis antigen Synovial Sarcoma X breakpoint 2 protein. The encoded protein may regulate the activity of Synovial Sarcoma X breakpoint 2 protein in malignant cells. Alternate splicing results in multiple transcript variants. A pseudogene of this gene is found on chromosome 3. [provided by RefSeq, Oct 2009]



[View online »](#)

Synonyms: ADIP; hMsd1  
Protein Pathways: Adherens junction

### Product images:



HEK293T cells were transfected with the pCMV6-ENTRY control (Left lane) or pCMV6-ENTRY SSX2IP ([RC207526], Right lane) cDNA for 48 hrs and lysed. Equivalent amounts of cell lysates (5 ug per lane) were separated by SDS-PAGE and immunoblotted with anti-SSX2IP (1:2000). Positive lysates [LY415525] (100ug) and [LC415525] (20ug) can be purchased separately from OriGene.