

## Product datasheet for **TA807375AM**

### **KCHIP2 (KCNIP2) Mouse Monoclonal Antibody (Biotin conjugated) [Clone ID: OTI2D2]**

#### **Product data:**

Product Type:	Primary Antibodies
Clone Name:	OTI2D2
Applications:	WB
Recommended Dilution:	WB 1:2000
Reactivity:	Human, Mouse, Rat
Host:	Mouse
Isotype:	IgG1
Clonality:	Monoclonal
Immunogen:	Full length human recombinant protein of human KCNIP2 (NP_775284) produced in E.coli.
Formulation:	PBS (pH 7.3) containing 1% BSA, 50% glycerol and 0.02% sodium azide.
Concentration:	0.5 mg/ml
Purification:	Purified from mouse ascites fluids or tissue culture supernatant by affinity chromatography (protein A/G)
Conjugation:	Biotin
Storage:	Store at -20°C as received.
Stability:	Stable for 12 months from date of receipt.
Predicted Protein Size:	28.8 kDa
Gene Name:	potassium voltage-gated channel interacting protein 2
Database Link:	<a href="#">NP_775284</a> <a href="#">Entrez Gene 56817 Rat</a> <a href="#">Entrez Gene 80906 Mouse</a> <a href="#">Entrez Gene 30819 Human</a> <a href="#">Q9NS61</a>



[View online »](#)

**Background:**

This gene encodes a member of the family of voltage-gated potassium (Kv) channel-interacting proteins (KCNIPs), which belongs to the recoverin branch of the EF-hand superfamily. Members of the KCNIP family are small calcium binding proteins. They all have EF-hand-like domains, and differ from each other in the N-terminus. They are integral subunit components of native Kv4 channel complexes. They may regulate A-type currents, and hence neuronal excitability, in response to changes in intracellular calcium. Multiple alternatively spliced transcript variants encoding distinct isoforms have been identified from this gene. [provided by RefSeq, Jul 2008]

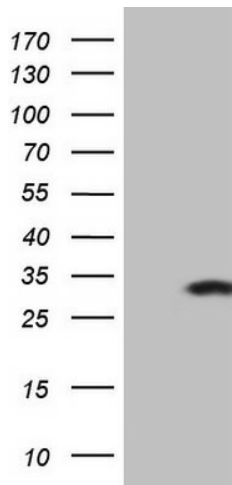
**Synonyms:**

KCHIP2

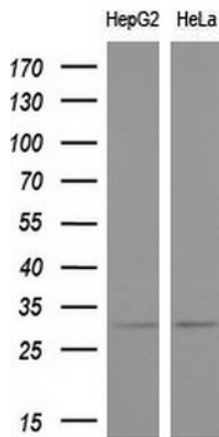
**Protein Families:**

Druggable Genome, Ion Channels: Other

**Product images:**



HEK293T cells were transfected with the pCMV6-ENTRY control (Cat# [PS100001], Left lane) or pCMV6-ENTRY KCNIP2 (Cat# [RC203823], Right lane) cDNA for 48 hrs and lysed. Equivalent amounts of cell lysates (5 ug per lane) were separated by SDS-PAGE and immunoblotted with anti-KCNIP2(Cat# [TA807375]). Positive lysates [LY406638] (100ug) and [LC406638] (20ug) can be purchased separately from OriGene.



Western blot analysis of extracts (10ug) from 2 different cell lines by using anti-KCNIP2 monoclonal antibody (1:200).