

## Product datasheet for **TA807357M**

### Granulin (GRN) Mouse Monoclonal Antibody [Clone ID: OTI2D1]

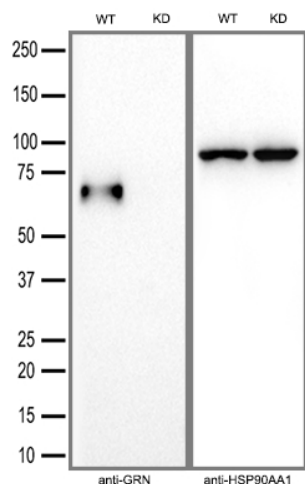
#### Product data:

Product Type:	Primary Antibodies
Clone Name:	OTI2D1
Applications:	IHC, WB
Recommended Dilution:	WB 1:500, IHC 1:500
Reactivity:	Human
Host:	Mouse
Isotype:	IgG1
Clonality:	Monoclonal
Immunogen:	Human recombinant protein fragment corresponding to amino acids 327-593 of human GRN(NP_002078) produced in E.coli.
Formulation:	PBS (pH 7.3) containing 1% BSA, 50% glycerol and 0.02% sodium azide.
Concentration:	1 mg/ml
Purification:	Purified from mouse ascites fluids or tissue culture supernatant by affinity chromatography (protein A/G)
Conjugation:	Unconjugated
Storage:	Store at -20°C as received.
Stability:	Stable for 12 months from date of receipt.
Predicted Protein Size:	63.54 kDa
Gene Name:	granulin
Database Link:	<a href="#">NP_002078</a> <a href="#">Entrez Gene 2896 Human</a> <a href="#">P28799</a>
Synonyms:	CLN11; GEP; GP88; PCDGF; PEPI; PGRN
Protein Families:	Druggable Genome, Secreted Protein

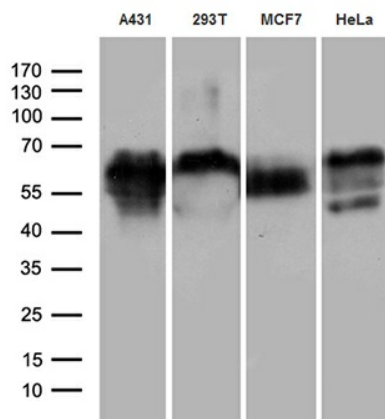


[View online »](#)

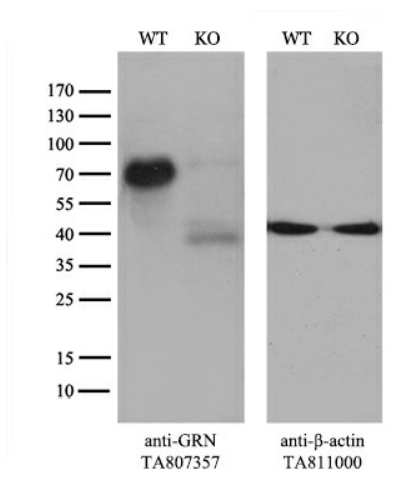
## Product images:



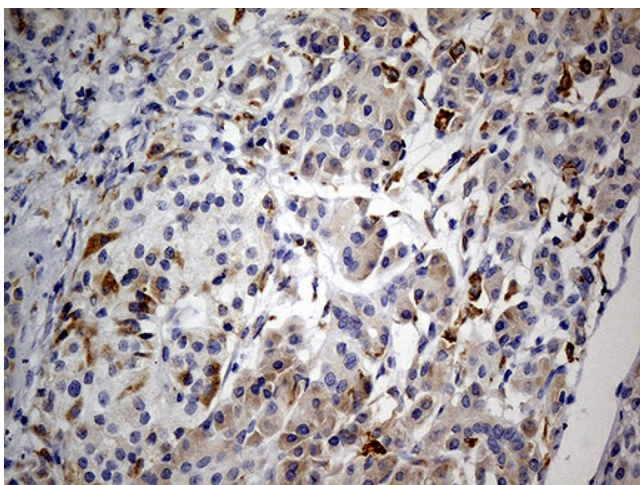
Equivalent amounts of cell lysates (30 ug per lane) of wild-type HeLa cells (WT) and GRN-Knockdown HeLa cells (KD) were separated by SDS-PAGE and immunoblotted with anti-GRN monoclonal antibody [TA807357] (1:2500). Then the blotted membrane was stripped and reprobed with anti-HSP90AA1 antibody as a loading control.



Western blot analysis of extracts (35ug) from 4 different cell lines by using anti-GRN monoclonal antibody (1:500).



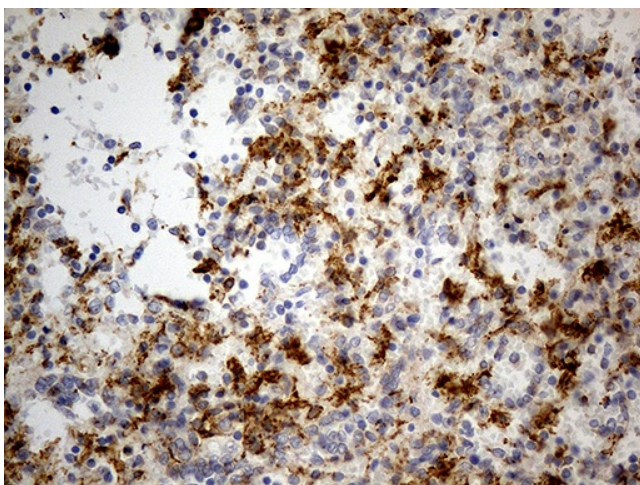
Equivalent amounts of cell lysates (10 ug per lane) of wild-type 293T cells (WT, Cat# LC810293T) and GRN-Knockout 293T cells (KO, Cat# [LC811733]) were separated by SDS-PAGE and immunoblotted with anti-GRN monoclonal antibody [TA807357], (1:100). Then the blotted membrane was stripped and reprobed with anti-β-actin antibody ([TA811000]) as a loading control.



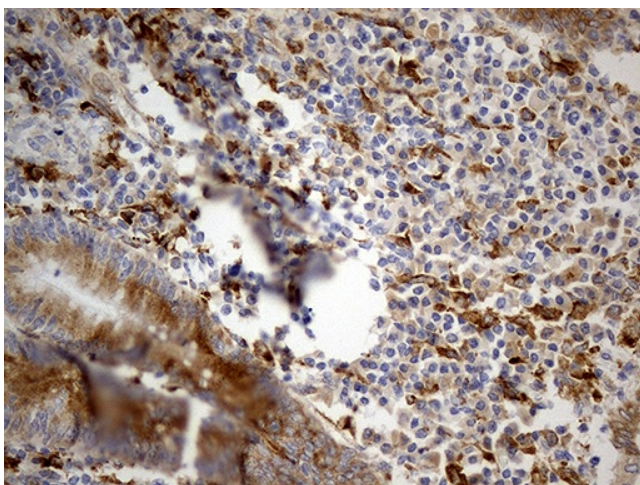
Immunohistochemical staining of paraffin-embedded Human pancreas tissue within the normal limits using anti-GRN mouse monoclonal antibody. Heat-induced epitope retrieval by EDTA solution buffer pH 8.0 at 120°C for 3 min.



Immunohistochemical staining of paraffin-embedded Human endometrium tissue within the normal limits using anti-GRN mouse monoclonal antibody. Heat-induced epitope retrieval by EDTA solution buffer pH 8.0 at 120°C for 3 min.



Immunohistochemical staining of paraffin-embedded Human spleen tissue within the normal limits using anti-GRN mouse monoclonal antibody. Heat-induced epitope retrieval by EDTA solution buffer pH 8.0 at 120°C for 3 min.



Immunohistochemical staining of paraffin-embedded Human appendix tissue within the normal limits using anti-GRN mouse monoclonal antibody. Heat-induced epitope retrieval by EDTA solution buffer pH 8.0 at 120°C for 3 min.