

Product datasheet for **TA807352S**

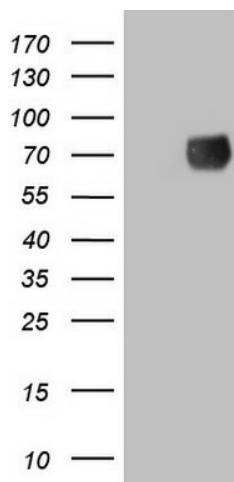
Granulin (GRN) Mouse Monoclonal Antibody [Clone ID: OTI1F9]

Product data:

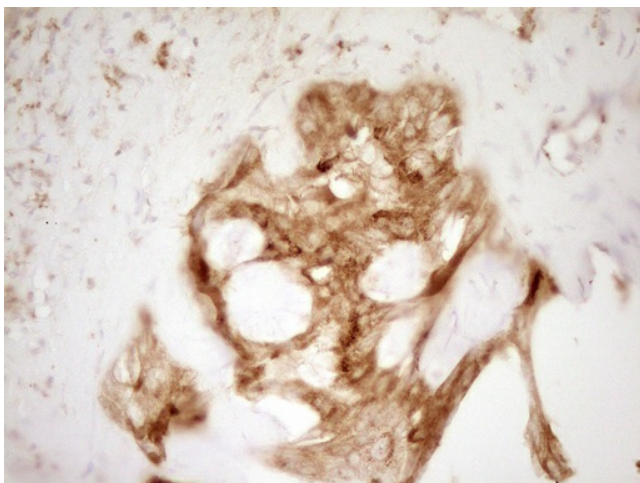
| | |
|-------------------------|---|
| Product Type: | Primary Antibodies |
| Clone Name: | OTI1F9 |
| Applications: | IHC, WB |
| Recommended Dilution: | WB 1:2000, IHC 1:150 |
| Reactivity: | Human |
| Host: | Mouse |
| Isotype: | IgG1 |
| Clonality: | Monoclonal |
| Immunogen: | Human recombinant protein fragment corresponding to amino acids 327-593 of human GRN(NP_002078) produced in E.coli. |
| Formulation: | PBS (pH 7.3) containing 1% BSA, 50% glycerol and 0.02% sodium azide. |
| Concentration: | 1 mg/ml |
| Purification: | Purified from mouse ascites fluids or tissue culture supernatant by affinity chromatography (protein A/G) |
| Conjugation: | Unconjugated |
| Storage: | Store at -20°C as received. |
| Stability: | Stable for 12 months from date of receipt. |
| Predicted Protein Size: | 61.7 kDa |
| Gene Name: | granulin |
| Database Link: | NP_002078 Entrez Gene 2896 Human P28799 |
| Synonyms: | CLN11; GEP; GP88; PCDGF; PEPI; PGRN |
| Protein Families: | Druggable Genome, Secreted Protein |



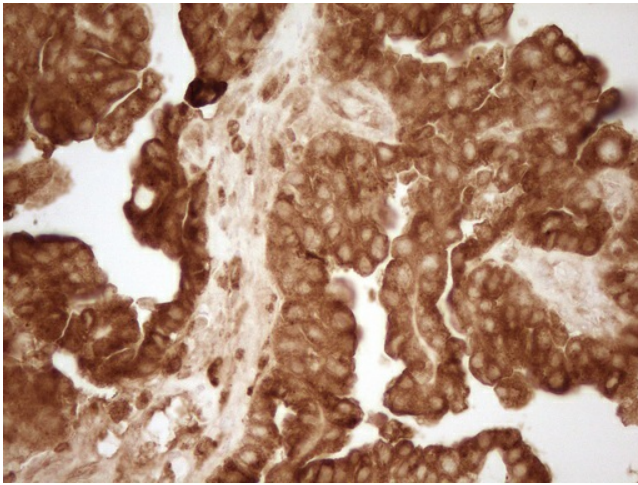
[View online »](#)

Product images:

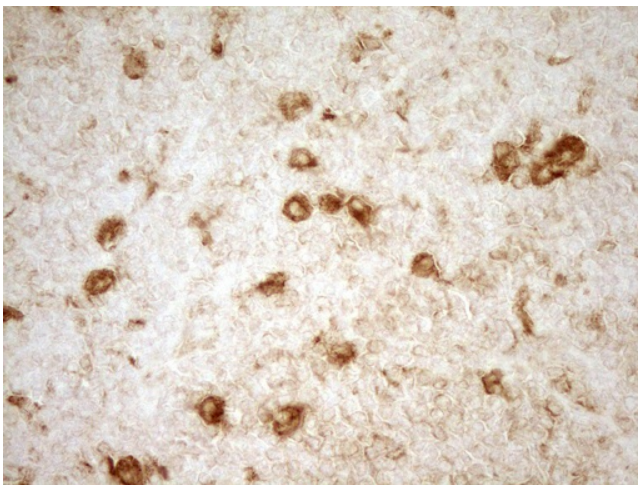
HEK293T cells were transfected with the pCMV6-ENTRY control (Left lane) or pCMV6-ENTRY GRN ([RC202139], Right lane) cDNA for 48 hrs and lysed. Equivalent amounts of cell lysates (5 ug per lane) were separated by SDS-PAGE and immunoblotted with anti-GRN. Positive lysates [LY419545] (100ug) and [LC419545] (20ug) can be purchased separately from OriGene.



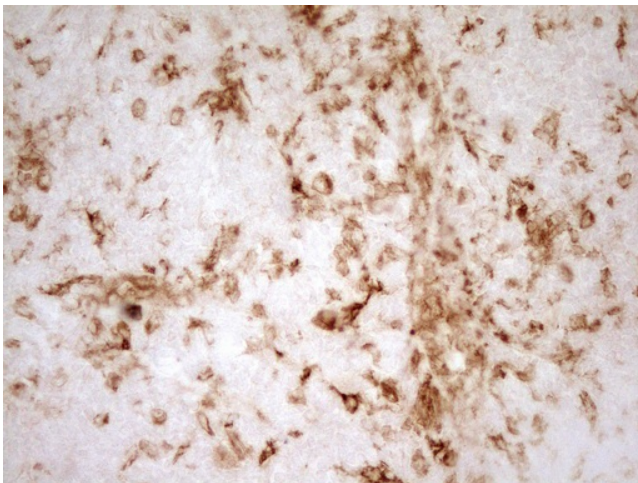
Immunohistochemical staining of paraffin-embedded Carcinoma of Human liver tissue using anti-GRN mouse monoclonal antibody. (Heat-induced epitope retrieval by 1mM EDTA in 10mM Tris, pH8.5, 120°C for 3min, [TA807352])



Immunohistochemical staining of paraffin-embedded Adenocarcinoma of Human ovary tissue using anti-GRN mouse monoclonal antibody. (Heat-induced epitope retrieval by 1mM EDTA in 10mM Tris, pH8.5, 120°C for 3min, [TA807352])



Immunohistochemical staining of paraffin-embedded Human lymphoma tissue using anti-GRN mouse monoclonal antibody. (Heat-induced epitope retrieval by 1mM EDTA in 10mM Tris, pH8.5, 120°C for 3min, [TA807352])



Immunohistochemical staining of paraffin-embedded Human tonsil within the normal limits using anti-GRN mouse monoclonal antibody. (Heat-induced epitope retrieval by 1mM EDTA in 10mM Tris, pH8.5, 120°C for 3min, [TA807352])