

Product datasheet for **TA807348S**

PR3 (PRTN3) Mouse Monoclonal Antibody [Clone ID: OTI9C2]

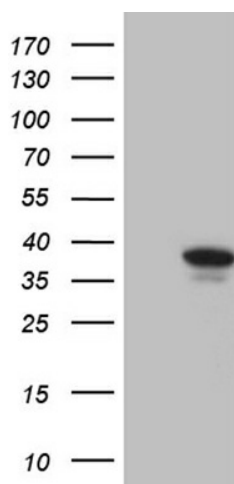
Product data:

Product Type:	Primary Antibodies
Clone Name:	OTI9C2
Applications:	IHC, WB
Recommended Dilution:	WB 1:500, IHC 1:2000
Reactivity:	Human
Host:	Mouse
Isotype:	IgG2a
Clonality:	Monoclonal
Immunogen:	Human recombinant protein fragment corresponding to amino acids 28-248 of human PRTN3(NP_002768) produced in E.coli.
Formulation:	PBS (pH 7.3) containing 1% BSA, 50% glycerol and 0.02% sodium azide.
Concentration:	1 mg/ml
Purification:	Purified from mouse ascites fluids or tissue culture supernatant by affinity chromatography (protein A/G)
Conjugation:	Unconjugated
Storage:	Store at -20°C as received.
Stability:	Stable for 12 months from date of receipt.
Predicted Protein Size:	27.6 kDa
Gene Name:	proteinase 3
Database Link:	NP_002768 Entrez Gene 5657 Human P24158
Background:	Hydrolysis of proteins, including elastin, by preferential cleavage: -Ala- -Xaa- > -Val- -Xaa-. [UniProtKB/Swiss-Prot Function]
Synonyms:	ACPA; AGP7; C-ANCA; CANCA; MBN; MBT; NP-4; NP4; P29; PR-3; PR3
Protein Families:	Druggable Genome, Protease

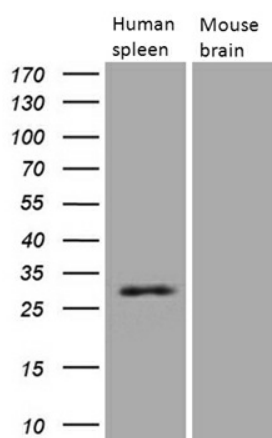


[View online »](#)

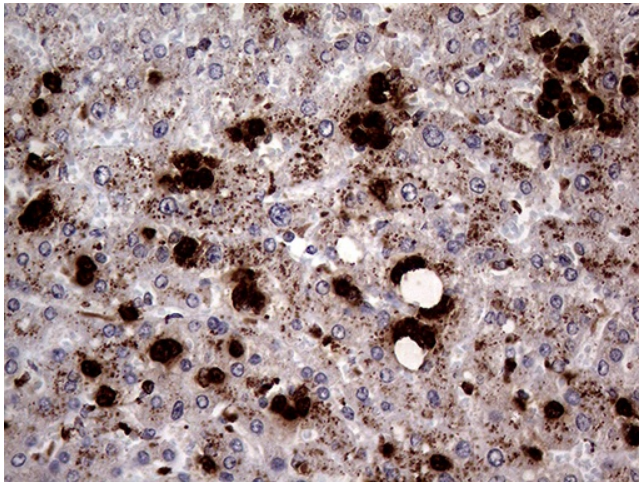
Product images:



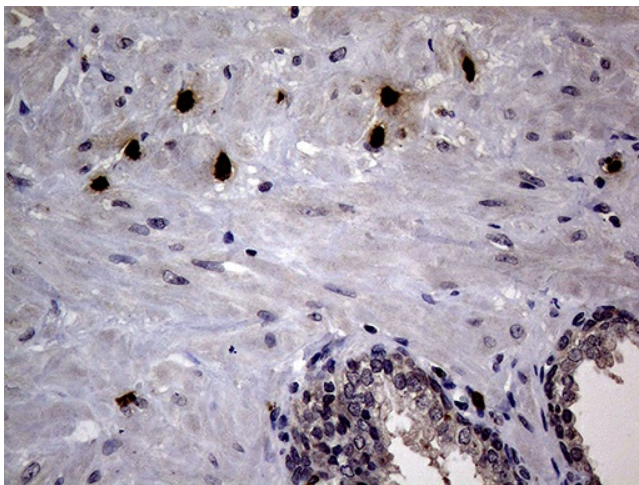
HEK293T cells were transfected with the pCMV6-ENTRY control (Cat# [PS100001], Left lane) or pCMV6-ENTRY PRTN3 (Cat# [RC220949], Right lane) cDNA for 48 hrs and lysed. Equivalent amounts of cell lysates (5 ug per lane) were separated by SDS-PAGE and immunoblotted with anti-PRTN3 (Cat# [TA807348])(1:500). Positive lysates [LY400985] (100ug) and [LC400985] (20ug) can be purchased separately from OriGene.



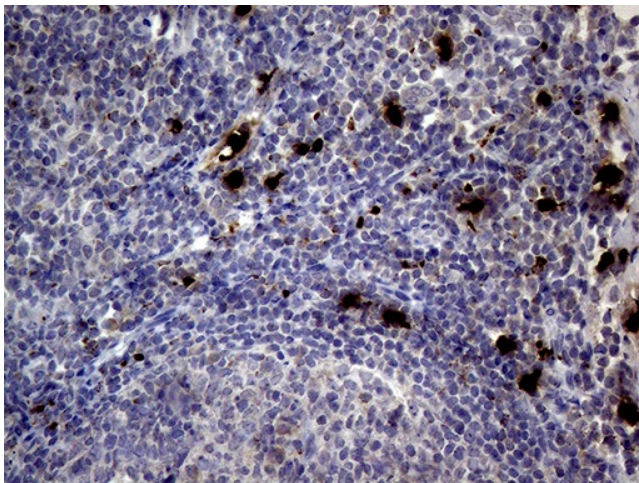
Western blot analysis of extracts (15ug) from human spleen tissue lysate and mouse brain tissue lysate by using anti-PRTN3 monoclonal antibody (1:500).



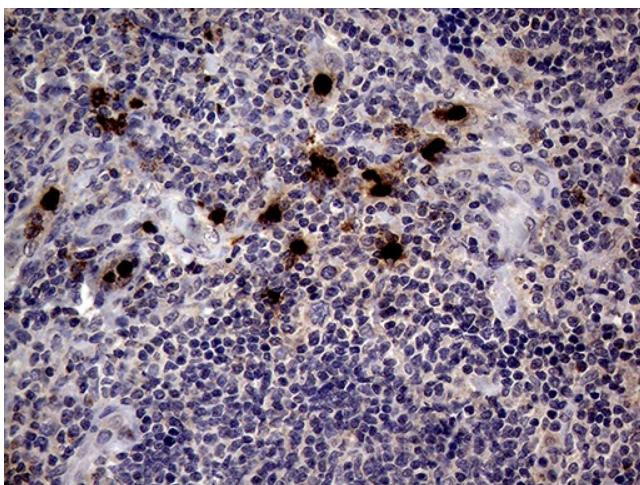
Immunohistochemical staining of paraffin-embedded Carcinoma of Human liver tissue using anti-PRTN3 mouse monoclonal antibody. (Heat-induced epitope retrieval by 1mM EDTA in 10mM Tris buffer (pH8.5) at 120°C for 3min, [TA807348]) (1:2000)



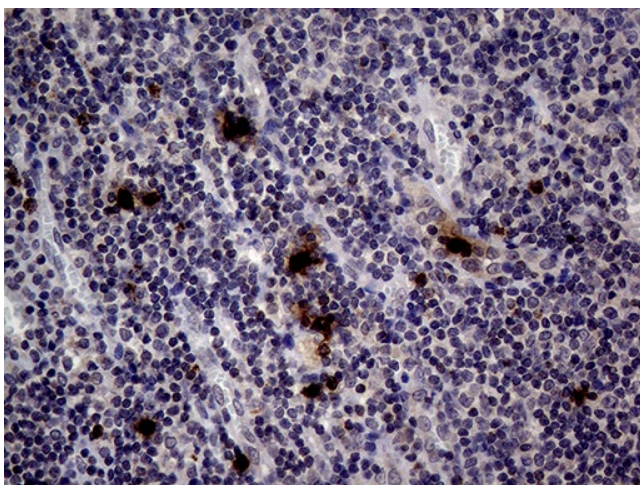
Immunohistochemical staining of paraffin-embedded Human prostate tissue within the normal limits using anti-PRTN3 mouse monoclonal antibody. (Heat-induced epitope retrieval by 1mM EDTA in 10mM Tris buffer (pH8.5) at 120°C for 3min, [TA807348]) (1:2000)



Immunohistochemical staining of paraffin-embedded Human lymph node tissue within the normal limits using anti-PRTN3 mouse monoclonal antibody. (Heat-induced epitope retrieval by 1mM EDTA in 10mM Tris buffer (pH8.5) at 120°C for 3min, [TA807348]) (1:2000)



Immunohistochemical staining of paraffin-embedded Human lymphoma tissue using anti-PRTN3 mouse monoclonal antibody. (Heat-induced epitope retrieval by 1mM EDTA in 10mM Tris buffer (pH8.5) at 120°C for 3min, [TA807348]) (1:2000)



Immunohistochemical staining of paraffin-embedded Human tonsil within the normal limits using anti-PRTN3 mouse monoclonal antibody. (Heat-induced epitope retrieval by 1mM EDTA in 10mM Tris buffer (pH8.5) at 120°C for 3min, [TA807348]) (1:2000)