

Product datasheet for **TA807346M**

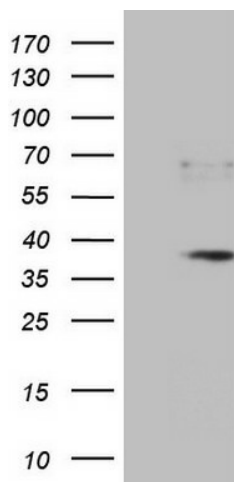
PR3 (PRTN3) Mouse Monoclonal Antibody [Clone ID: OTI6A10]

Product data:

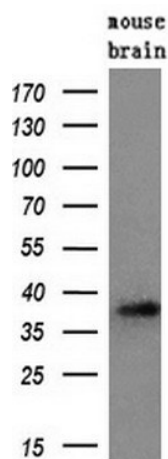
Product Type:	Primary Antibodies
Clone Name:	OTI6A10
Applications:	WB
Recommended Dilution:	WB 1:2000
Reactivity:	Human
Host:	Mouse
Isotype:	IgG2b
Clonality:	Monoclonal
Immunogen:	Human recombinant protein fragment corresponding to amino acids 28-248 of human PRTN3(NP_002768) produced in E.coli.
Formulation:	PBS (pH 7.3) containing 1% BSA, 50% glycerol and 0.02% sodium azide.
Concentration:	1 mg/ml
Purification:	Purified from mouse ascites fluids or tissue culture supernatant by affinity chromatography (protein A/G)
Conjugation:	Unconjugated
Storage:	Store at -20°C as received.
Stability:	Stable for 12 months from date of receipt.
Predicted Protein Size:	27.6 kDa
Gene Name:	proteinase 3
Database Link:	NP_002768 Entrez Gene 5657 Human P24158
Synonyms:	ACPA; AGP7; C-ANCA; CANCA; MBN; MBT; NP-4; NP4; P29; PR-3; PR3
Protein Families:	Druggable Genome, Protease

[View online »](#)

Product images:



HEK293T cells were transfected with the pCMV6-ENTRY control (Left lane) or pCMV6-ENTRY PRTN3 ([RC220949], Right lane) cDNA for 48 hrs and lysed. Equivalent amounts of cell lysates (5 ug per lane) were separated by SDS-PAGE and immunoblotted with anti-PRTN3. Positive lysates [LY400985] (100ug) and [LC400985] (20ug) can be purchased separately from OriGene.



Western blot analysis of extracts (10ug) from a mouse tissue by using anti-PRTN3 monoclonal antibody (1:200).