

Product datasheet for **TA807340AM**

PDX1 Mouse Monoclonal Antibody (Biotin conjugated) [Clone ID: OTI4D8]

Product data:

| | |
|-------------------------|---|
| Product Type: | Primary Antibodies |
| Clone Name: | OTI4D8 |
| Applications: | WB |
| Recommended Dilution: | WB 1:2000 |
| Reactivity: | Human, Mouse, Rat |
| Host: | Mouse |
| Isotype: | IgG1 |
| Clonality: | Monoclonal |
| Immunogen: | Full length human recombinant protein of human PDX1 (NP_000200) produced in E.coli. |
| Formulation: | PBS (pH 7.3) containing 1% BSA, 50% glycerol and 0.02% sodium azide. |
| Concentration: | 0.5 mg/ml |
| Purification: | Purified from mouse ascites fluids or tissue culture supernatant by affinity chromatography (protein A/G) |
| Conjugation: | Biotin |
| Storage: | Store at -20°C as received. |
| Stability: | Stable for 12 months from date of receipt. |
| Predicted Protein Size: | 30.6 kDa |
| Gene Name: | pancreatic and duodenal homeobox 1 |
| Database Link: | NP_000200 Entrez Gene 18609 Mouse Entrez Gene 29535 Rat Entrez Gene 3651 Human P52945 |
| Background: | The protein encoded by this gene is a transcriptional activator of several genes, including insulin, somatostatin, glucokinase, islet amyloid polypeptide, and glucose transporter type 2. The encoded nuclear protein is involved in the early development of the pancreas and plays a major role in glucose-dependent regulation of insulin gene expression. Defects in this gene are a cause of pancreatic agenesis, which can lead to early-onset insulin-dependent diabetes mellitus (NIDDM), as well as maturity onset diabetes of the young type 4 (MODY4). [provided by RefSeq, Jul 2008] |



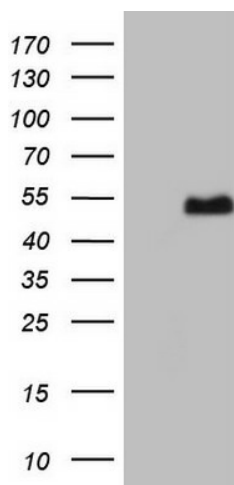
[View online »](#)

Synonyms: GSF; IDX-1; IPF1; IUF1; MODY4; PAGEN1; PDX-1; STF-1

Protein Families: Embryonic stem cells, ES Cell Differentiation/IPS, Induced pluripotent stem cells, Transcription Factors

Protein Pathways: Maturity onset diabetes of the young, Type II diabetes mellitus

Product images:



HEK293T cells were transfected with the pCMV6-ENTRY control (Left lane) or pCMV6-ENTRY PDX1 ([RC222354], Right lane) cDNA for 48 hrs and lysed. Equivalent amounts of cell lysates (5 ug per lane) were separated by SDS-PAGE and immunoblotted with anti-PDX1. Positive lysates [LY400074] (100ug) and [LC400074] (20ug) can be purchased separately from OriGene.