

Product datasheet for **TA807331M**

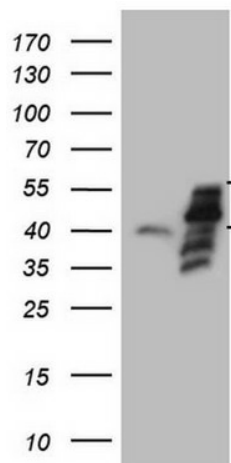
PISD Mouse Monoclonal Antibody [Clone ID: OTI2H1]

Product data:

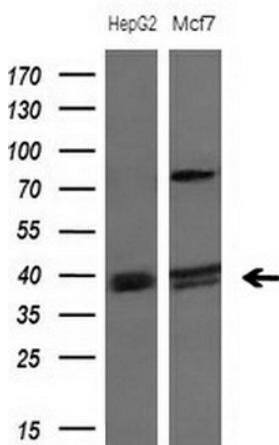
| | |
|-----------------------|---|
| Product Type: | Primary Antibodies |
| Clone Name: | OTI2H1 |
| Applications: | WB |
| Recommended Dilution: | WB 1:200~2000 |
| Reactivity: | Human, Mouse, Rat |
| Host: | Mouse |
| Isotype: | IgG2a |
| Clonality: | Monoclonal |
| Immunogen: | Human recombinant protein fragment corresponding to amino acids 80-340 of human PISD(NP_055153) produced in E.coli. |
| Formulation: | PBS (pH 7.3) containing 1% BSA, 50% glycerol and 0.02% sodium azide. |
| Concentration: | 1 mg/ml |
| Purification: | Purified from mouse ascites fluids or tissue culture supernatant by affinity chromatography (protein A/G) |
| Conjugation: | Unconjugated |
| Storage: | Store at -20°C as received. |
| Stability: | Stable for 12 months from date of receipt. |
| Gene Name: | phosphatidylserine decarboxylase |
| Database Link: | NP_055153 Entrez Gene 320951 MouseEntrez Gene 681361 RatEntrez Gene 23761 Human Q9UG56 |
| Synonyms: | DJ858B16; dj858B16.2; PSD; PSDC; PSSC |
| Protein Pathways: | Glycerophospholipid metabolism, Metabolic pathways |


[View online »](#)

Product images:



HEK293T cells were transfected with the pCMV6-ENTRY control (Left lane) or pCMV6-ENTRY PISD ([RC200269], Right lane) cDNA for 48 hrs and lysed. Equivalent amounts of cell lysates (5 ug per lane) were separated by SDS-PAGE and immunoblotted with anti-PISD.



Western blot analysis of extracts (10ug) from 2 different cell lines by using anti-PISD monoclonal antibody at 1:200 dilution.